



Society of the Sacred Heart
United States – Canada

2014-2015 • Mission Advancement Report

Hearts on Fire

Embracing the Future with Hope





Sisters Sharon Karam, Kathleen Hughes, Barbara Quinn and Carolyn Osiek, coordinators of the *Hearts on Fire II Retreat* for eighty-five RSCJ at the Pallottine Retreat Center in Florissant, Missouri in July. Design by Regina Shin, RSCJ.



Sister Mary Charlotte Chandler, chair of the *Prayer and Dialogue* weekends, and Sister Fran de la Chapelle, facilitator.



The Bicentennial Committee: front row: Sisters Jan Dunn, Donna Collins, Maureen Glavin, Regina Shin; back row: Therese Meyerhoff, Michael Pera, Pamela Schaeffer, Sisters Kathleen Hughes (chair of the committee), Catherine Howard (by Skype), Sheila Hammond and Carol Haggarty.

Religious of the Sacred Heart Embrace the Future with Hope

by Therese Fink Meyerhoff, director of communications, public relations and technology

What are you doing in 2018? The members of the Bicentennial Committee, which began its mandate in the past year, already have their calendars marked! The committee – made up of Religious of the Sacred Heart, Associates, alumnae and staff – has begun planning the events of 2017-18 celebrating the 200th anniversary of Saint Rose Philippine Duchesne and her four companions' establishment of the Society of the Sacred Heart in North America. This anniversary is significant for many reasons, including the beginning of internationality in the Society, the first Sacred Heart school outside Europe and the first Catholic school in St. Louis (preceding even the archdiocese!).

The upcoming bicentennial is a clear illustration of how the United States-Canada Province is fulfilling the words of our Holy Father Pope Francis when he declared the Year of Consecrated Life: "Look to the past with gratitude, live the present with passion, and embrace the future with hope." There were so many important events and celebrations in the past year; we are truly living with passion and creating a future full of hope – always with much gratitude for the religious who came before us and the generosity of our supporters.

Of foremost significance for the future of the Society was the July 15-19 assembly and chapter in St. Louis, *Women of the Heart, Missioned for the Emerging Future*. More than two hundred Religious of the Sacred Heart and some special

guests gathered to review the work done in the province since the last assembly in July 2012 and discuss our shared future. The final two days were devoted to preparing as a body for the Society's international general chapter in 2016. In addition to choosing delegates for this important meeting of the whole Society, the RSCJ of the United States-Canada Province discussed what we will bring to the General Chapter as priorities. We will continue the work of the chapter in additional meetings later this fall.

Immediately prior to the assembly/chapter, eighty-five Religious of the Sacred Heart participated in an eight-day silent retreat. Named *Hearts on Fire II*, it was modeled on an earlier retreat in 1995. The retreat featured a theme for each day taken from a recent internal Society publication, *Life Unfolding: Offering the Gift*. The rhythm of the days included communal prayer of different forms and a conference in the morning, followed by substantial periods of silence. Participants celebrated the Eucharist most days and had opportunities for the sacrament of reconciliation, Eucharistic adoration and daily faith sharing. The conferences were presented by Sisters Kathleen Hughes, Barb Quinn, Sharon Karam and Carolyn Osiek, as well as long-time Sacred Heart educators Lisa Tebbe and John Winston Powell, who spoke about being part of the Ferguson, Missouri community and what that has meant in the past year. It was a most profound experience to have so many RSCJ praying in the same space

over a span of eight days. The RSCJ who participated in *Hearts on Fire* arrived at the assembly/chapter with a strong sense of *Cor Unum* and a shared commitment to creating a future in the style of Saint Madeleine Sophie.

One of the highlights of our spring was welcoming Superior General Kathleen Conan and General Council Member Catherine Lloyd for an official visit to our province. Sisters Conan and Lloyd earned some frequent-flyer miles as they travelled around the province over the course of about five weeks, making stops in St. Louis and St. Charles; San Francisco and Atherton; Grand Coteau and New Orleans; Boston, New York, Albany and Halifax. The Society's *Constitutions* require an official visit to every province during each superior general's eight-year term. These visits offer an opportunity to assess the life and the vitality of each province. For Sister Conan, who is a member of this province and a former provincial of the United States Province, it was also an opportunity to renew friendships.

Last fall, more than half the members of the United States-Canada Province met for *Prayer and Dialogue* weekends. Held in five locations around our province, each



Outgoing AMASC President Pamela Snyder from the United States with the new AMASC President Marisa Moreno de Malcher from Mexico.



The hard-working planning committee for the provincial assembly/chapter: Sisters Mary Ann Bates, Chair Carol Haggarty, Regina Shin, Anne-Marie Conn, Mary Hotz, Mary Finlayson and our facilitator, Pat Kozak, CSJ.



Ian Humphreys, program director for the Network of Sacred Heart Schools, and Suzanne Cooke, RSCJ, head of the new Conference of Sacred Heart Education.

gathering included time for prayer and quiet, sharing in small and large groups and leisure time together. Participants found the weekends to be sources of energy, hope and peace.

Our meetings of the past year included two with alumnae/i of the Sacred Heart. Last November, alumnae and alumni of Sacred Heart schools around the world gathered for the **AMASC Congress** in Scottsdale, Arizona, for a conference with the theme of *Listening with One Heart*. AMASC – *Association Mondiale des Anciennes et Anciens du Sacré Coeur* (World Association of Alumnae and Alumni of the Sacred Heart) – is the organization that unites tens of thousands of alumnae and alumni as part of an international family. In addition to attending to the business of the organization, participants heard from Religious of the Sacred

Heart Kathleen Conan, Barbara Dawson and Kathleen Hughes. Sisters Anne-Marie Conn, Maria Cimperman and Melanie Guste led a panel discussion on healthy water and Sister Reyna Gonzalez introduced the *My Call Me Back* app. They also announced the theme for the coming four years: *The legacy of Saint Madeleine Sophie: a gift for the world*. Pam Snyder, president of AMASC for the past four years, and her team handed the gavel over to Marisa Moreno de Malcher, who will serve as president of AMASC for the next four years. The next congress will be held in Mexico in 2018.

In April, the **Associated Alumnae and Alumni of Sacred Heart** (AASH) celebrated *Cor Unum* in Boston. Three hundred alumnae/i celebrated the theme, *Philanthropy from the Heart*, and enjoyed a morning at Newton Country Day School. AASH



AASH President Mary Forsyth joined RSCJ at the provincial assembly.



Flag bearers for the opening liturgy for the AMASC conference in Scottsdale in November.



Sisters Lucy Hayes and Helen Rosenthal enjoy a moment at the *Hearts on Fire II* retreat prior to the provincial assembly.

President Alice Burns and her team turned the leadership over to a new board, led by President Mary Forsyth.

The “Cohort Group” of RSCJ who were in initial formation in the past thirty years or so met again this past spring. Numbering around forty people, “we are strengthening our bonds for our future.” Our next meeting will be in the spring of 2016.

Nearly two years ago, the member schools of the Network of Sacred Heart Schools approved a new model of organization; this August, the new model became a reality. **The Conference of Sacred Heart Education** represents a new vision for the schools’ relationship with province leadership and with one another. Suzanne Cooke, RSCJ, will oversee the relationship between the Network schools and the United States-Canada Province,

communicating the Society’s priorities to the heads, chairs and trustees while updating the provincial leadership team on issues facing the schools, particularly in the areas of governance, accountability for mission, and formation to mission. Ian Humphreys is the new program director for the Network of Sacred Heart Schools. His primary responsibility is to ensure effective programming for Network students and faculty/staff.

Administratively, the provincial team and staff created a *Plan for Mission and Life* for the years 2015-17. The plan is intended to help the province live into this period of change as we continue to evolve from two provinces into one. Grounded in the Gospel, our *Constitutions* and the 2008 Chapter documents, the plan names our highest priorities, along with a number of possible pathways to

realize these goals. It covers everything from expanding ways to share our spirituality and addressing issues of justice, peace and integrity of creation to structural reorganization and finance at the service of mission.

So many signs of hope for our shared future! Foremost among them is the recent entrance of a new candidate! Please join us in praying that this young woman, who will live with one of our communities in Chicago, can discern fully and joyfully God’s call to her. In addition, in the past year we celebrated the opening of a novitiate in Halifax, where our novice, Uchenna Oluoha, lives with several RSCJ. Our international house of studies in Chicago has become a short-term home for several of our sisters from other provinces. And Sophia House, which opened last year in Berkeley, has welcomed numerous young people, sharing our lives and our spirituality with them.

Please share our joy in these exciting developments, as we could not be where we are without you. So much of the work of the past year has been a matter of living the present with passion and with a hopeful embrace of the future.

August 31, 2015

Dear Family and Friends in the Sacred Heart family,

Every day throughout this past year thoughts of you have been present in the minds and hearts of the Religious of the Sacred Heart in the United States-Canada Province. Each day you are remembered especially in the prayers of our sisters in Albany, at Oakwood and at Caritas who have as their ministry to pray for you and for all of us. Your support for the mission and ministry of the Society of the Sacred Heart in North America and beyond allows us, with our colleagues and friends, to listen to and follow the Holy Spirit *revealing the God's love in the heart of the world.*

During this summer of 2015, the province was happy to celebrate the first provincial assembly and chapter as the United States-Canada Province. More than 230 RSCJ and representatives of our associates and lay colleagues gathered in St. Charles, the home of our missionary saint, Philippine Duchesne. Our theme – *Women of the Heart: Missioned for the Emerging Future* – called us to stretch our hearts as together we prayed, discerned, thought and planned for our emerging future. The purpose of an assembly is to build our *Cor Unum* and we did this with great enthusiasm, sharing our experience, connecting with each other, praying together, challenging ourselves to be who God is calling us to be today and into the future.

During an assembly, we have the opportunity to celebrate how God is acting within our midst. Thanks to your support, we were privileged to have RSCJ sisters among us from Latin America, Asia and Africa, who are studying in the United States and Canada. We celebrated our new vocation house in

Berkeley, Sophia House, and welcomed our novice and new candidate who joined us in August. We heard the commitment of women and men who are our associates and were awestruck by their commitment to our spirituality and mission. We learned about the new Conference of Sacred Heart Education which will lead our Network schools into the future, and shared the excitement of new leadership opportunities for young people who share our passion for justice, peace and integrity of creation. Together we prayed over the call from Pope Francis to love and respect our planet Earth and all God's beloved people who share this Earth as home.

The community of the Sacred Heart welcomes you to share with us as we continue to listen to God's call and respond as Women of the Heart to the emerging future of God's people and God's beloved Earth.

As always, we pray in gratitude for your faithfulness to the Society of the Sacred Heart and its mission.



With love and prayer,

Barbara Dawson RSCJ

Barbara Dawson, RSCJ

Provincial

United States-Canada Province

August 31, 2015

Dear Friends,

We come to you, our friends and benefactors, to thank you once again for all you do to enable the Religious of the Sacred Heart to “look to the past with gratitude, live the present with passion, and embrace the future with hope.” These words of Pope Francis as he opened the Year of Consecrated Life are words of encouragement and challenge for us, in the midst of world crises everywhere, as we plan for ways we might strengthen our mission in the United States-Canada Province, as well as in the 41 countries in the world where we serve, and thus, deepen our charism of “*making God’s love known in the heart of the world.*”

This has been a year of unprecedented gatherings and movement forward: most of the Society’s 300 members of the USC Province attended one of five *Prayer and Dialogue* weekends held throughout the country to pray together and to listen to the Holy Spirit and one another about how the life of the Society is unfolding. Along with alumnae and alumni from around the world, we celebrated the AMASC conference in Scottsdale in November, and the AASH conference in Boston in April. Our sisters 65 and under gathered together twice to strengthen their bonds and to discern the future. A bicentennial committee, chaired by Kathleen Hughes, RSCJ, was appointed by the provincial team, and plans are well underway to celebrate the 200th anniversary of the arrival of Philippine Duchesne and her four RSCJ companions on the banks of the Mississippi in 1818. The new Conference of Sacred Heart Education has been launched with Suzanne Cooke, RSCJ, as director. Two members of the Society’s General Council in Rome, Superior General Kathleen Conan and Sister Catherine Lloyd, made an official visit to our province this spring and met with groups of RSCJ and lay colleagues

throughout the country. Our new Caritas retirement community opened in Halifax. Eighty-five RSCJ gathered in Florissant, Missouri in July for eight days of prayer during the *Hearts on Fire* retreat. The retreat was followed by our provincial assembly and chapter in St. Charles with 230 RSCJ and lay colleagues in attendance.

All of these events and gatherings have strengthened our *Cor Unum* with one another and with the greater Sacred Heart family. We could not be “embracing the future with hope” in the way we are if you had not encouraged us by your love, faith, hope and generosity. We will always be grateful. We keep our eyes fixed on Jesus and on our saints as they inspire us to be courageous in our decisions, faithful in our relationships, steadfast in our prayer, and wholehearted in our commitment to mission.

This mission advancement report is a compilation of events and gatherings from this past year which you have helped make possible. Thank you!



Count on my prayer always for you.

A handwritten signature in black ink that reads "Shirley Miller, RSCJ". The signature is written in a cursive, flowing style.

Shirley Miller, RSCJ

Director of Mission Advancement



Cor Unum Legacy Society

The *Cor Unum Legacy Society* was introduced in the spring of 2009. The following are those who have remembered the Society of the Sacred Heart in their estate planning; the listing includes all realized bequests received by Kenwood, Oakwood, and the province since 2002 and all those who have expressed in writing their intentions to remember the Society in the future. ♦ If you would like to join the *Cor Unum Legacy Society*, please contact Shirley Miller, RSCJ, smiller@rscj.org or 314-652-1500.

Cor unum et anima una in Corde Jesu (one heart and

♦ *Cor Unum Legacy Society*

† *deceased*

Lucy Henry Abernathy
 †Mary Lou Adams
 Maureen Aggeler
 Victoria Taylor Allen
 Monica B. Armstrong & Donald J. Kapa
 †Katherine L. Atkinson
 †Gertrude Attridge
 Patricia Ann Avery
 †Margaret Smith Barnell
 †Emile Barsch
 David E. and †Meryl Louis Berlew
 Anonymous
 Marion Blanchard
 †Mary Louise Gent Blosser
 †Jean W. Bone
 Linda E. Bradford
 †Edna M. Brennan
 †Paul S. and Eileen O'Reilly Brescia Trust
 Maudie Bremer
 Mary Ann Bridge
 †Virginia Alders Briner
 Patricia A. and Richard C. Browne
 †Jeanne K. Burchell
 Marianna McIntyre Burke
 Dorothy Towers Burns
 †Mary T. Burns
 †Josephine F. Burtschi
 †Grace Butler
 †Annchen Kliegl Byrne
 Brenda Byrne

†Leontine Keane Cadieux
 †Callero Trust
 Jane Shields Campbell
 †Robert W. Campbell
 †Mary Louise Canfield
 †Ligeia Gallagher Cannon
 †Elizabeth A. Casey
 †Ann Cortis Chapman
 Richard L. Chenault
 Anonymous
 Patricia Clapp
 Betty J. Clemen
 †Alice Lida Cochran
 Mary M. Cochrane
 †Virginia Yates Connolly
 †Wilma Cooksey
 Mary Kay Cooley
 †Elizabeth Ann Cooney
 †Elizabeth Sheehan Cronan
 †Mildred Crowley
 Jean Fox Csaposs
 Connie Cumiskey
 †Harry J. Curry
 Louise M. Dagit
 Jane Vollbrecht Dall
 †Margaret M. Davies
 †Dorothy S. Davis
 †Helen Dawson
 †Jessica Stocking DeMay
 Sarah E. Dembinski
 †Bonnie Dewes
 †Rita M. Dineen

Anita Hennessy DiSomma
 †Catherine Dolan
 Barbara Finlay Donahue
 Emily C. Donahue
 Constance Burdzy Donius
 †Mary Virginia Donnelly
 †Mary J. Dowd
 Diane M. Duacsek
 †Margaret Mary Duff
 Judith F. Duffy
 Catherine B. Eardley-Murphy
 Sarita and Brent Eastman
 Edouard and Mary Quigley Eller
 Patricia C. Ellingwood
 †Charlotte Euwer
 Nancy Fahey
 †Robert Fanning
 †Mary Kay Farley
 Mortimer † and Kay Favrot
 Florence Fee
 Catherine S. Felleman
 †Anita Figueredo
 †Mary V. Fisher
 Harry Chapman and
 Elisabeth Flynn-Chapman
 †Mary Louise Keane Forcade
 A. Sylvia Francis
 †Dorothea Wanner Frech
 Ana M. Freyre de Azqueta
 Grace Frontin
 †M. Patricia Gallagher
 Ofelia Garcia
 Christine M. Garner

one mind in the heart of Jesus)

†Madeleine S. Gary
 Gail Gavello
 Mirta N. Geddo
 Mary Lea Kaiser Geesbreght
 Kate Lox Geiger
 Carol Gelderman
 †George W. Saul Trust
 Jane Gerritzen
 Angela Gillespie
 †Katherine E. Golden
 †Clare Haggarty
 †Marion Haggarty
 Louise Tesson Hall
 Virginia M. Hamel
 †Agnes Rutledge Hanford
 †Margaret M. Hannon
 †Beth Hanson
 Aileen Harline
 Marie Hartigan
 †Margaret J. Hayes
 Frances M. Healey
 †Nancy A. Heffernan
 Elaine Ibold Heile
 Jeanette Renner Hemmen
 Carolyn S. Henry
 Heather Campbell Henry
 †Miriam V. Henry
 †Richard G. Hibbs
 Jean Frank Hicks
 †Mary Jo Hogan
 †Diane B. Holt
 Marge Hopkins

†Anna Carroll Horsey
 †Bernice E. Houlihan
 †Ann Howkins
 †Lucy Huger
 †Rosemary D. Hunter
 †Mary C. Hunyady
 Constance Hynes
 †Janet Gallagher Jacobs
 †Catherine V. Janes Trust
 Brooke Janis
 †Eugene and Dorothy Jaroch
 Family Trust
 Marie Louise Grace Joffrin
 †Jones Estate
 †Lillian Jurika
 Julie Kammerer
 †Jasper Kane
 Lucy Kastenbein
 †Lois Mailloux Keeley
 Glenna Keene
 †Marion S. Kellogg
 Jill O'Connor Kelly
 Karen L. Kelly
 Katharine H. Kernan
 Winifred Beam Kessler
 †Eileen Hickey King
 †Louisa B. Kirchner
 Ann B. Kittle
 B.J. Kittredge
 †Lillian E. Kleve
 Alice Roy Kolb
 †Patricia Lambron Coward Kolbe
 †Margaret M. Kostouros

†Jane O'Brien Krigsman
 S. E. Labine
 Missy Lacroix
 Ann Lammers-Lasek
 Irene Lawrence-Conrady
 †Albert Lawson
 Mira and Andrzej Lechowicz
 †Jeanne L. Leahy
 Moira Lees
 †Dorothy Lindberg
 †Lillian H. Link
 Molly Molloy Linnemann
 †Elizabeth Lin Lo
 †Josephine K. Long
 Rosemary Potts Loyacono
 Marilyn Doyle Lynch
 †Edwin & Elinor MacCamy
 Elizabeth A. Madden
 †Mary I. Madden
 †Jane Correa Maggin
 †Donald L. Magnetti
 Sheila Anne Mahony
 Anonymous
 †Deirdre Grogan Mardon
 †Mary Jo Martin
 Woods and Patsy Martin
 †Martinez Family Trust
 Margaret N. Maxey
 †Ginny McCall
 Patricia McCann
 †Kathleen P. McKenna
 Sharron Vavak McKenzie



Sisters Nancy Morris (Atherton, California), Patsy Reiss (Chicago) and Betsy Hartson (Washington, DC) were pleased to have some time together at assembly/chapter this summer.



These RSCJ formed a bond years ago when they spent six months together before making their final professions: left to right: Sisters Josephine Wright, Alette Latore, Lucie Nordmann, Mary Lyman and Ann McGowan.



Sisters Connie Dryden and Sheila Hammond both serve in the St. Louis Area.



The staff at the national archives in St. Louis for the Society of the Sacred Heart: Sister Mary Lou Gavan, Sister Carolyn Osiek, director of the archives, and Michael Pera.

Family of †Jane McKinley RSCJ
 †Cyr McMillan
 McMorrow Family
 Margaret McRaith
 Rose Merino
 †Beverly Merrill Trust
 Ellen S. Miller
 Jean Miller
 John and Teresa Molbeck
 †Mary Elizabeth C. Moloney
 †Gregoria Monterroso
 †Alice Montgomery
 Helen Healy Moorhead
 †Donald E. Morris
 †Helen J. Morris
 Carolyn Moynihan
 Virginia Murillo
 †Margaret E. Murphy
 Laurette Marcotte Naylor
 Lynne and Harold Neitzschman
 Paul and Kate Nelson
 †John & Catherine Neveling Trust
 †Jane K. Newton
 Nancy-Elizabeth Nimmich
 Dorothy O'Carroll
 Jeanne O'Brien O'Connor
 Airlie Ogilvie
 †Mary C. O'Gorman
 Doranne Terhune O'Hara-Casto
 Rosario A. Olivares
 †Eva V. Ollis
 †Ralph Neil
 Rosemary O'Neil
 Marie L. Owen
 †Joseph Pawlish
 †Patricia R. Peeler
 †Alice Farley Peppard and Philip Farley

†Virginia W. Perkins
 †Anita Peterson
 Margaret D. Pizzo
 †Bernice Pratt
 Suzanne Price
 Mary Jane Proctor
 †Peggy Lou Prudell
 †Mary Hall Quinlan
 Muriel Rada
 Emily K. Rafferty
 †Louis Ranney
 †Robert and Mildred Reardon
 †John Rebuck
 †Gloria Redmond
 Dana S. Roberson
 Dorothy Rodriguez-Pandaleon
 Marie M. Rogers
 Mary E. Romson
 †Mamie J. Rose Trust
 Irma Rozynski
 Patricia M. Rouchier
 †Elsie Gelpi Rubin Foundation
 Cathleen A. Ryan
 Michael E. and Fran Ryan
 Mary Catherine Ryan
 Hortensia Hacker Sampedro
 Barbara M. Sanders
 †Faye Saul Trust
 Carroll Saussy
 Joanne B. Schelske
 †Mary Lou D. Sheibley
 †Constance Hanley Smith
 Pamela M. Snyder
 Elizabeth Largay St. John
 Rina Stefani
 Elaine S. Stenger
 Judith K. Stoewe

†Merna Stoflet
 Bonnie Walsh Stoloski
 †Andree Strybos
 Constance Heide Sullivan
 †Rose B. Sullivan
 Dolores Supper
 †Jean B. Sweeney
 Harriet Switzer and David Cronin
 Virginia Tarjan
 Joan Terry
 Sandy Theunick
 Bernadette Thibodeau
 Mary Jane Tiernan
 †Anonymous
 Martha Peters Toon
 †Lelia T. Totten Trust
 †Margaret Cambron Tracy Trust
 †Ruth Hogan Tredway
 Diane Remien Tymick
 †Lilian Kapechuk Ulissey
 Dacia Van Antwerp
 †Mary T. Verkamp
 Virginia Vessa-McLaughlin
 †Madeleine VonBargen
 †Olga Warfield
 M. Virginia Waterman-Casey
 †Edward Watson
 Patricia Bernstein Wells
 William and Mimi Welsh
 Susan Whalen
 †John Whitfield, Sr.
 Suzanne D. Wilcox
 Francine Wimsatt
 †Worner Family Trust
 †Loretta Young

With gratitude for the generosity of our donors

The Religious of the Sacred Heart are deeply grateful for each gift to the province, as each gift contributes to the care of our elderly sisters and helps to further our spiritual and educational mission.

Annual Appeal Donors

St. Madeleine Sophie Donor Giving Circle

Estate of Dr. P. Rosemary Peeler

St. Philippine Duchesne Donor Circle

Estate of Mary Virginia Donnelly
Estate of Mary Kay Tracy Farley

Janet Erskine Stuart Donor Circle

Anonymous
Anonymous
Marge and Charles J. Schott Foundation

Aloysia Hardey Donor Circle

David E. and Meryl Louis *RIP* Berlew
Estate of Edna M. Brennan
The Briggs-Fisher Foundation
Considine Family Foundation
Cyril F. and Marie O'Neil Foundation
Mrs. Mary Q. Eller
Mrs. Tim *RIP* (Kay) Favrot
Garnetta Kramer Charitable Foundation
Anonymous
The Hatherly Charitable Fund
Mr. and Mrs. Gregory Kahn
Estate of George P. Keeley
Anonymous
Mr. and Mrs. Stephen J. Luczo

Network of Sacred Heart Schools
Tobin Family

Mater Admirabilis Donor Circle

The Marion and Addison Bartush Fund
Mrs. Doris Bato
Mrs. James E. Heile
Estate of Bernice E. Houlihan
Mr. and Mrs. Robert H. Kim
Anonymous
Mr. and Mrs. John V. McGraw, Jr.
Estate of Helen J. Morris
The Robert S. and Helen P. Odell Fund
Mark O'Neil and Family
Mrs. Bernadette Settlemeyer
Trust Fund Incorporated
C.A. Wall Family Foundation
Mrs. M. Virginia Waterman-Casey

Très Bien Donor Circle

Ms. Maureen Aggeler
Mr. and Mrs. Harry W. Anderson
Mrs. Susan R. Beckman
Mrs. Sally N. Bredemann
Ms. Sheila O. Burns
Ms. Carol Chen and Ms. Patt Chen
Mrs. Taylor S. Desloge, Taylor S. and Marian F. Desloge Fund of the Greater Saint Louis Community Foundation
Mr. and Mrs. David Fambrini
Alumnae/i of the Sacred Heart, Florida Gold Coast

The Glockner Family
Robert Gould Foundation Inc.
Mrs. Cynthia Grubb
Ms. Kathleen E. Hegenbart
Mrs. Laurence J. Hoch
Mrs. Kathryn A. Jehle and Mr. Paul E. Campbell
Mrs. Mary E. Ketchum
Mr. and Mrs. John F. Latu, Jr.
Mrs. Carol H. Luders
885
Ms. Barbara J. Menard
Menard Family Foundation
Mrs. Amy M. Miller
Estate of Donald E. Morris
Mrs. Katherine D. Quigley
Mrs. Anne T. Shapleigh
Estate of Mary Lou Sheibley
Dr. Clare Siu
Speramus Foundation
Mrs. Shawn H. Sweeney
Ms. Patricia A. Wells

Blue Ribbon Donor Circle

1002 Foundation
Mr. and Mrs. Richard W. Abrams
Alumnae/i of the Sacred Heart, Arizona
Alumnae/i of the Sacred Heart, Rosary, New Orleans
Alumnae/i of the Sacred Heart, San Diego



Sisters Agnes Chimbayo, Lisa Buscher and Uchenna Oluoha

Alumnae/i of the Sacred Heart, St. Joseph
Alumnae/i of the Sacred Heart, Treasure Coast
Ms. Rosemary Bannon
Anonymous
Mrs. Ludmila Schwarzenberg Bidwell
Mr. David A. Blanton, III
Mr. and Mrs. Henry J. Blommer
Ms. Nancy M. Bowdring
Mrs. Ursula Brinkmann
Mr. Philip J. Burguières
Ms. Karen Burkhardt
Mrs. Marie T. Carleton
Ms. Sandy Chelle
Mr. Richard L. Chenault
Mr. Joseph Chiccarelli
Children of Mary, St. Louis
Children of Mary, Grosse Pointe
Mrs. Mary Jo S. Colagiovanni
Mrs. Sally C. Coleman

Mr. and Mrs. Kevin W. Cosgrove
Mr. Hartley Cravens and Mrs. Mary Lou Myers
Ms. Danna M. Crowley
Mr. and Mrs. Robert Curley
Mrs. Leonore R. Daschbach
De Porre Family Foundation
Mrs. Rosemary Williams DeMore
Catherine McKeever Denten Foundation
Mrs. George B. Desloge
Mrs. Mary E. Downs
Mrs. Patricia D. Doyle
Ms. Margaret Dufflock
Anonymous
Mrs. Catherine B. Eardley-Murphy
Mr. and Mrs. Alain C. Enthoven
Cong. Anna Eshoo
Mrs. Catherine S. Felleman
Ms. Jennifer E. Finlay
Mrs. Betty Jane Finnerty

Donor Recognition Levels

Sacré Coeur Donor Circle — \$1,000,000+ • St. Madeleine Sophie Donor Circle — \$999,000-500,000 • St. Philippine Duchesne Donor Circle — \$499,000-250,000 • Janet Erskine Stuart Donor Circle — \$249,000-100,000
Aloysia Hardey Donor Circle — \$99,000-25,000 • Mater Admirabilis Donor Circle — \$24,999-10,000 • Très Bien Donor Circle — \$9,999-5,000 • Blue Ribbon Donor Circle — \$4,999-1,000 • Green Ribbon Donor Circle — \$999-1



Sisters Marie-Louise Wolfington, Patricia Munch and Judy Roach celebrated their 60th Jubilees during a liturgy at the Shrine of Saint Rose Philippine Duchesne in St. Charles.



Some of our Canadian sisters: Mary Ann Bates, Anne-Marie Conn, Donna Dolan, Sally McLean and Shelley Lawrence.

Mr. and Mrs. Michael E. Fox, Sr.
 Mrs. Evelyn K. Francuz
 Ms. Grace M. Frontin
 Mrs. Melinda P. Galaher
 Dr. Ofelia Garcia
 Mrs. Sandra P. Gaubert
 Mrs. Patricia M. Gavin
 Mrs. Rita S. Godward
 Mr. and Mrs. Edward V. Hamilton, Jr.
 Mrs. Mary Elizabeth Hotz Hartigan
 Ms. K. Denise Hattler
 Mr. and Mrs. Hugh M. Hayden
 Mr. and Mrs. Isaac Heimbinder
 Ms. Carolyn S. Henry
 Mrs. Heather C. Henry
 Mr. and Mrs. Mark W. Holland
 Mr. John A. Hoormann
 Ms. Patricia Horsley
 Mrs. Barbara B. Hugenberg
 Mr. and Mrs. Author E. Hughes
 Mrs. Catharine C. Hurley
 Mr. and Mrs. Philip Hwang
 Mrs. Joyce James
 Jason Family Foundation
 Ms. Katherine B. Johnson
 Mr. Paul E. Kelly
 Mr. and Mrs. Thomas L. Kelly
 Mr. and Mrs. Michael J. Kelly
 Mrs. Charlotte M. Kent
 Mrs. Ann Key
 Mrs. Dorothy M. King
 Mrs. Constance M. Kinnear
 The Kutch Family Fund of the
 Dallas Foundation
 Mr. and Mrs. Pierre F. Lapeyre, Jr.
 Ms. Kathleen Larson
 Mrs. Madelyn C. Law
 Dr. and Mrs. Lawrence G. Lenke
 Ms. Christine Linnenbach
 Mrs. Evelyn Loh
 Mrs. Carol K. Loser
 The Loyola Foundation, Inc.

Mrs. Sheldon Lykes
 Mr. William J. Lyons, Jr.
 Ms. Mary Leigh Madden
 Malcolm Cravens Foundation
 Kay and John Mallon
 Martha McLoughlin Foundation
 Mr. and Mrs. Woods Martin
 Mrs. Elizabeth J. McCormack
 Mrs. Kathleen M. McDonald
 Mr. and Mrs. Patrick T. McGowan
 Mr. Elbert F. McKinlay
 Ms. Elizabeth McLoughlin
 Dr. Nancy M. McMahan
 Dr. and Mrs. John R. McNeel
 Mrs. Lorraine F. Melton-Bayuk
 Mr. and Mrs. Frank H. Menaker, Jr.
 Ms. Natalie C. Mirkovich
 Mr. and Mrs. John N. Molbeck, Jr.
 Molloy Foundation Inc.
 Mrs. Mary Mongan
 Ms. Elvira C. Monroe
 Mr. and Mrs. Joseph P. Morey, Jr.
 Ms. Anne M. Morris
 Dr. Moyra Siu Moy
 Mrs. Margaret D. Muccia
 Mr. and Mrs. James J. Murphy, Jr.
 Mr. and Mrs. Daniel T. Myers
 Ms. Marcia V. Norris
 Mr. William R. O'Neill *RIP*
 Mrs. Mary F. Orradre
 Mrs. Barbara C. O'Shaughnessy
 Mr. and Mrs. John P. Owen
 Mr. and Mrs. Stanley T. Pardo
 Peninsula Building Materials Company
 Mr. and Mrs. William D. Phelan
 Mr. and Mrs. Richard J. Quinlan
 Dr. Sonya A. Quitslund
 Mr. and Mrs. Michael J. Rapier
 Mrs. Elisabeth A. Rareshide
 Mr. and Mrs. Richard M. Raymond
 Mr. and Mrs. Gates T. Richards
 Jane and Bruce Robert

Mr. and Mrs. Jesse Rogers
 Mrs. Donna Y. Rohne
 Rose Valley Partners
 Mr. and Mrs. Michael E. Ryan
 Mr. and Mrs. Richard M. Sampson
 Mrs. Kathryn F. Schurz
 Mrs. Julie Siderfin
 Mrs. Grace H. Smith
 Mrs. Beth Speck
 Ms. Martha Stanley
 Dr. Judith K. Stoewe
 Mrs. Bonnie W. Stoloski
 Ms. Therese G. Sweeney
 Mrs. Marcia Syufy
 Mr. and Mrs. R. John Thro
 Mrs. Linda F. Vartanian
 Mr. Richard Vlerick
 Mr. and Mrs. Michael Voldstad
 Mrs. Carroll Waldner
 Mr. and Mrs. William E. Welsh, Jr.
 Mrs. Louise M. Weschler
 Mr. and Mrs. Joseph E. Winter
 Dr. Roger Wu
 Mr. Dan Yates

Green Ribbon Donor Circle

Mrs. Carolyn T. Abaunza
 Mrs. Susan A. Abell
 Lucy H. Abernathy Fund of the
 Jewish Community Foundation
 Mr. and Mrs. Robert W. Ackerman
 Mrs. Mary Ryan Ackerman
 Mr. and Mrs. Douglas Adams
 Ms. Marguerite Adams and
 Mr. Thomas Foutz
 Ms. Mary Katherine Adams
 Mrs. Nancy Adams
 Ms. Mary E. Addison
 Mr. and Mrs. David V. Adler
 Mrs. Nancy A. Agnew
 Mrs. Patricia Aiken-O'Neill
 Mrs. Julie A. Albanese

Mrs. Patricia E. Alberding
 Ms. Joan Alders
 Ms. Margrit L. Algeciras
 Mrs. Mary F. Allan
 Mrs. Cynthia Allen
 Mrs. Patricia E. Allen
 Mr. and Mrs. Filomeno Almeida
 Mrs. Patricia Altenau
 Alumnae/i of the Sacred Heart,
 Bloomfield Hills
 Alumnae/i of the Sacred Heart,
 Duchesne, Omaha
 Alumnae/i of the Sacred Heart,
 Hamptons
 Alumnae/i of the Sacred Heart, Rochester
 Alumnae/i of the Sacred Heart,
 Southwest Florida
 Ms. Peanut Alvarez-Mena
 Mrs. Pilar Alvarez-Mena
 Mrs. Patricia S. Ambrose
 Mrs. Marcelle Amory
 Ms. Dorothy Anderson
 Mrs. Judith A. Anderson
 Mrs. Kristin M. Anderson
 Mrs. Maria K. Anderson
 Mrs. Sarah A. Anderson
 Ms. JoAnne E. Andrews
 Mr. and Mrs. William F. Anhut
 Ms. Mary Antin
 Dr. Helen E. Antoniak
 Mrs. Jeanette Antoniak
 Apple Matching Gifts Program
 Mr. and Mrs. David J. Arata
 Mr. Robert J. Armbruster
 Ms. Monica B. Armstrong and
 Mr. Donald J. Kapa
 Mrs. Barbara W. Arndt
 Mrs. Jean L. Artz
 Ms. Frances A. Asam
 Ms. Adriana M. Asdourian
 Mr. and Mrs. Anthony W. Asmuth, III
 Associates of the Sacred Heart -
 New Orleans

Ms. Maria Asteinza
 Mr. Michael A. Athanasiou
 Mr. and Mrs. Eugene Augustine
 Ms. Sarah J. Avery
 Mrs. Margaret J. Axelson
 Mrs. Genevieve M. Baay
 Ms. Cynthia Bacciocco
 Mr. Mathias and Mrs. Cristal Backer
 Mr. Peter L. Bacsik
 Mrs. Ella Jane Bailey
 Mrs. Frances A. Bailey
 Mrs. Marguerite Bailey
 Ms. Anne G. Baker
 Mr. and Mrs. John S. Baldini, Jr.
 Mrs. Lois A. Baldocchi
 Mrs. Andrea C. Balliette
 Bank of America
 Barat College Classes of 1960-1963
 Mrs. Bernadette A. Baraty
 Mrs. Rita M. Barichievich
 Mrs. Mary Dell Barkouras
 Mrs. Barbara A. Thunder Barnes
 Ms. Sheila Barnes
 Mrs. Helen Barnett
 Mrs. Nancy M. Barnidge
 Dr. Noel Barrett
 Mrs. Joan Barron
 Ms. Jeanie M. Barry
 Ms. Martha M. Barry
 Mrs. Elizabeth H. Bartky
 Ms. Michelle G. Bass
 Ms. Christine Bassett
 Mr. and Mrs. Kenneth Batchelor
 and Ms. Mary Breen
 Mrs. Judith S. Bauer
 Mrs. Erika M. Baumgartner
 Ms. Margaret D. Bausch
 Mr. and Mrs. Denis Baylor
 Mr. and Mrs. Thomas H. Beacom, Jr.
 Ms. Donna M. Beauregard and
 Mr. Ronald L. Eng
 Mrs. Margaret Beauregard

Ms. Rose M. Becerra
 Mrs. Anita W. Becker
 Anonymous
 Ms. Ruth L. Beering
 Mrs. Tara Beering
 Ms. Anne E. Begley
 Ms. Madeleine O. Begley
 Mrs. Margaret A. Behan
 Ms. Lavinia Bejarano
 Dr. and Mrs. Richard G. Belatti, Jr.
 Ms. Marie T. Bellas
 Ms. Pamela L. Belluomini, Ed.D.
 Mrs. Kathleen V. Beltrame
 Benevity Community Impact Fund
 Mr. and Mrs. Armand L. Bengle, Jr.
 Mrs. Geri-Anne Benning
 Mrs. Ellen R. Bent
 Ms. Alice M. Berdan
 Mrs. Lovella Beres
 Mrs. Gael Beresford-Raven
 Mrs. Elizabeth R. Berg
 Mrs. Mary M. Berg
 Ms. Elizabeth Bergamo
 Mr. and Mrs. Robert L. Berner, Jr.
 Dr. and Mrs. William F. Bernhard
 Col. and Mrs. William J. Berridge
 Mrs. Lois E. Bertagna
 Mr. and Mrs. Frank Besser
 Mr. and Mrs. James B. Betterman
 Mrs. Doris R. Beutenmuller
 Ms. Claudia L. Biggers
 Mrs. Carolyn Billings
 Mrs. Joan Binder
 Mrs. Maureen Binns
 Mr. and Mrs. Michael D. Bish
 Mrs. Virginia Bispo
 Mr. and Mrs. Richard Blach
 Ms. Mary Kay Black
 Dr. Melinda K. Blade
 Mrs. Marion Blanchard
 Mrs. Rosemary E. Blase, Ph.D.
 Mr. and Mrs. Norman J. Blears



Sisters Marianne Tavares, Mary-Jane Ferrier, Maria Cimperman, Shell Olson and Sheila Smith



Sisters Theresa Moser and Diana Wall



Provincial Barbara Dawson with her former provincial Mary (Be) Mardel.



At the AASH conference in Boston in April, Sister Joan Kirby, *RIP*, paid tribute to her dear friend, Sister Gail O'Donnell who received the Woman of Conscience Award from the AASH.



Oakwood Community Director Clare Pratt, RSCJ, with Duchesne House volunteer Julie Connelly.

- Ms. Barbara J. Blecka
 Mrs. Sandra H. Bley
 Ms. Sally Bloom
 Alumnae, Academy of the Sacred Heart,
 Bloomfield Hills
 Mrs. Mary Kathryn Blue
 Mrs. Catherine H. Bobzien
 Mrs. Mary B. Bocckino
 Ms. Cheryl A. Bodine-Reed
 Mr. and Mrs. Laurence G. Bodkin, Jr.
 Ms. Andrea K. Boehmer
 Mr. and Mrs. Anthony M. Bommarito
 Ms. Isabel Marie Bone
 Mr. and Mrs. Mark Bonino
 Dr. Suzanne Bono and Dr. Chip Bielinski
 Mrs. Clare C. Borah
 LTC. Jean S. Borden Ret.
 Mrs. Lynn D. Bordes
 Mrs. Lorraine D. Borel
 Ms. Joan M. Boulay
 Mrs. Sandra Bourdet
 Ms. Emily M. Bowden
 Mr. and Mrs. Donald S. Boyce
 Dr. Beverly M. Boyd
 Ms. Donna M. Boyd
 Mrs. Elaine L. Boyle
 Mrs. Linda E. Bradford
 Ms. Kathleen Bradley and
 Mr. John G. Cope
 Ms. Kathleen J. Bradley
 Ms. Lauren E. Bradley
 Mrs. Margaret Bradley
 Mrs. Susan C. Bradley
 Mrs. Suzanne Bradley
 Ms. Candie Brady
 Ms. Catherine C. Brady
 Mr. and Mrs. John Brady
 Mrs. Adria Brandt
 Ms. Constance P. Brandt
 Dr. and Mrs. Mark E. Branon
 Mrs. Maureen A. Bray
 Mrs. Patricia L. Breen
 Ms. Alice C. Brennan
 Mrs. Eileen F. Brennan
 Ms. Eileen K. Brennan
 Mrs. Helen M. K. Brennan
 Mrs. Ann L. Bresnan
 M.A. Brightbill Body Works, Inc.
 Ms. Aimee Brignac
 Ms. Anne L. Brillinger
 Mr. and Mrs. William H. Brine, Jr.
 Mr. and Mrs. Clarence J. Brinkman
 Bristol-Myers Squibb Foundation
 Matching Gift Program
 Mrs. Katharine W. Broderick
 Ms. Mary P. Brody
 Mrs. Suzanne Bromschwigg
 Mr. John C. Brons
 Mrs. Barbara L. Brooker
 Mrs. Nina M. Brooks
 Mrs. Mary L. Brorein
 Ms. Diana G. Brotherton-Ware
 Mrs. Joan B. Broussard
 Mrs. Barbara S. Brown
 Ms. Eleanor C. Brown
 Ms. Jane M. Brown
 Dr. Julie M. Brown
 Mrs. Kathleen T. Brown
 Ms. Mary H. Brown
 Mrs. Nicole B. Brown
 Mrs. Patricia M. Brown
 Mrs. Sheryl D. Brown
 Ms. Zoe C. Brown
 Mr. and Mrs. Richard C. Browne
 Ms. Ardith J. Brownsberger
 Brownson Circle Council of Catholic
 Women, Omaha
 Ms. Anne Bruce
 Mr. Patrick Bruni
 Mr. and Mrs. William S. Bruno
 Dr. M. Elizabeth H. Bruns
 Mrs. Florence A. E. Bryan
 Mr. and Mrs. George Buckland
 Mrs. Carol C. Budds
 Mrs. Mary Ann P. Budrovich
 Sra. Consuelo Navia De Buenaver
 Mrs. Susan G. Buese
 Mrs. Ann W. Bugg
 Mrs. Lawrence D. Buhl, Jr.
 Mr. and Mrs. Charles E. Bull
 Mr. and Mrs. Brian T. Bunch
 Ms. Bonnie-Lynne Burchett
 Mr. and Mrs. Andrew Burdic
 Mrs. Delia Burke
 Ms. Dina Burke
 Mrs. Elizabeth H. Burke
 Mrs. Janet Burke
 Mrs. James L. Burke
 Mrs. Lisa K. Burke
 Mr. and Mrs. Thomas J. Burke
 Ms. Marjorie W. Burke, Esq.
 Ms. Mary Elizabeth Burke
 Ms. Mary Ellen Burke
 Ms. Mary Stan Burke
 Mr. and Mrs. Richard F. Burke
 Mrs. Pamela Burkley-Peterson
 Ms. Janet E. Burlingame
 Mr. Guy V. Burnett
 Ms. Alice J. Burns
 Ms. Barbara G. Burns
 Ms. Julie P. Burns
 Mrs. Susan P. Burns
 Mrs. Vinita M. Burns
 Mrs. Carmen Bush
 Mrs. Helen O. Butler
 Mrs. Ann Buttrick
 Mrs. Marjorie L. Bycraft
 Mr. and Mrs. David M. Byers
 Ms. Mary B. Byrne
 Mrs. Victoria C. Cady
 Ms. Barbara A. Cagney
 Mr. and Mrs. James G. Caire
 Mr. and Mrs. Charles A. Calderwood
 Mrs. Mary N. Calise
 Ms. Frances B. Call
 Dr. Sharon A. Callaghan

Ms. Aileen Callahan
 Ms. Clare Callahan
 Mr. and Mrs. Kevin B. Callanan
 Ms. Barrie S. Callender
 Ms. Virginia I. Calvo
 Mrs. Suzanne Cameron
 Mrs. Brenda B. Camou
 Ms. Veronica M. Campbell
 Mrs. Maria P. Candito
 Mrs. Virginia P. Candler
 Mrs. Ann C. Cane
 Ms. Helen Cannistraci
 Dr. and Mrs. Richard Cannon
 Mrs. Berta Canto
 Ms. Palmira Cantu
 Mr. and Mrs. Felix R. Capobianchi
 Ms. Sarah A. Carbone
 Ms. Angela C. Cardon
 Ms. Elizabeth A. Carlson
 Mr. and Mrs. James H. Carney
 Ms. Margaret M. Carney
 Mrs. Dorothy H. Carolin
 Mr. and Mrs. John P. Carr
 Mrs. Margarita L. Carreño
 Ms. Barbara Carter
 Dr. Mary R. Carter
 Mrs. Nan M. Carter
 Ms. Patricia Carter
 Mrs. Rosina M. Carter
 Mrs. Anne S. Carty
 Ms. Elizabeth A. Carty
 Ms. Josephine Caruso
 Mrs. Frances L. Carville
 Mrs. David L. Cary
 Mr. and Mrs. John N. Casbon
 Mr. and Mrs. Edward A. Casey, Jr.
 Mrs. Faith G. Casey
 Mrs. Patricia Casper
 Mr. and Mrs. Mark A. Cassanego
 Mr. and Mrs. Martin Cattaneo
 Mrs. Victor Andrew Cavallari
 Dr. and Mrs. Patrick J. Cavanaugh

Mr. and Mrs. Thomas R. Cellitti
 Cerner Corporation
 Mrs. Phyllis Cetrone
 Mr. and Mrs. Gerald D. Chachere
 Mrs. Joan R. Challinor
 Mrs. Gloria Chamorro
 Mrs. Achamma Chandarsekaran
 Ms. Edith M. Chapman
 Mrs. Anna B. Charlton
 Mrs. Mary P. Chatfield
 Mr. Francis S. Chen
 Dr. Elia V. Chepaitis
 Chevron Humankind
 Children of Mary, Bloomfield Hills
 Children of Mary, Forest Ridge
 Children of Mary, New Orleans
 Mrs. Lorraine T. Childs
 Mrs. Carol M. Chin
 Ms. Patricia E. Chisholm
 Mrs. Martha Z. Cho
 Mrs. Alicia B. Christopher
 Mr. Bernard Chu
 Dr. Young C. Chung
 Ms. Christina Chvala
 Mr. and Mrs. Clarence J. Ciaccio
 Dr. Joseph J. Ciancaglini
 Mr. and Mrs. Robert J. Ciapciak
 Ms. Sara M. Cinibulk
 Mr. James J. Ciongoli
 Mrs. Jessica Clark
 Ms. Kathrene H. Clark
 Ms. Lynda S. Clark
 Mrs. Sallie M. Clarke
 Mrs. Nicole Clay
 Mrs. Anne Marie Clayton
 Mr. and Mrs. James F. Cleary
 Mrs. Eleanor P. Clem
 Mrs. Sally Cliff
 Mr. and Mrs. Nicholas B. Clifford, Jr.
 Ms. Carolyn A. Cline
 Mrs. Regina Clinton
 Mrs. Camilla D. Cloney

Mrs. Rosemary Cloran
 Mrs. Jane M. Clune
 The W.C. Coale Family
 Mrs. Katharine A. Cobb
 Mr. and Mrs. Robert W. Cockren
 Mr. Edward C. Coffey
 Ms. Andrea B. Coffman
 Mrs. Patricia M. Colbert
 Mrs. Constance Cole
 Ms. Constance D. Coleman
 Ms. Renee B. Coleman
 Ms. Sally S. Coleman
 Mrs. Patricia R. Colett
 College Access Foundation of California
 Ms. Deanne Colligan
 Ms. Domini C. Collins
 Ms. Elizabeth L. Collins
 Mrs. Geraldine C. Collins
 Miss Janet Collins
 Mr. and Mrs. David E. Collins
 Mrs. Margaret S. Collins
 Mrs. Ellen C. Collins-Boyce
 Mrs. Patricia M. Collmeyer
 Mrs. Mary Jane W. Collopy
 Mrs. Joyce S. Comfort
 Dr. and Mrs. John F. Commerford
 Ms. Jane G. Conarchy
 Mr. and Mrs. Joseph Conlan
 Mr. Arthur J. Conley
 Mr. and Mrs. Michael Conley
 Mrs. Lisa W. Conlon
 Mrs. Mary Alma Connell
 Ms. Julie Connelly
 Mrs. Mary M. Connelly
 Mrs. Carol V. Conners
 Ms. Shirley G. Connolly
 Ms. Mary Ann Connor
 Ms. Patricia A. Connor
 Mrs. Katharine W. Conroy
 Convent of the Sacred Heart, Greenwich
 Ms. Kimberly J. Conway
 Ms. Andrea-Marie M. Coombs



Sisters and friends, Sisters Margaret and Ann Caire



Sisters Joan Magnetti and Jan Dunn



Longtime friends from their days in Chicago, Sisters Carol Campbell and Pam Hickey are back together in the Menlo Park area.



Sister Donna Collins, head of the high school at Villa Duchesne



Sister Juliet Mousseau assisted Father Sean Martin at the opening liturgy at the Shrine of Saint Rose Philippine Duchesne, during assembly/chapter.



Associates Kristi Laughlin and Michelle Hogan spoke about their vocation as associates to the RSCJ at assembly.



Sisters Mary Pat White, Lucie Nordmann and Marianne Ruggeri

Mrs. Maria E. Coombs
 Mrs. Barbara L. Cooney
 Ms. Mary Louise Cooney
 Ms. Lydia Cooper
 Dr. Paula A. Cordeiro
 Mrs. Jane H. Cordell
 Ms. Mary Anne Corrier
 Mrs. Althea Corsini
 Ms. Priscilla A. Cosgrove
 Ms. Tiffany Cossich
 Mrs. Joan A. Costamagna
 Mrs. Marian G. Costello
 Mrs. Mary G. Costello
 Mrs. Ann F. Cote
 Mrs. Duane E. Couch
 Mrs. Virginia B. Coudert
 Mrs. Christine H. Coughlan
 Mrs. Dorothy S. Coughlin
 Mrs. Anne C. Couvillion
 Mr. and Mrs. Thomas C. Cox
 Col. and Mrs. Robert L. Craig
 Mr. and Mrs. James Crandall
 Ms. Catherine Crane
 Mrs. Jeanne Crayton
 Mrs. Joanne Creasey
 Mr. and Mrs. John W. Croghan
 Mrs. Jane Cronin
 Ms. Alexandra C. Crosetti
 Ms. Christina A. Crowley
 Mrs. Joyce E. Crowley
 Dr. Patricia Ann Crowley
 Mrs. Sheila G. Crowley
 Mr. Thomas K. Crumlish
 Ms. Jane D. Cruz
 Ms. Lizmary Cruz
 Mr. and Mrs. James Csaposs
 Ms. Vivienne T. Cuadrado
 Mrs. Margaret O. Culver
 Mrs. Shirley E. Cummings
 Mr. and Mrs. Richard J. Cummins
 Ms. Mary Constance Cumiskey
 Mr. and Mrs. John J. Cunningham, III

Dr. Mary Ellen H. Curran
 Mrs. Catherine M. Dabo
 Ms. Louise M. Dagit
 Mrs. Margaret M. Dagit
 Ms. Clayelle L. Dalferes
 Mrs. Elizabeth A. Dallman
 Mrs. Mary Helen Daly
 Mrs. Ann B. Dames
 Mrs. Mary C. Danaher
 Ms. Violetta R. Daniels
 Mrs. Katherine K. Dare
 Mr. and Mrs. Peter D'Arrigo
 Dr. and Mrs. J. Lawrence Davis
 Ms. Maude S. Davis
 Mrs. Masako Davison
 Mrs. Gael E. Davitt
 Mr. and Mrs. Donald J. Dawson, Jr.
 Mrs. Lenore de Csepel
 Ms. Alina de la Fuente St. Louis
 Mr. and Mrs. Cyril De Meulemeester
 Mrs. Carmen de Moya
 Deaf & Hard of Hearing Dept.,
 Ladue Early Childhood Center
 Mr. and Mrs. James J. Dealy
 Mrs. Janice A. Debastiani
 Mrs. Clare Decker
 Mr. and Mrs. Creighton D. Decker
 Mrs. Sheila F. DeCosse
 Ms. Donna E. Deeley
 Mrs. Barbara DeHaven
 Deitch Buses Inc.
 Mrs. Kathleen DeJohn
 Mrs. Leah DeJoseph
 Mr. and Mrs. Oliver S. Delery, Jr.
 Mrs. Olha Della-Cava
 Ms. Catheryn M. Delorme
 Ms. Lorie G. Demarcay
 Mr. and Mrs. Michael DeMeter
 Ms. Mary H. Derbes
 Mr. and Mrs. Edward F. DeRoche
 Ms. Katherine Dervin
 Ms. SantaJean DeSantis

Mr. and Mrs. Phillip C. Desloge
 Kathleen McAuliffe Desloge *RIP*
 Mrs. Barbara Desmond
 Ms. Monique M. Desormeau
 Ms. M. Katherine Desposito
 Mr. and Mrs. Julian C. D'Esposito, Jr.
 Mrs. Colleen C. Detjen
 Mrs. Caroline C. Detwiler
 Ms. Carol DeVincenzi
 Mrs. Teresa Devincenzi
 Ms. Christine DeVoto
 Mr. and Mrs. Gonzalo A. Diaz
 Mrs. Mary Ann Diehr
 Mrs. Patricia Diepenbrock
 Ms. Kathleen M. DiGiovanna
 Mrs. Francesca Digirolamo
 Ms. Gail W. Dillon
 Mrs. Allison C. DiNardo
 Mrs. Richard S. Dinner
 Mrs. Marcelle D. Dinsdale
 Mrs. Anita H. DiSomma
 Mrs. Casey Dixon
 Ms. Patricia A. Dixon
 Mrs. Anna N. Dodds
 Mrs. David S. Dodge
 Mrs. Rosemary Doerr
 Mr. Gregg W. Doherty
 Mrs. Jean Dolan
 Mr. and Mrs. Edward Donaghy
 Ms. Betty J. Donahoe
 Ms. Sheila F. Donahoe
 Mrs. Barbara F. Donahue
 Mrs. Dolores M. Donahue
 Mrs. Nadine Donahue
 Mrs. Joan E. Donaldson
 Ms. Dolores V. Donhini
 Mrs. Sarah Donnelly
 Miss Catharine-Mary Donovan
 Mrs. Elizabeth Anderson Dornberger
 Mrs. Ann Marie Dorr
 Deacon Dan Dorsey
 Ms. Patricia M. Dorsey

Mr. and Mrs. Thomas R. Dowd
 Mrs. Mary E. Dowd
 Mrs. Martha F. Dowell
 Mrs. Carolyn Dowling
 Mr. and Mrs. Stephen A. Dowling
 Mr. and Mrs. Edward F. Downey, Jr.
 Mrs. Jean H. Downey
 Miss Anne M. Doyle
 Mrs. Frances B. Drees
 Ms. Mary Katherine Driscoll
 Mrs. Florence B. Druckenbrod *RIP*
 Mrs. Francesca H. Drum
 Sister Marie Angelique Dryden OP
 Mrs. Cathy Duane
 Mr. and Mrs. Peter M. Dubinsky
 Mrs. Julie Dubray
 Ms. Roberta D. Dubuque
 Mrs. Josette Ducote
 Mrs. Ann M. Duer
 Mrs. Lily T. Duggan
 Mrs. Ruth K. Dull
 Ms. Caroline M. Dulle
 Ms. Deborah N. Dunham
 Mrs. Leonora A. Dursin
 Mrs. Nancy D. Dutton
 Ms. Barbara H. Dwyer
 Mrs. Rosemary S. Dwyer
 Mr. and Mrs. Thomas W. Dyer
 Mr. and Mrs. Daniel A. Dziedzic
 Ms. Mary E. Eagan
 Mrs. Barbara A. Eagleton
 Mrs. Christine M. Eastburn
 Ms. Francesca Eastman
 Dr. and Mrs. John E. Ebel
 Ms. Barbara M. Eberle
 Mr. Peter F. Eberle
 Ms. Mariah E. Echele
 Mrs. Elizabeth D. Eckl
 Mrs. Ninette A. Edmiston
 Dr. and Mrs. John O. Edmunds, Jr.
 Mrs. Mary A. Edwards
 Mrs. Ann Cathleen Egan-Cronin

Ms. Carol M. Eggers and
 Mr. Brian Haynsworth
 Mrs. Susan Eggers and
 Mr. Robert Goldman
 Mrs. E. Ralph Egloff
 Mrs. Louis B. Eichhold
 Mr. and Mrs. Edward W. Eick
 Mr. and Mrs. Edward D. Eidt
 Mrs. Kate Elkins
 Mr. and Mrs. Coby Ellingwood
 Mrs. Lucy Elliot
 Mr. and Mrs. Thomas E. Elliott
 Ms. Louise F. Elmofty
 Ms. Karen E. Emge
 Mr. and Mrs. Kevin W. English, Sr.
 Mrs. Nancy R. Epple
 Mr. Walter Ernest
 Mrs. Florence Ernzen
 Mrs. Judith Essex
 Mrs. Ilona Ertlenyi
 Mrs. Rebecca Etter
 Mrs. Catherine Eustis
 Ms. Margaret M. Evans
 Mr. and Mrs. Timothy D. Fagin
 Mr. Christopher R. Fahey
 Mrs. Bonnie A. Faimon
 Mrs. Eleanor S. Fairclough
 Mrs. Conchy Fajardo-Hopkins
 Mr. and Mrs. Richard Falge
 Mr. and Mrs. Peter G. Fallon
 Ms. Nancy T. Fanning
 Ms. Kathleen K. Farley
 Mrs. Rosaleen S. Farley
 Mr. and Mrs. James L. Farrell, Jr.
 Mr. and Mrs. Jerald F. Farrell
 Mrs. Mary Pat Farrell-Diekemper
 Mrs. Rosemary A. Fasl
 Mr. William J. Fay
 Mrs. Catherine K. Feldhaus
 Mrs. Eleanor G. Fenton
 Dr. and Mrs. Thomas P. Ferlic
 Ms. Maria L. Fernandez

Ms. Sharon A. Ferrill
 Ms. Patricia Ferris
 Dr. Jenny K. Ferrone
 Mr. and Mrs. Kenneth G. Fettig
 Mr. Jeremy Fields
 Mrs. Linda M. Fikes
 Mr. and Mrs. Stephen C. Finley
 Mr. and Mrs. J. Reed Finn
 Mrs. Dorsi Finnegan
 Mrs. Mary C. Finnegan
 Mrs. Martha L. Finney
 Mrs. Andrea B. Fisher
 Fishing Creek Transportation, Inc.
 Mr. and Mrs. Charles Fitch
 Mr. and Mrs. John R. Fitzgerald
 Ms. Virginia Fitzgerald
 Mrs. Margaret King Fitzpatrick
 Mrs. Mary L. Fitzpatrick
 Ms. Barbara J. Flannery
 Mrs. Jacqueline H. Flood
 Ms. Carol A. Flynn
 Ms. Diane Flynn
 Mrs. Isabel H. Flynn
 Ms. Jeannine C. Flynn
 Mr. and Mrs. Kevin Flynn
 Mrs. Loretto Flynn
 Dr. Rita J. Flynn
 Mr. Brendan J. Fogarty
 Mr. Kevin Fogarty
 Mr. and Mrs. Peter F. Foley, III
 Ms. Kathryn A. Foley
 Mrs. Kathleen M. Foote
 Mrs. Raymond E. Foote
 Mr. and Mrs. Pat S. Foran
 Mrs. Eileen Ford
 Ms. R. Ann Ford
 Hon. Anna C. Forder
 Mr. and Mrs. Stuart A. Forsyth
 Mrs. Christine Fortier
 Mrs. Avery Foster
 Mr. and Mrs. James G. Foster
 Mrs. Mary L. Fournie



Alice Burns, president of AASH, 2013-2015, Esther Kmetty, local Congress Coordinator for the AMASC Congress, and Maureen Elliott, Secretary General of AMASC.



Barbara Lopiccolo, AMASC Vice President, and Wendy Delery Hills, Treasurer, at the AMASC Congress in Scottsdale.



Sisters Ellen Collesano and Rosemary Bearss



Sister Patricia Murphy



Sister Lolin Menendez



Sisters Susan Maxwell and Nance O'Neil, first provincial of the United States province from 1982-1988 and now serving in Indonesia.

Ms. Beth Fournier-Foch
 Mr. and Mrs. Michael C. Foux
 Mr. and Mrs. Robert Francez
 Mrs. Marilyn M. Frank
 Mrs. Martin D. Fraser
 Mrs. Mary Frawley-Thompson
 Mr. and Mrs. William T. Free, Jr.
 Freedman Seating Company
 Mrs. RoseMary M. Freedman, RN
 Ms. Joan M. Freese
 Mrs. Frances Fremin
 Mrs. Patricia C. Freund, RN
 Mr. and Mrs. Richard F. Frisch
 Mrs. Jo Ann K. Fritschel
 Mr. and Mrs. Rory Fuerst
 Dr. and Mrs. Wayne Fung
 Mrs. Jean Furay
 Mr. Richard J. Gaffney
 Ms. Helen A. Gagen
 Mrs. Mary Galdes
 Mrs. Harriet H. Galdi
 Mrs. Patricia Gallacher
 Dr. Bernice E. Gallagher
 Mrs. Rosanne Gallagher
 Mrs. Mary C. Gallaway
 Mrs. Catherine Gallick
 Mrs. Maria Gambino
 Mrs. E. Rickey Gamore
 Ms. Beth E. Ganslen
 Mrs. Patricia C. Garczynski
 Mr. and Mrs. John Gardner
 Mrs. Patricia F. Garffer
 Mrs. Victoria S. Gartland
 Mrs. George Gaston
 Mrs. Alma H. Gates
 Mr. and Mrs. Norman J. Gatzert
 Sister Kathleen Geaney RSM
 Ms. Margaret H. Gebhard
 Ms. Barbara B. Gee
 Mr. and Mrs. Gregory T. Gelfand
 Mrs. Yvonne Roth Gelpi
 Mrs. Judith M. George

Mrs. Patricia K. Georgi
 Ms. Kathleen M. Geraghty
 Ms. Elizabeth Gerber
 Anonymous
 Mr. and Mrs. Andrew C. Gerlach
 Dr. Mary M. Germain
 Mrs. Michele J. Gerrits-Faeges
 Mrs. Maria F. Gerrity
 Ms. Leana C. Giannini
 Ms. Virginia Gibbs
 Mr. and Mrs. Brian Giblin
 Mrs. Betsy Gier
 Mrs. Susan J. Gilardi
 Mr. and Mrs. Thomas F. Gilbane
 Mrs. Donna T. Gilboa
 Mrs. Juliana F. Gilheany
 Ms. Gail A. Gill
 Ms. Angela M. Gillespie
 Mr. and Mrs. Clifford M. Gillespie
 Ms. Elise C. Gillette
 Mrs. Joanne Moran Gilmore
 Capt. Harry Gimber
 Mr. and Mrs. Douglas A. Gimber
 Girardat LP
 Mrs. Judith R. Gittleman
 Ms. Frances S. Glasser
 Ms. Marion E. Glennon
 Mr. and Mrs. Louis Glunz, III
 Ms. Helen D. Gochring
 Mrs. Elizabeth E. Golden
 Ms. Martha A. Golden
 Mr. and Mrs. Richard Gomez
 Mrs. Elizabeth D. Goodyear
 Mrs. Elaine Gordon
 Major and Mrs. Wallace B. Gorski
 Mrs. Anna J. Goss
 Mrs. Melanie Goudelocke
 Mrs. Marcia F. Gowen
 Mrs. Michelle O'Shea Grady
 Ms. Phyllis A. Grady
 Mrs. Clara Graff
 Mrs. Bonnie Graham

Mrs. Janet M. Graham
 Mrs. Martha B. Graham
 Ms. Susan Graham
 Mr. and Mrs. William A. Graham, IV
 Ms. Nancy E. Grant
 Mrs. Alice A. Grayson
 Mr. and Mrs. Richard C. Green
 Mrs. Mary Katharine Green
 Mrs. Penny D. Green
 Mrs. Judith H. Greenley
 Mrs. Kathleen K. Greenman
 Ms. Diana M. Greenwood
 Mrs. Linda A. Gregg
 Sr. Margaret M. Gregg CSJ
 Mrs. Virginia G. Gregory
 Mrs. Gwen L. Gregory-Conzelman
 and Mr. Murray R. Conzelman
 Ms. Laura E. Griesedieck
 Mrs. Carla M. Grieve
 Mrs. Helene J. Griffin
 Mrs. Shirley B. Griffin
 Mr. Steve Griffith
 Ms. Jere M. Grimm
 Mr. and Mrs. Robert J. Grimm
 Gross Equipment Company Inc.
 Mrs. Catherine S. Gross
 Mrs. Nancy Grote
 Mrs. Thérèse Grote
 Mrs. Roseann F. Guerrini
 The Guice Family Foundation
 Dr. Elizabeth Guillaumin
 Dr. Mary K. Gumerlock
 Mrs. K. Marie Gumucio
 Ms. Elizabeth C. Gundlach
 Mrs. Diane E. Gutierrez
 Mrs. Deborah Gwazda
 Mrs. Margaret A. Haberlin
 Ms. Joan C. Hadden
 Mrs. Susan D. Hagan
 Mr. and Mrs. Paul Haggas
 Ms. Ann P. Hahn
 Mrs. Louise A. Haines

Ms. Meaghan E. Haire
 Mr. and Mrs. Richard A. Hall
 Mrs. Dennis M. Haller
 Ms. Helen B. Hall-Mineau
 Ms. Anita K. Halton
 Ms. Virginia M. Hamel
 Ms. Cheri Hanemann
 Mr. and Mrs. John Hanichak
 Mrs. Patricia B. Hanley
 Mrs. Barbara H. Hanna
 Ms. Mary S. Hanning
 Mrs. Clara Hansbery
 Mr. and Mrs. Morten Hansen
 Mr. Lee A. Hanson
 Ms. Mary Jill Hanson
 Ms. Yukiko E. Hara
 Mrs. Nancy C. Hardart
 Mrs. Harold M. Harger
 Mrs. Laura Haroian
 Ms. Anne Harrington
 Ms. Ellen M. Harrington
 Ms. Kathleen F. Harrington
 Mr. and Mrs. John F. Harrington
 Mrs. Joan B. Harrison
 Ms. Virginia Harrison
 Ms. Claire-Marie Hart
 Ms. Marie J. Hartigan
 Mrs. Leonard J. Hartnett
 Mrs. Joan Walet Hartson
 Mrs. Louise M. Hatch
 Ms. Nicole M. Hatoun
 Mrs. Susan S. Hatta
 Mrs. Kathryn C. Hattox
 Mrs. Rose Mary F. Haug
 Ms. Mary Claire Hayek
 Mr. and Mrs. John P. Hayes
 Mrs. Pamela J. Hayes
 Ms. Susan A. Hays
 Mrs. Louise Hayward
 Mr. and Mrs. Thomas F. Heafey
 Mr. and Mrs. Edward C. Heafey
 Mr. Jim Heafey

Ms. Ann R. Healey
 Ms. Frances M. Healey
 Mr. and Mrs. Edward Healy
 Capt. and Mrs. Kevin M. Healy
 Ms. Marilee Hearn
 Mrs. Jane Hebert
 Mrs. John P. Heffernan
 Mrs. Elizabeth W. Heid
 Mrs. Anne N. Heidt
 Mr. Norwin G. Heimos
 Mrs. Mary Lee Heinrich
 Mrs. Virginia J. Helbling
 Mrs. Elizabeth Helm
 Mrs. Ellen M. Henahan
 Mrs. Melissa P. Henderson
 Ms. Mary C. Henkel and
 Mr. Patrick C. Larkin
 Ms. C. Erin Hennessey
 Mrs. Marie M. Hennessy
 Mrs. Janice H. Henrotin
 Ms. Betty J. Henry
 Mrs. Darlene Henson
 Mrs. Paula Herbert
 Mrs. Elizabeth A. Herguth
 Ms. Laura M. Herrera
 Mrs. Magali Herreros
 Mrs. Elizabeth S. Hesse
 Mrs. Christine M. Heuring
 Mrs. Jeanne C. Hevesy
 Mr. and Mrs. James Hewett
 Mr. and Mrs. George L. Hickenlooper
 Mr. and Mrs. J. William Hicks
 Mrs. Patricia M. Hicks
 Mr. and Mrs. Randy Higginbotham
 Mrs. Barbara S. Higgins
 Mr. Thomas D. Higgins
 Mrs. Lindsay G. Hill
 Ms. Annette H. Hillary
 Mrs. Winifred Hills
 Mr. Dominic Himich
 Mr. and Mrs. Steven H. Hippe
 Ms. Ann M. Hirsch

Ms. Katherine B. Hirsch
 Mrs. Kathleen Hirsch
 Mr. and Mrs. John J. Hobza
 Ms. Susan A. Hoeffel
 Mrs. Catherine Hoehn
 Mr. and Mrs. Richard Hoekzema
 Mrs. Agatha Hoff
 Mr. and Mrs. Ronald D. Hoffman
 Anonymous
 Ms. Margaret I. S. Hofstee
 Mr. and Mrs. William M. Hogan, III
 Ms. Michelle Hogan
 Mrs. Nancy L. Hogan
 Dr. and Mrs. Patrick C. Hogan
 Hoglund Bus and Truck Co.
 Mrs. Lisa T. Holden
 Mrs. Mary O. Holland
 Mrs. Carol A. Holley
 Ms. Virginia G. Holm
 Mr. and Mrs. Daniel E. Holmes
 Mrs. Susanne L. Holsen
 Mrs. Julie C. Holt
 Mrs. Henrietta Holton-Thomas
 Mr. and Mrs. Francis J. Hone
 Mr. and Mrs. David E. Hoover
 Mrs. Lois L. Hopkins
 Ms. Shannon E. Hopp
 Mr. Derek Hopper
 Mrs. Kathleen A. Hopper
 Mr. and Mrs. Larry Horacek
 Ms. Lucille M. Hornby
 Ms. Barbara Hosaka
 Ms. Mary G. Hould
 Mrs. William K. Howenstein
 Mrs. Georgia Howton
 Dr. Joy Hudecz
 Ms. Susanne Huebner
 Mrs. Margery M. Huemmler
 Dr. James V. Huerter
 Mrs. Mary Frances Hughes
 Mrs. Eleanor M. Hughes-Fulmer
 Mrs. Harriet Hull



Sisters Paula Gruner, Pricillian Nyirampamira and Deanna Rose Von Bargaen



Sisters Marcia O'Dea and Sally Stephens



Sisters Judy Vollbrecht and Joan Gannon



Abba House community, Albany. Front row: Sisters Mary Loretta Busch, Hilda Carey, Pat Reid. Back row: Director of Teresian House Sister Joan Gannon; Director of Abba House community Sister Marie Buonato; Sisters Rosemary Roney and Angela Bayo.



Avila Lodge community, Albany. Front row: Sisters Dorothy Murray, Eleanor Carr, Mary Helen McComas, Eve Cavanaugh, Jean Bautz. Back row: General Council Member Catherine Lloyd, Superior General Kathleen Conan and Sisters Arcadia Cotto, Betty Shearman and Mary Jane Sullivan.

Mrs. Patricia C. Hult
 Ms. Blanche M. Hunnewell
 Ms. Constance A. Hunter
 Mrs. Patricia Del Hunter
 Mr. Christopher J. Husson
 Dr. and Mrs. John J. Hutchings
 Mrs. Karen F. Hutchinson
 Mrs. Gloria B. Hutchison
 Mr. and Mrs. Jimmy Hybart
 Mr. and Mrs. James B. Hyde, Jr.
 Mrs. Joanne O. Hynek
 Mrs. Mary S. Ibbetson
 Mrs. Shizuko S. Ichiyasu
 Mrs. Marie Elizabeth B. Igleheart
 Mrs. Henry J. Imwalle
 Ms. Sayaka Inaishi
 Mr. and Mrs. Mark D. Innes
 Mrs. Thomas M. Irwin, Jr.
 Mr. and Mrs. David Ish
 Ms. Isabel H. Ishino
 Mr. Alejandro F. Issel
 Mr. and Mrs. Mario Ivanov
 Ms. LouElla Jackson
 Ms. Marie Jackson
 Mrs. Carol R. Jacobs
 Mrs. Patricia B. Jacobs
 Ms. Brooke Janis
 Mrs. Judith H. Janowiak
 Mrs. Patricia D. Jeffries
 Mrs. Suzanne Jehle
 Ms. Eleanor A. Jekot
 Ms. Catherine H. Jensen
 Mrs. Kathleen M. Jewett
 Mrs. Margaret Johannesman
 Mrs. Kathleen Johansen-Stagg
 Mrs. Barbara Johansen
 Mrs. Elizabeth M. Johnson
 Mr. and Mrs. Calvin H. Johnson
 Ms. Sandra S. Johnson
 Mrs. Susan R. Johnson
 Mr. Walter E. Johnson
 Ms. Kathleen I. Johnston

Mrs. Carolyn O. Jones
 Mrs. Cecile M. Jones
 Mrs. Thad H. Joos
 Ms. Kathryn J. Jordan
 Mrs. James J. Jordan
 Mrs. Kathryn Jorgensen
 Joyce Higgins Trust
 The JPMorgan Chase Foundation
 Ms. Mary M. Jud
 Dr. Barbara J. Judge
 Mrs. Jane F. Jurkovich
 Father Edward S. Kacerguis
 Mrs. Suzanne D. Kaleel
 Mr. and Mrs. Olen A. Kalkus
 Ms. Masayuki Kamata
 Ms. Patricia A. Kamlin
 Ms. Julie Kammerer
 Mrs. Carol M. Kane
 Katharyn Curtin Readers
 Mrs. Evelyn Katz
 Ms. Justena S. Kavanagh
 Mrs. Dolores M. Keefe
 Mrs. William F. Keeshan, Jr.
 Mrs. Rose Ann Kehoe
 Mrs. J. Caroline S. Kelleher
 Ms. Kathie Keller
 Mrs. Patricia A. Kelley
 Mr. and Mrs. Cornelius F. Kelly
 Ms. Anne M. Kelly
 The Kelly Family
 Mr. and Mrs. Thomas F. Kelly
 Mr. and Mrs. Mark J. Kelly
 Mr. and Mrs. Robert G. Kelly, Jr.
 Mrs. Rosann D. Kelly
 Ms. Sharon A. Kelsch
 Mrs. Margaret Kemmerly
 Ms. Mary Ann Kenkel
 Ms. Patricia B. Kenney
 Mrs. Roma A. Kent
 Mrs. Cathleen G. Keogh
 Dr. Nancy A. Kernan
 Mrs. Mary Ann Kerwin, Esq.

Ms. Margaret F. Keyes
 Mrs. Mary Ann Keyes
 Keystone Insurers Group, Operated by
 Reed, Wertz & Roadman
 Mrs. Jana H. Kiely
 Mrs. Carmen Kilcullen
 Mr. and Mrs. Gabe Kiley
 Mr. and Mrs. John M. Kinabrew, III
 Ms. Dolores Fernandez Kincaid
 Mrs. Gale A. Kirkwood
 Dr. and Mrs. Robert L. Kistner
 Mr. and Mrs. David L. Klehr
 Mrs. Nancy M. Klein
 Mrs. Deborah Klose
 Ms. Diane Klosterman
 Mr. and Mrs. William J. Klover
 Dr. and Mrs. Richard A. Knazek
 Mrs. Mary Knott
 Mrs. Jane R. Knudson
 Ms. Mary Frances Koch
 Mrs. Mary Ann Kocurek
 Mrs. Margaret Koenen
 Mr. and Mrs. Bradford C. Koenig
 Mrs. Geraldine C. Koesters
 Mr. and Mrs. Al W. Koke, Jr.
 Ms. Patricia C. Kolbe *RIP*
 Mrs. Patricia A. Kolojeski
 Mr. and Mrs. George Koltze
 Ms. Patricia J. Konert *RIP*
 Korean Alumnae of the Sacred Heart
 College, San Diego
 Mr. and Mrs. Bernard H. Koster
 Mrs. Eموke B. Kovacs
 Mr. and Mrs. Gregory Kozak
 Mr. Edward J. Koznarek
 Mrs. Joan Kramer
 Ms. Susan M. Kratochvil
 Mrs. Linda L. Kraus
 Ms. Alexis G. Krot
 Mr. Paul E. Kubitschek
 Mrs. Florence M. Kueser
 Ms. Suzanne M. Kuhn

Mr. and Mrs. Edwin D. Kuhr
 Mrs. Barbara Catoggio Kullen
 Mrs. Ann T. Kullman
 Mrs. Loretta Anne Kumpf
 Ms. Katherine M. Kunz
 Mrs. Mary Kay Kurzweg
 Ms. Catherine S. Kwon
 La Prima Catering
 Ms. Germaine K. LaBerge
 Mr. and Mrs. R. Scott LaRue
 Mrs. Gertrude C. LaFerté
 Mrs. Linzee E. LaGrange
 Mr. and Mrs. Michael Lahue
 Ms. Nadia Lakah
 Mrs. Juliana F. Lally
 Mrs. Brigid S. Lamb
 Ms. Kathleen D. Lamb
 Mrs. Abigail Lambert
 Mr. and Mrs. Arthur Lampe
 Ms. Mary W. Lamy
 Dr. Joan S. Lanahan
 Mrs. Virginia F. Landblom
 Mr. and Mrs. Thomas F. Landers
 Mrs. Elizabeth M. Landis
 Mrs. Joan S. Lane
 Mrs. Stephanie Lane
 Dr. and Mrs. John J. Lang
 Mrs. Kathleen Langdon
 Mr. and Mrs. Michael S. Langenfeld
 Mrs. Spencer K. Lanyi
 Ms. Mary J. Larkin
 Mrs. Alfred V. Larrenaga
 Mrs. Agnes LaStoria
 Dr. and Mrs. Roy C. Latall
 Mrs. Mary Jane Latino
 Mrs. Rosemary M. Laughlin
 Mr. and Mrs. Boyd F. Lauritsen
 Ms. Judith L. Lavallee
 Ms. Rosemary C. Lavelle
 Ms. Kathy O. Lavezzo
 Mrs. Elizabeth H. Lavin
 Mrs. Mary Ann T. Lavoie



Religious of the Sacred Heart from throughout the province gathered with former RSCJ on the Feast of Saint Madeleine Sophie at Sprout Creek Farm.



Religious of the Sacred Heart at the *Prayer and Dialogue* gathering in Montreal



A special gathering of province members aged 65 and under.

Ms. Geraldine M. Lawhon
 Ms. Christina Lawrence
 Mr. Scott Lawrence
 Mrs. Joanna D. Lawton
 Mr. and Mrs. Thomas P. Lawton
 Miss Jane A. Layman
 Mr. Stephen A. Layman
 Mrs. Alexandra W. Layton
 Mrs. Judith M. Lazarus
 Mrs. Cornelia W. Le Maitre
 Mrs. Elisabeth Leach
 Ms. Nancy Leamy
 The Leavell Family
 Mr. and Mrs. Edward J. Lebeau, Jr.
 Miss Ashley LeBlanc
 Mr. David R. LeBlanc
 Mr. and Mrs. J. Dwight LeBlanc, Jr.
 Dr. and Mrs. Andrzej J. Lechowicz
 Mrs. Elizabeth B. Leckie
 Mrs. Carol M. Lee
 Ms. Grace N. Lee
 Mrs. Isabel L. Lee
 Mrs. Nora Leibold
 Mr. and Mrs. Joseph M. Leinhauser
 Mrs. Molly Leland
 Mr. Douglas D. Lemmons
 Leonard Bus Sales, Inc.
 Miss Josephine T. Leong
 Mrs. Martha S. Lepore
 Ms. Cora B. LePorin
 Mr. and Mrs. Joseph L. Leritz
 Mrs. Eileen B. Lerum
 Mr. and Mrs. Frank J. Leto
 Mrs. Margaret D. Liautaud
 Dr. Joan Liddell
 Ms. Margaret Alice Lieux
 Ms. Lucy G. Liggett
 Dr. Margaret M. Liggett
 Mrs. Mary C. Lind
 Mrs. Sheridan R. Link
 Mrs. Molly M. Linneman

Mrs. Anne M. Linton-Paganelli
 Sister Maureen Little
 Mrs. Norma P. Little
 Ms. Catherine Littlefield
 Ms. Faye M. Liu
 Mrs. Nancy A. Lobberegt
 Mrs. Katherine L. Lobdell
 Mr. and Mrs. Victor J. LoBue, Jr.
 Ms. Catherine D. Locke
 Mrs. Helen M. Locke
 Mrs. Nancy Logsdon
 Mrs. Eveleen K. Lopez
 Ms. Julia I. Lopez
 Mrs. Barbara Lopiccolo
 Mrs. Elizabeth K. Lorber
 Mrs. Nancy Lorenz
 Mrs. Nola D. Lorincz
 Mrs. Maureen A. Loselle
 Mrs. Jane H. Lotz
 Ms. Laurie Loughlin
 Ms. Mary Ann Loweth
 Mrs. Rosemary P. Loyacono
 Ms. Ann Marie Lubert
 Ms. Mary Anne Lucio
 Ms. Jane B. Luckhaupt
 Ms. Barbara Luczkowski
 Mrs. Ann Ludwig
 Ms. Gabriella T. Luna
 Ms. Carol H. Lunde
 Mrs. Julia K. Lundgren
 Mr. and Mrs. F. Clark Lydic, Jr.
 Mr. and Mrs. Dennis Lynch
 Mr. and Mrs. Gerald T. Lynch
 Mrs. Helen C. Lynch
 Mrs. Laural G. Lynch
 Mrs. Marilyn D. Lynch
 Ms. Eliza C. Lynn
 Ms. Nancy Lyons
 Mrs. Suzanne S. Lyons
 Mrs. Rose Marie Mabile
 Mrs. Anne F. Mabley



Prayer and Dialogue gathering in White Plains, New York



Prayer and Dialogue gathering in Houston



Prayer and Dialogue gathering in Menlo Park, California



Prayer and Dialogue gathering in Belleville, Illinois

- | | |
|---|---|
| Mr. and Mrs. Theodore J. MacDonald, Jr. | Mrs. Elaine Martin |
| Mr. Robert Mace | Ms. Genevieve C. Martin |
| Mr. Frank J. Mack | Mr. and Mrs. Edward F. Martin |
| Mrs. Linda G. MacKay | Mrs. R. William Martin |
| Mrs. Irene E. Mackenroth | Mrs. Pauline S. Martin |
| Mr. and Mrs. James MacKenzie | Ms. Therese Martin |
| Mr. William W. Mackenzie | Mrs. Jean A. Maryott |
| Mr. and Mrs. Donald S. MacLean | Maryville University, College of Health Professions |
| Mrs. Sara MacMahon | Ms. Ann K. Maschka |
| Ms. Margaret F. MacNeil | Mrs. Elizabeth H. Mast |
| Mr. and Mrs. Arnold R. Madigan | Mrs. Regina Matczak |
| Ms. Hilary D. Magan | Ms. Patricia A. Mathes |
| Mr. and Mrs. John L. Maginn | Ms. Elaine D. Mauriello |
| Dr. and Mrs. Frank D. Maguire | Dr. Margaret N. Maxey |
| Ms. Mary Ann Mahan | Mrs. Sarah Maxwell |
| Ms. Barbara G. Mahany | Ms. Eileen C. Mayer |
| Mr. and Mrs. Kenneth C. Mahieu, Jr. | Ms. Susann A. Mayfield |
| Ms. Carolyn Mahoney | Mr. Paul Mayhew |
| Mr. and Mrs. John R. Mahoney | Ms. Elizabeth P. Maze |
| Ms. Sally T. Mahoney | Mrs. Donna Mazzie |
| Mr. and Mrs. Paul H. Mak | The Mazuccio Family |
| Ms. Michele Malloy | Mr. and Mrs. Andrew McAghon |
| Ms. Eleanor W. Malone | Mrs. Anne V. McAlister |
| Mrs. Mary Maloney | Mr. and Mrs. Lee McAllister |
| Mrs. Marylu Maloney | Mrs. Catherine C. McAllister |
| Mrs. Helen Joanne Manewal | Mrs. Michelle K. McAndrew |
| Miss Mary J. Manhart | Mrs. Jane R. McAniff |
| Manko Gold Katcher Fox LLP | Ms. Mary F. McAuley |
| Mr. and Mrs. Frank Manko | Ms. Geraldine M. McAuliffe |
| Mrs. Patricia L. Manson | Ms. Mairead McAuliffe |
| Mrs. Elizabeth G. Manthey | Ms. Colette L. McBarron |
| Mrs. Virginia D. Manuel | Mrs. Anne F. McCabe |
| Ms. Virgilia F. Mapa | Mr. and Mrs. James McCadden |
| Mrs. Carole M. Marciano | Dr. and Mrs. Robert G. McCairns, Jr. |
| Mr. and Mrs. David Mariani | Mrs. Vita N. McCall |
| Mrs. Mary C. Marino | Mrs. Judith R. McCarren |
| Mr. and Mrs. Matthew P. Marino, Jr. | Mr. and Mrs. James F. McCarthy |
| Mrs. Cynthia D. Marler | Sister Doyle Patricia McCarthy |
| Mr. and Mrs. Adolph J. Marr | Mrs. Mary A. McCarthy |
| Ms. Suzanne Marr | Mrs. Patricia B. McCarthy |
| Mr. and Mrs. Claude Martin | |



Sisters Margaret Munch and Anne-Marie Conn



Many of the Oakwood community participated in Sister Betsy Walsh's class on Dante. Front row: Sisters Lillian Conaghan, Ada Burns, Mary Ann Flynn, Marg Miller. Back row: Sisters Joanne Fitzpatrick, Madeleine Chi, Carol Bialock, Sally Rude (visiting from Halifax), Betsy Walsh, Pat Shaffer, Be Mardel, Nancy Morris and Mary Ann Foy.

Mrs. Shari M. McCarthy
 Mrs. Patricia L. McCaskill
 Sister Margaret McCleary SP
 Ms. Susan C. McClellan
 Ms. Felicity McClenachan
 Mrs. Ann C. McConnachie
 Mrs. Helen B. McConnell
 Ms. Mary R. McDaniel
 Mrs. Joanne S. McDermott
 Mr. Alan S. McDonald
 Mrs. Frances McDonald
 Mrs. Maria J. McDonald
 Mrs. Patricia P. McDonald
 Mr. and Mrs. Jack McDonnell
 Ms. Marcella McDonnell-Stevens
 Mrs. Mary Diane McDonough
 Ms. Judy McDougle
 Dr. Alice McDowell
 Sister M. Martin McEntee CSJ
 Ms. Rosemary McFadden
 Mrs. Wendy McGaffey
 Ms. Karen McGanney
 Mrs. Peggy P. McGarry
 Mrs. Barbara J. McGettigan
 Mr. and Mrs. Timothy J. McGillicuddy
 Mr. James McGilloway
 Mr. and Mrs. Gerald J. McGivern
 Ms. Patty-Jane McGlynn
 Mr. and Mrs. John G. McGoldrick
 Dr. Kathryn E. McGoldrick
 Mrs. Claire M. McGowan
 Mrs. Mary G. McGowan
 Mr. and Mrs. Patrick M. McGrath
 Ms. Regina W. McGrath
 Mr. and Mrs. Kevin J. McGorry
 Mr. and Mrs. John McGuire
 Mrs. Mary D. McGuire
 Ms. Rose P. McHale
 Mrs. Eviling L. McHugh
 Mrs. Margaret K. McHugh
 Mrs. Mary C. McIsaac
 Ms. Bettina McKee

Mrs. Mina C. McKee
 Mr. and Mrs. J. Dorian McKelvy
 Mr. and Mrs. Daniel D. McKenzie
 Mrs. Justine McKnight
 Mr. G. Robert McLaughlin
 Mr. and Mrs. William D. McLaughlin
 Ms. Alice M. McMahan
 Ms. Catherine McMahan
 Mrs. Maureen D. McMahan
 Mr. and Mrs. Joseph McMonigle
 The McMorrow Family
 Mrs. Theresa M. McMorrow
 Mrs. Jane G. McMullen
 Mr. and Mrs. William McNair
 Mrs. June S. McNally
 Mrs. Kathleen S. McNally
 Mrs. Ellen S. McNamara
 Mr. and Mrs. John R. McNeil, III
 Mrs. Karen K. McRae
 Ms. Margaret K. McRaith
 Hon. Maura B. McShane
 Mrs. Margaret Meagher
 Mrs. Luciano Medel
 Ms. Christine M. Meier
 Mrs. Giesela Meijer
 Ms. Susan B. Meiners
 Mrs. Mary Meissner
 Mrs. Sharon C. Melchior
 Mrs. Ann L. Melfi
 Mr. and Mrs. Alvin C. Mellin, Jr.
 Ms. Amanda M. Mengden
 Mrs. Maria M. Menocal
 Mr. and Mrs. Thomas H. Mercier
 Mrs. Maureen Mercier
 Mrs. Allen J. Merkley
 Mrs. Kathy Meunier
 Mrs. Jane G. Meyer
 Ms. Kathryn Meyer
 Mrs. Janet R. Meyering
 Ms. Sharon M. Meyerkamp
 Ms. Allison Michalek
 Ms. Catherine Michalek

Ms. Kristin Michalek
 The Mikita Foundation
 Mrs. Catherine C. Miller
 Mr. and Mrs. George G. Miller
 Ms. Jacquelyn A. Miller
 Dr. and Mrs. Kenneth E. Miller
 Mrs. Joanne L. Miller
 Ms. Kimberly C. Miller
 Mrs. Marlene K. Miller
 Mrs. Nancy P. Miller
 Mr. Timothy O. Miller
 Mr. William H. Miller
 Mr. and Mrs. Philip W. Millians
 Ms. Phoebe Milliken
 Mrs. Patricia A. Minella
 Col. and Mrs. John F. Miniclier
 Mrs. Frances P. Minno
 Ms. Elizabeth Miracky
 Ms. Marisa R. Mizono
 Mr. and Mrs. Raymond Mlecko
 Mr. and Mrs. Mason Mocabee
 Ms. Mary A. Molloy
 Mrs. John E. Mona
 Mrs. Elizabeth H. Monahan
 Mr. and Mrs. James P. Monen
 Moneta Group
 Mrs. Jane E. Monnich
 Dr. and Mrs. Arturo C. Montes
 Mrs. Sarah T. Monteverde
 Dr. and Mrs. David M. Montgomery
 Dr. Catherine Mooney
 Mrs. Sue S. Mooney
 Ms. Anne G. Moore
 Ms. Jane B. Moore
 Mr. William Moore
 Mr. and Mrs. Patrick H. Moorhead
 Ms. Kathleen R. Moran
 Ms. Patricia M. Morehead
 Ms. Joann K. Morey
 Mr. and Mrs. Joseph P. Morey, Jr.
 Mrs. Maura B. Morey
 Mr. and Mrs. Alfred Y. Morgan, II

Ms. Constance M. Morgenson
 Mrs. Deborah C. Moriarty
 Dr. Eileen Moriarty
 Mrs. Mary Frances O'Connor Moriarty
 Mrs. Patricia Moriarty
 Mrs. Shirley Morrin Mulligan
 Mrs. Peter V. C. Morris
 Mrs. Susan S. Morris
 Mrs. Margaret Morrison
 Mrs. Sally M. Morrison
 Mr. and Mrs. Glen E. Morse
 Ms. Adrienne L. Moser
 Mr. and Mrs. Ernest R. Moser
 Mr. Paul M. Moser
 Ms. Anne Mousseau
 Ms. Barbara T. Moynihan
 Ms. Carolyn A. Moynihan
 Mr. and Mrs. Randall T. Mudge
 Ms. Lauren K. Mueller
 Mrs. Barbara J. Muldoon
 Ms. Catherine L. Muldoon
 Judge and Mrs. Salvatore T. Mule
 Ms. Harriet E. Mullaney
 Ms. Regina M. Mullen
 Mrs. Susan L. Mullin
 Mr. John R. Mulroy, Jr.
 Mrs. Maree R. Mulvoy
 Ms. Janet E. Muoio
 Mrs. Anne G. Murphy
 Mrs. Nancy H. Murphy
 Mrs. Noel G. Murphy
 Mrs. Patty R. Murphy
 Mrs. Sara J. Murphy
 Ms. Sharon D. Murphy
 Ms. Susan S. Murphy
 Mr. and Mrs. Alfred Murray
 Ms. Katherine Murtaugh
 Mutual of America Foundation
 Mr. and Mrs. Gregory Myall
 Mrs. Mary H. Myers
 Mrs. Elizabeth J. Myers-Buhite
 Mrs. Juliet F. Nagle

Mrs. Anita Nagler
 Ms. Rowena Naidl
 Ms. Yasuko Naiki
 Ms. Isabel M. Naphin
 Lee E. Nash
 Mrs. M. Sue Nash
 Harleysville Group, Nationwide Insurance
 Ms. Joanne M. Naughton
 Mrs. Jacquelin S. Naunheim
 Mrs. Lori Nawn
 Mrs. Madeleine P. Naylor
 Mrs. Mary B. Nazzaro
 Ms. Mary P. Neal
 Mrs. Rita L. Nederman
 Mr. and Mrs. Brian P. Nedwek
 Drs. Lynne and Harold Neitzschman
 Mrs. Audrey Nelson
 Mrs. Rita Nelson
 Mrs. Teresa F. Nelson
 Mr. and Mrs. Peter J. Neroni
 Dr. Ruth A. Neville
 Mrs. Marivi Nevin
 Mrs. Janet S. Nevling
 Mrs. Mary Newton
 Mrs. Ellen L. Nicholson
 Mrs. Deborah P. Nicklas
 Mrs. Jacqueline T. Niekamp
 Mr. and Mrs. Joseph R. Niemann
 Mrs. Catherine S. Nietzel
 Mrs. Marie-Louise Nix
 Mrs. Marjorie Nolan-Wheatley
 Miss Mary Jane Noonan
 The Norvik Family
 Mrs. Laura Nottoli Bozigian
 Mrs. James G. Nourse
 Mr. James L. Nouss
 Mrs. Rita M. Nugent
 Mrs. Carol A. Nulk
 Mr. and Mrs. Robert W. Nusbickel
 Dr. Theresa N. Obermeyer
 Mrs. Cynthia A. O'Boyle

Ms. Margaret M. O'Brien
 Mrs. Marie D. O'Brien
 Ms. Maureen S. O'Brien
 Mrs. Mary Lee O'Bryan
 Mrs. Mary O'Callaghan
 Mrs. Jane Burke O'Connell
 Ms. Jody O'Connell
 Mrs. Maureen H. O'Connell
 Anonymous
 Ms. Lucille H. O'Connor
 Mrs. Linda Hogan O'Connor
 Ms. Mary Ellen O'Connor
 Mrs. Maureen T. A. O'Connor
 Ms. Jean O'Conor
 Ms. Patricia A. O'Conor
 Mrs. Elizabeth D. Odell
 Mrs. Harry F. Oderman
 Mr. Brian O'Donnell
 Rev. Joseph F. O'Donnell CSC
 Mr. and Mrs. Thomas O'Donnell
 Mr. and Mrs. Dennis M. O'Fallon
 Mrs. Mary E. O'Grady
 Ms. Eugenie J. O'Hagan
 Mrs. Doranne T. O'Hara
 Mrs. Patricia O'Hara
 Mrs. Mary I. O'Herron
 Ms. Sharon L. Ohlms
 Miss Terry J. Okolowich
 Ms. Michelle M. Oliveira
 Mr. and Mrs. Scott P. Olson
 Mrs. Louise F. Olson
 Mrs. Margot M. O'Mara
 Mrs. Sally O'Meallie
 Ms. Christine O'Neal and
 Mr. Ghassan Elmashni
 Mr. and Mrs. William P. O'Neal
 Mr. and Mrs. Jerome H. O'Neil, Jr.
 Ms. Joan D. O'Neil
 Ms. Julie Anne O'Neill
 Ms. Nancy O'Neill
 Ms. Patricia A. O'Neill
 Ms. Lida B. Opalenik



Sisters Mary Bridget Flaherty and Mary Stewart make good use of the new exercise equipment at Oakwood, received as gifts from friends of the Society.



Sister Kinue Matsuzaki, artist and teacher, leads a painting class at Oakwood.



The AASH board for 2015-2017. Front row: President Mary Forsyth, Diane Tymick, Jodie Hannaman Thorne, Rhonda Raffi Meegan. Back row: Shannon Gilroy, Kathleen Feeney, Deborah Newhouse Dunham, Caitie O'Shea. Missing: Kate Deevers Sawyer.



Valerie O'Keefe and Bonnie Stoloski are the behind the scenes assistants at the AASH conference.

- Mr. John R. Openlander
- Mr. and Mrs. Alex D. Opiela, Jr.
- Ms. Magdalena Ople
- Mr. and Mrs. Manuel S. Ople
- Mrs. Mary Ann Orchard
- Mrs. Kathleen B. O'Regan
- Mrs. Laurie A. O'Riordan
- Mrs. Susan G. O'Rourke Hastings
- Mrs. Helen C. O'Rourke
- Mr. and Mrs. John T. O'Rourke
- Mrs. Karen A. O'Rourke
- Mr. and Mrs. Edmund J. Orr
- Ms. Patricia Ortiz
- Mrs. James O'Sullivan
- Ms. Florence K. O'Toole
- Mrs. Mary Lou O'Toole
- Mr. and Mrs. Terrence O'Toole
- Mrs. Kathleen Owen
- Miss Marie L. Owen
- Mrs. Debra Packard
- Dr. John R. Page
- Ms. Eileen M. Pagenkopf
- Mrs. Patrice M. Paglia
- Mrs. Josephine O'Leary Pallasch
- Mr. Ralph S. Palmer
- Mrs. Ragnhild S. Palmieri
- Mr. and Mrs. Frederick Pambianchi
- Mrs. Agatha Pao
- Ms. Norma A. Paolini
- Mrs. Rosemarie N. Papa
- Ms. Lori Parigi
- Dr. and Mrs. George L. Paris
- Sister Yeong-Ja Park
- Mrs. Constance Parker
- Ms. Elena H. Parkhurst
- Mrs. Adelaine Parks
- Ms. Mary Constance Parks
- Mrs. Barbara H. Parrish
- Mrs. Ellen Patterson
- Ms. Emma Patterson
- Mr. J. Michael Patterson
- Mrs. Paula C. Patterson
- Mr. and Mrs. H. James Paugh
- Mrs. Marianne Payne
- Mrs. Dianne K. Pecha
- Mrs. Mary Kay Peck
- Ms. Joan E. Pedersen
- Mrs. Carol L. Pellegrino
- Ms. Titsa F. Pelzman
- Dr. Lucille Pendola
- Mrs. Helen Penton
- Mr. and Mrs. Edward A. Pereles
- Mrs. Jill Perez
- Mrs. Christine Perkins
- Ms. Jacqueline Perno
- Mr. and Mrs. Claiborne Perrilliat, Jr.
- Ms. Kay Perring
- Mr. and Mrs. Owen F. Perron
- Mrs. Karen A. Perrone
- Mrs. Ellen C. Peter
- Mrs. Florence L. Peters
- Mrs. Marilyn A. Peterson
- Mr. and Mrs. George F. Peterson
- Dr. Marcy F. Petrini
- Mrs. Nancy D. Petry
- Mrs. Jane G. Petzold
- Ms. Vivian H. Phan
- Mr. and Mrs. Kevin Phelan
- Ms. Evelyn I. Phelan
- Ms. Mary Ellen Phelan
- Mrs. Mary Jane Phelan
- Ms. Suzanne D. Phelps
- Mr. and Mrs. Ernest C. Phillips
- Mr. Harold Phipps and
Dr. Frances N. Phipps
- Mr. William B. Picotte
- Mrs. Maria F. Pignati
- Ms. Gwen L. Pike *RIP*
- Mrs. Abigail Pizzo
- Dr. and Mrs. Philip A. Pizzo
- Ms. Elizabeth Plater-Zyberk
- Dr. Lauren B. Plumer
- Ms. Danielle Polemeni-Hegarty
- Ms. Mary B. Polite
- Ms. Mary Nan Pollock
- Mr. and Mrs. Kenneth Ponce
- Mrs. Denise H. Pool
- Mrs. Mary Poole
- Mrs. Eileen K. Pope
- Mr. Jack Pope
- Mrs. Christina C. Popp
- Margaret M. Postlewaite, Ph.D.
- Ms. Kathleen M. Potts
- Mrs. Elizabeth Powell
- Mrs. Howard D. Powell
- Mr. and Mrs. John Powell
- Ms. E. Sandra Powers
- Mr. and Mrs. Frank Preusser
- Mrs. Barbara C. Price
- Mrs. Carolyn L. Price
- Ms. Suzanne R. Price
- Mr. Christian Bernhardt Probst
- Ms. Jacqueline Probst
- Mrs. Julie P. Probst
- Mr. Patrick Probst
- Mrs. Maureen F. Prohl
- Prospect Foundation Inc.
- Ms. Andrea Proulx Buinicki
- The Joanne Murphy Purdy Family
- Mr. Stephen Puricelli
- Mrs. Carolyn Puricelli-Boyd
- Mrs. Justine Quain
- Mr. and Mrs. Joseph Quattrone
- Mrs. Judith E. Quest
- Mrs. Camilla Reid Kuhn Quinn
- Mr. Charles Quinn
- Mrs. Mary Joan M. Quinn
- Mr. and Mrs. Shawn H. Quinn
- Ms. Meghan Quinn
- Ms. Mary Ellen Quirk
- Ms. Mary Lee Rafferty
- Mr. and Mrs. Robert J. Raffo
- Ms. Lupe Ramirez

Mr. and Mrs. Robert Ramonda
 Mr. Jesus Ramos
 Mrs. Laura E. M. Rauch
 Miss Lucy D. Rauch
 Ms. Judith A. Reach Condit
 Mr. and Mrs. Robert F. Redmond
 Mr. and Mrs. John T. Reed, Sr.
 Mr. Victor L. Reed
 Lt. General and Mrs. Clifford H. Rees, Jr.
 Ms. Carol M. Regenauer
 Mr. and Mrs. Richard A. Reichle
 Mrs. Miriam M. Reid
 Mrs. Joanne O. Reilly
 Mr. and Mrs. John P. Reilly
 Ms. Madeleine Reilly
 Ms. Anne Reimel
 Mrs. Patricia Reinkemeyer
 Mr. and Mrs. Jerry W. Reinstatler
 Mrs. Patricia Reisert
 Sister Irma Patricia Reiss
 Dr. Kathleen Remlinger
 Mr. and Mrs. Robert A. Rende
 Ms. Laura Renker
 Mr. and Mrs. Edmund Resor
 Ms. Margaret D. Reydel
 Dr. Benedict M. Reynolds
 Mrs. Marjorie A. Reynolds
 Ms. Yvonne Reynolds
 Mrs. Ellen H. Ribaud
 Mr. Canice Timothy Rice, Jr.
 Mr. Edward C. Rice
 Ms. Mary Kathleen Rice
 Ms. Patricia J. Rice
 Mrs. Patricia W. Rice
 Ms. Amy C. Richardson
 Mrs. Dorothy E. Richardson
 Mrs. R.J. Ricossa
 Mrs. Sheila Rider
 Ms. Helen A. Riechmann
 Mrs. Dorothee D. Riederer
 Mrs. Jeannette B. Rigsby

Ms. Mercedes Rio
 Ms. Mary M. Riordan
 Ristorante La Buca
 Rittenhouse Bus Lines Inc.
 Ms. Mary S. Ritter
 Ms. Angela M. Robbiano
 Mrs. Mary Ann Robbiano
 Dr. Martha A. Robbins
 Ms. Dana S. Roberson
 Mr. and Mrs. Steve Roberts
 Ms. Margaret Colleen Roberts
 Mrs. James D. Robins
 Mr. and Mrs. Peter M. Robinson
 Ms. Starr M. Robinson
 Mrs. Mary Roche
 Mrs. Maribeth Rodee
 Ms. Camile L. D. Rodriguez
 Mrs. Marianne Roedersheimer
 Ms. Sally J. Rogers
 H. E. Rohrer, Inc.
 Mrs. Martha Rolland
 Mrs. Jean C. Roman
 Ms. Casey Romero
 Mrs. Mary E. Romson
 Mrs. Mary Ann Roncker
 Mrs. Oren Root
 Mr. Oren Root
 Mr. and Mrs. Frank F. Roselli
 Dr. Susan A. Ross
 Mrs. Dorothy Rotolo
 Mrs. Patricia Rouchier
 Ms. Margaret F. Rouse
 Mrs. Martha M. Rowland
 Mrs. James F. Roy
 Mrs. Irma A. Rozynski
 Mr. and Mrs. Emilio Rubio
 Mr. and Mrs. John Ruckert
 Mr. and Mrs. Paul G. Ruff, III
 Ms. Judith Y. Runnette
 Mr. and Mrs. Danny Ruscitti
 Mrs. Jean S. Russell

Mr. and Mrs. Donald C. Russell
 Mr. and Mrs. Winthrop Rutherford, Jr.
 Mrs. Carol A. Ryan
 Mrs. Helen F. Ryan
 Mrs. Marilyn C. Ryan
 Mrs. Marion A. Ryan
 Ms. Maureen E. Ryan
 Mrs. Nancy Ryan
 Mrs. Nancy D. Ryan
 Ms. Patricia Ryan
 Mr. Paul Rydberg
 Mrs. Helen Rylee
 Ms. Francisca A. Sabadie, Esq.
 Sacred Heart School of Halifax,
 French class
 Mr. and Mrs. Lucian Salazar, Jr.
 Ms. Cecelia Salberg
 Mr. and Mrs. Juan G. Saldarriaga
 Ms. Carolyn J. Salerno
 Mrs. Merrilee H. Salmon
 Mr. Guido J. Salomone, Jr.
 Mrs. Jane M. Samuel
 Mrs. Madeleine B. Sanders
 Dr. Theresa Sanders
 Ms. Desiana P. Sandjaja
 Dr. Elizabeth K. Sands
 Mrs. Susan Sandweg
 Ms. Rebecca H. Sappenfield
 Mrs. Janet Sargent
 Ms. Julie Sargis
 Courtney-Anne Sarpy Fund of Greater
 New Orleans Foundation
 Ms. Fumiko Satoda
 Ms. Jane S. Sattler
 Mrs. Edgar B. Saunders
 Ms. Margaret E. Saunier
 Dr. Carroll Saussy and Mr. Frank Molony
 Ms. Carol A. Scafati
 Mrs. Maria C. Scanga
 Mr. and Mrs. William R. Scanlin
 Mr. and Mrs. Carl T. Scarda



The planning committee for the AASH national conference held in April in Boston, with a theme of *Philanthropy from the Heart*.



Rosalie Ballanca Posselius, videographer, and Barbara Gould Henry, Newton College alumna, presented the *Ruby Bridges Story* during the AASH Conference. The documentary tells the beautiful story of Ruby as a five-year-old integrating the public schools in New Orleans with Barbara as her teacher.



Co-Chairs of the AASH conference, Toni Walsh Curry and Rosemary Stuart Welsh.



One of the many Busy Persons Retreats held throughout the USC Province during the year, at Sacred Heart Schools, Halifax, Nova Scotia, with retreat coordinators: Sisters Norma Heffernan, Donna Dolan, Sally Rude and Shirley Miller.



The National Development Board completed its work of ten years in supporting and guiding the mission advancement office. Seated: Chair Chuck Viator, Shirley Miller, RSCJ; Kathleen Hughes, RSCJ. Back row: Pamela Hayes, Barbara Dawson, RSCJ; Mary Forsyth, Catherine Kinabrew, Alice Burns, consultant, Deacon Larry Vaclavik, Anne Wiehagen, and Tony Soukenik. Missing: Lottchen Wider.

- Ms. Molly O. Schaaf
 Mrs. Maureen H. Schaefer
 Ms. McKenna Schaefer
 Mr. and Mrs. William F. Schaeffer
 Mrs. Mary W. Schaller
 Ms. Elaine C. Schapker
 Mrs. Patricia Schaumberg
 Miss Margaret H. Scheider
 Mrs. Jane Schellings
 Mrs. Patricia C. Schellpfeffer
 Mrs. Carole A. Scherer
 Mr. and Mrs. Frederick W. Scherrer
 Mrs. Janet Schiesl
 Judge and Mrs. Patrick J. Schlitz
 Mrs. Ruth V. Schmedtje
 Ms. Dorothy Schmerbauch
 Mr. and Mrs. Edward W. Schmid, Jr.
 Mrs. Catherine O. Schmidt
 Mrs. Ana Maria Schmit
 Mrs. Juliana M. Schmitt
 Ms. Gertrude E. Schneider
 Ms. Janet Schneider
 Mr. and Mrs. Mark J. Schneider
 Dr. and Mrs. Thomas A. Schneider
 Mr. and Mrs. James E. Schneithorst
 Mrs. Dolores A. Schoeneck
 Mrs. Angela Li Scholz
 Schools of the Sacred Heart,
 San Francisco
 Mr. and Mrs. John J. Schornack
 Judge and Mrs. Patrick M. Schott
 Mr. and Mrs. John Schramm
 Mr. and Mrs. Joseph R. Schrick
 Ms. Elin R. Schriver
 Mr. Frederick J. Schroeder, Jr.
 Mr. and Mrs. Tobin A. Schropp
 Ms. Patricia Schroth
 Ms. Roberta Schueszler
 Mr. Carl W. Schulte
 Ms. Deborah C. Schulz
 Mr. and Mrs. Michael N. Schuster
 Mrs. Bernice D. Schwabacher
 Mrs. Clair C. Schwartz
 Mr. and Mrs. Stephen J. Schwarz
 Mrs. Janet Schwarze
 Dr. Nancy S. Sciales
 Mrs. Jacqueline Sciarriello
 Mrs. Paris K. Scott
 Mrs. Barbara M. Seegul
 Mr. and Mrs. Vincent Seiker
 Mr. and Mrs. William Selde
 Mr. and Mrs. Frank E. Sessions, Jr.
 Mrs. Helene D. Settles
 Ms. Joan M. Sextro
 Mrs. Denise D. Seymour
 Ms. Carolyn R. Shaffer
 Mrs. Teresa L. Shaffer
 Mr. and Mrs. James J. Shallow
 Mrs. Charles J. Shannon
 Mrs. Martha C. Shannon
 Ms. Tara Shannon
 Mrs. Elaine M. Sharer
 Mrs. Lucy Sheata
 Mrs. Sandra Shedlarski
 Mrs. Joan B. Sheehan
 Ms. Patricia D. Sheehan
 Mrs. Margaret C. Sheehy
 Dr. and Mrs. Philip M. Sheridan
 Mr. and Mrs. Leo J. Sheridan, Jr.
 Ms. Mary Ann Sherman
 Dr. Dolores Shoback and
 Dr. John Imboden
 Mr. and Mrs. Thomas C. Shore
 Mrs. Kathleen Short
 Mr. and Mrs. H. Bruce Shreves
 Mrs. Ellen J. Shunk
 Mrs. Mary Clare Siegel
 Mrs. Carol L. Simmons
 Mrs. Adele Simon
 Mrs. Etienne E. Simon
 Ms. Ann Simonson
 Mrs. Janet Simonson
 Mr. Jerry Simonson
 Ms. Katherine R. Simpson
 Mr. and Mrs. Daniel L. Sinclair
 Ms. Laura Sinclair
 Mrs. Isabel J. Singletary
 Mrs. Margaret Sippel
 Mrs. Patricia A. Skidmore
 Mrs. Abigail P. Slattery
 Mrs. Joan M. Slattery
 Mrs. Judith L. Sliney
 Ms. Caroline A. Smith
 Ret. Col. and Mrs. James J. Smith
 Ms. Corinne Smith
 Mr. Craig M. Smith
 Dr. and Mrs. Harold F. Smith, Jr.
 Ms. J. Cappie Smith *RIP*
 Ms. Jane W. Smith
 Ms. Joan F. Smith
 Mrs. James F. Smith
 Mr. and Mrs. Eugene Smith
 Mrs. Maureen A. Smith
 Mr. Peter C. Smith
 Mr. and Mrs. John J. Smith
 Ms. Sandra A. Smith
 Mrs. Suzanne R. Smith
 Ms. Teruko Smith
 Mr. William R. Smith
 Ms. Joan M. Smyth
 Mr. and Mrs. Tom G. Smyth
 Mr. Francis H. Snyder
 Mrs. Pamela M. Snyder
 Mrs. Patricia A. Snyder
 Mr. John Snyders
 Mrs. Karen M. Soares
 Mr. and Mrs. John A. Sobrato
 Mr. and Mrs. Donald A. Solomon
 Ms. Marie D. Somers
 Dr. Christine D. Sommer
 Mrs. Susan L. Sondag
 Mrs. Joan M. Sonnier
 The Gordon Soso Family
 Ms. Therese A. Soule
 Mrs. Mary J. Sova
 Mrs. Mary Spanberger

Mr. and Mrs. Robert Sparacino
 Mrs. Tiffany K. Spinella
 Mrs. Denise D. Sprague
 Ms. Rachel Sroufe
 Mr. and Mrs. Kenneth W. Staab
 Mr. and Mrs. John J. Stack
 Mrs. Ruth M. Stanton
 Mr. Vincent P. Stanton
 Ms. Mary Clare Starshak
 Mrs. Kimberly A. Staten
 Rev. Thomas R. Statt
 Ms. Marie M. Stebbins
 Mr. and Mrs. Harry W. Steele
 Mrs. Kathleen Steele
 Ms. Margaret Steele
 Ms. Rina Stefani
 Mr. John L. Stein
 Ms. Marguerite J. Stejskal
 Mrs. Cynthia E. Stenger
 The Stensby Family
 Ms. Marjorie H. Stephan
 Mrs. Mary Ann Stephen
 Mr. and Mrs. Jon T. Stephens
 Dr. and Mrs. John G. Steuterman, Jr.
 Mr. and Mrs. Richard G. Stevens
 Mrs. Jacqueline L. Stokes
 Mrs. Mary N. Stokes
 Dr. and Mrs. Joseph F. Dorsey
 Mrs. Linda Stone
 Mrs. Jean D. Stout
 Dr. Sara E. Strattan
 Ms. Nancy Stretch
 Mrs. Annabel Strife
 Ms. Dawn R. Stringfield
 Mrs. Constance O. Strong
 Ms. Catherine T. A. Struve
 Mr. and Mrs. William C. Stude, Jr.
 Mr. and Mrs. Ralph A. Sturges, III
 Mrs. Pamela W. Styrsky
 Mrs. Patricia A. Sugrue
 Ms. Barbara A. Sullivan
 Ms. Helen M. Sullivan

Mr. Joseph G. Sullivan
 Mr. and Mrs. Michael Sullivan
 Mrs. Katherine S. Sullivan
 Ms. Mary M. Sullivan
 Dr. Michael E. Sullivan
 Ms. Patricia Ann Sullivan
 Mrs. Victoria Sullivan
 Ms. Jane M. Sulze
 Ms. Dolores A. Supper
 Ms. Maureen Sutton
 Mrs. Eileen W. Sutula
 Mrs. Francis C. Svoboda
 Mrs. Donald E. Swanson
 Mrs. Catherine C. Swanstrom
 Mrs. John J. Sweeney
 Mrs. Nancy Sweeney
 Ms. Patricia H. Swenson
 Dr. Harriet K. Switzer and
 Dr. David L. Cronin
 Mrs. Rita D. Tachis
 Mrs. Carolyn Talcott
 Mr. and Mrs. Patrick A. Talley, Jr.
 Ms. Therese W. Tamaro
 Ms. Monica Tanner
 Ms. Mary Lou Targy
 Mrs. Ann Bourke Tasker
 Ms. Kathleen H. Taylor
 Ms. Margaret A. Taylor and
 Mr. Floyd Gonella
 Mrs. Marguerite Taylor
 Mrs. Sharon M. Tebbe
 Anonymous
 Mrs. Yvonne L. Tellam
 Mrs. Carol W. Temme
 Ms. Sally L. Teppert
 Mrs. Kimm Terpening
 Mrs. Carolyn K. Teshima and
 Dr. Edwin Hon
 Mrs. Barbara A. Thach
 Ms. Margaret A. Thibodaux
 Ms. Bernadette J. Thibodeau
 Mrs. Linda Thibodeau

Mrs. Nancy Thibodeau
 Rev. William Thiele
 Mrs. Ellen F. Thoma
 The Jack Thomas Family
 Ms. Ruth H. Thomas
 Mrs. Susan D. Thomas
 Mr. and Mrs. Robert E. Thomas
 Ms. Catherine M. Thompson
 Dr. and Mrs. Ronald W. Thompson
 Mrs. Mary T. Thompson
 Ms. Nancy L. Thomson
 Mrs. Joan L. Thro
 Mr. Jules M. Thro
 Mrs. Ellen K. Tierney
 Mrs. Susan Tierney
 Mr. and Mrs. Frank P. Tighe, Jr.
 Mrs. Nell C. Tilton
 Ms. Laura A. Tindall
 Mrs. Susan M. Tindall
 Mrs. Frances Titterton
 Mr. and Mrs. Gerald C. Tobin
 Mr. and Mrs. Kevin Tollefson
 Ms. Elizabeth S. Tomlinson
 Mrs. Elizabeth W. Tooley
 Mr. and Mrs. Laurent J. Torno, Jr.
 Mrs. Elizabeth R. Torphy
 Mr. and Mrs. Bill Tortora
 Mr. Ellis Toups, Sr.
 Tour & Cruise Travel
 Transit Works
 Mrs. Mary P. Trott
 Ms. Mary Ellen Troy
 Mr. Paul Tucci
 Ms. Lesley E. Tucker
 Mrs. Mary Kay Tucker
 Ms. Marcia M. Tufarolo
 Turtle Top
 Mr. and Mrs. Jack A. Tweedy
 Ms. Sarah B. Tyler
 Mrs. Marianne Tyrrell
 Mrs. Diane M. Ulrich
 Mrs. Lorraine I. Urban



Sister Ama Serrano of Cuba and Danielle Dunleavy, Director of Finance and Business Affairs, Canada.



Connie Solari, author and Sacred Heart educator, at the *Network Roots and Wings* conference, St. Charles.



Michael Baber, interim head of Sacred Heart Schools, Grand Coteau, with Sister Fran Gimber, at the *Network Roots and Wings* conference.



Former provincials gather at Oakwood at the time of Superior General Kathleen Conan's visit: Sisters Anne-Marie Conn (Canada Province), Mary (Be) Mardel, (California Province), Margaret Mary Miller (Chicago Province), Paula Toner (United States Province), Kathleen Conan (United State Province), Clare Pratt (former Superior General of the Society and provincial of the Washington Province), Barbara Dawson, (United States Province and now provincial of the United States-Canada Province), Rosemary Bearss (United States Province), Ann Conroy (New York Province).



Caritas community in Halifax. Seated: Sisters Mildred Peterkin, Sally Mahar, Merle Pedersen. Standing: Sisters Shelagh Deegan, Anne Wachter, Headmistress of Sacred Heart School, Halifax, Anne Leonard, Madeline Thibeau, Beverley McNamara, Therese Chu.

- Mrs. Mary Ann Valentino
 Mrs. Jeanne M. Vallimont
 Ms. Agnes C. Van Antwerp
 Dr. Dacia Van Antwerp
 Ms. Kathleen M. Van de Walle
 Mrs. Mary M. Van Dersarl
 Mrs. Catherine Van Kampen
 Mrs. Janet M. Vanden
 Mrs. Mary W. Vanderwarker
 Mrs. John T. Vandover, Jr.
 Mr. and Mrs. Gary P. Vannelli
 Ms. Frances Vatterott
 Mrs. Marjorie M. Vatterott
 Mr. and Mrs. Douglas P. VauDell
 Mr. and Mrs. Paul A. Vermylen
 Mrs. Virginia Vessa-McLaughlin
 Mr. and Mrs. Stafford J. Viator
 Mr. and Mrs. Gary J. Vick
 Mr. and Mrs. Peter Vieira
 Mrs. Jacqueline M. Vigilante
 Mrs. Mary K. Vimmerstedt
 Mr. J. Malcolm Visbal
 Ms. Ann E. Vogel
 Mrs. Constance A. Vogelgesang
 Dr. and Mrs. Thomas N. Volle
 W.L. Roenigk, Inc.
 Ms. Dorothy C. Wackerman
 Mr. and Mrs. H. Garrett Wada
 Ms. Mary T. Wade
 Mrs. Marjorie Wagstaffe
 Mrs. Anita B. Walker
 Mrs. Anne-Marie Walker
 Mr. and Mrs. Jerry A. Walker, Jr.
 Ms. Katherine D. Waller
 Mr. Brian A. Wallingford
 Ms. Margaret A. Wallingford
 Mrs. Catherine J. Walsh
 Ms. Joy C. Walsh and
 Mr. Joseph W. Cline
 Mrs. Marguerite J. Walsh *RIP*
 Mrs. Mary E. Walsh
 Mrs. Rita M. Walter
 Mrs. Ellen W. Walther
 Ms. Colleen R. Walton
 Mrs. Lucille D. Wang
 Mrs. Carol M. Ward
 Ms. Kim S. Wayne
 Mrs. Rosalie V. Weaver
 Mrs. Constance M. Weber
 Mrs. Ninette P. Webster
 Mr. and Mrs. Paul J. Wehner
 Ms. Melissa Weiksna and
 Dr. Jeffrey Caruso
 Mrs. Suzanne D. Weiss
 Mrs. Therese J. Welge
 Mrs. Patricia R. Wells
 Ms. Mary K. Wentker
 Mrs. Mary Elizabeth Westhoff
 Mrs. Cynthia C. Whalen
 Ms. Susan Whalen
 Mrs. Lynn K. Wharton
 Dr. Lisa M. Wheatley
 Mr. and Mrs. Thomas J. Wheeler
 Ms. Erin R. Wheeler
 Ms. Doloretta S. White
 Ms. Jeanne White
 Mrs. Margaret M. White
 Mrs. Mary Clare P. White
 Mrs. Marc A. White
 Ms. Deborah J. Whitman
 Mr. and Mrs. Stephen V. Whitman
 Mrs. Karen M. Whittler
 Mrs. Moye M. Wicks, III
 Ms. Donna S. Widmer
 Ms. Jean Wiegel
 Mr. and Mrs. Paul F. Wiehagen
 Ms. Patricia J. Wieser and
 Mr. Gregg Wielage
 Mr. Charles Wiggins
 Mr. and Mrs. Barry F. Wiksten
 Mr. Nathan T. Wilburn
 Dr. Suzanne D. Wilcox
 Mrs. Eloise W. Wilding
 Mrs. Marguerite S. Wilkie
 Ms. Nancy M. Wilkinson
 Mrs. Anne A. Will
 Mrs. Frances F. Williams
 Mr. Jon W. Williams
 Mrs. Nancy L. Williams
 Ms. Suzanne A. Williams
 Mr. and Mrs. W. Brian Williams
 Mr. and Mrs. Raymond Williamson, Jr.
 Mrs. Patricia K. Willis
 Ms. Vivian M. Wills
 Mrs. Marie C. Wilson
 Mr. and Mrs. James Wilson
 Mrs. Sally D. Wilson
 Dr. and Mrs. Warren J. Wimmer
 Mrs. Jean K. Winkeljohn
 Mrs. Karen A. Winter
 Mr. and Mrs. Michael Witiw
 Ms. Mary J. Wogan *RIP*
 Ms. Jessy L. Wolfe
 Mrs. Marie K. Wolfe
 Mrs. Carol A. Wolfington
 Ms. Lynn W. Wolfington
 Mr. and Mrs. Bruce Wombough
 Mr. and Mrs. Brent Wood
 Mrs. Fidelma C. Woodley
 Mr. and Mrs. Douglas Woodstock
 Mrs. Barbara J. Wood-Prince
 Mrs. Patricia A. Woods
 Ms. Elizabeth E. Wright
 Mrs. Lucy Wright
 Mr. and Mrs. Frederick Wrightson
 Mrs. Dorothy S. Wurzelbacher
 Ms. Irene Wüst
 Mrs. Peggy E. Yingling
 Ms. Chunmei Yoe
 Ms. Assunta Young
 Mr. and Mrs. Edwin A. Young
 Mrs. Paula R. Young
 Ms. Ruth K. Young
 Ms. Sylvia J. Young
 Mr. and Mrs. Alfred F. Zabinski
 Mrs. Ellen G. Zaccardelli

Ms. Alessandra Zaldivar-Giuffredi
 Mrs. Carol A. Zarek
 Ms. Nenita B. Zarilla
 Mrs. Kelly E. Zastrow
 Mrs. Eileen Zazzali
 Mr. and Mrs. Jonathan Zeschin
 Ms. Maria-Louise Zeydel
 Ms. Devi K. Zinzuvadia
 Mr. and Mrs. George Zizka
 Mrs. Mary T. Zodrow
 Mrs. Mary Jacqueline Zuber
 Dr. Theresa M. Zuccheri-Scocca

♦ *In Honor of*

James and Catherine Arno
 Ms. Dolores A. Supper

Elaine Barry
 Mr. and Mrs. Norman J. Blears

Jean Bartunek, RSCJ
 Mr. David E. Berlew

Jean Bautz, RSCJ
 Mr. and Mrs. Clarence J. Brinkman
 Mrs. Joanne O. Hynek

Angela Bayo, RSCJ
 Mrs. Lovella Beres
 Mrs. Jane Hebert
 Ms. Catherine Littlefield
 Mr. and Mrs. Thomas J. Wheeler
 Mr. Charles Wiggins

Rosemary Bears, RSCJ
 Mrs. Berta Canto

Carol Bialock, RSCJ
 Ms. Karen E. Emge

Mary Blish, RSCJ
 Mrs. Margaret Bradley
 Mr. and Mrs. James G. Caire
 Mrs. Rosina M. Carter

Ms. R. Ann Ford
 Mrs. Jeanne M. Vallimont

Beatrice Brennan, RSCJ
 Mrs. Ludmila Schwarzenberg Bidwell
 Mrs. Christine H. Coughlan
 Mrs. Oren Root
 Ms. Sally L. Teppert

Judith Brown, RSCJ
 Mrs. Carol H. Luders
 Mrs. Anne G. Murphy
 Mrs. Mary Joan M. Quinn

Lisa Buscher, RSCJ
 Sister M. Martin McEntee, CSJ

Adele Caire, RSCJ
 Ms. Julie P. Burns
 Ms. Karen E. Emge
 Mr. and Mrs. Charles Fitch
 Mrs. Darlene Henson
 Ms. Mary Ann Loweth

Annice Callahan, RSCJ
 Judge and Mrs. Patrick M. Schott

Muriel Cameron, RSCJ
 Mr. Walter Ernest

Carol Campbell, RSCJ
 Mrs. Margaret S. Collins
 Mrs. Elaine Martin
 Mrs. Jean A. Maryott
 Mr. and Mrs. Patrick H. Moorhead
 Mr. and Mrs. John Schornack
 Mrs. Donald E. Swanson
 Mrs. Yvonne L. Tellam
 Mrs. Kelly E. Zastrow

Constance Campbell, RSCJ RIP
 Mrs. Nan M. Carter
 Dr. Joan Liddell
 Mrs. Elaine Martin
 Mrs. Sharon C. Melchior
 Mrs. Yvonne L. Tellam

Margaret M. Canty, RSCJ
 Mark, Christine and Lisabeth Kelly

Eleanor Carr, RSCJ
 Ms. Francesca Eastman
 Mrs. Mary C. Finnegan
 Mrs. Juliana F. Gilheany
 Mrs. Katherine L. Lobdell

Robert Casey
 Mrs. M. Virginia Waterman-Casey

Katherine Cassidy, RSCJ
 Ms. Kathleen Larson
 Mr. and Mrs. Patrick M. McGrath

Mollie F. Chalkeley
 Ms. Natalie C. Mirkovitch

Rose Chen, RSCJ
 Mr. Francis S. Chen

Mary T. Clark, RSCJ RIP
 Dr. Kathryn E. McGoldrick

Lillian Conaghan, RSCJ
 Mrs. Patricia Casper
 Mr. and Mrs. Charles Fitch
 Mrs. Irene E. Mackenroth
 Ms. Michele Malloy

Julia Connett
 Mrs. Melinda P. Galaher

Ann M. Conroy, RSCJ
 Mrs. Teresa Devincenzi
 Dr. and Mrs. Wayne Fung
 Mr. William H. Miller
 Mr. and Mrs. Richard M. Raymond
 Ms. Devi K. Zinzuvadia

Suzanne Cooke, RSCJ
 Mrs. Elizabeth R. Torphy

*Country Day School of the Sacred Heart
 Faculty and Staff*
 Mrs. Mary Katharine Green



Sister Jean Bartunek, Robert A. and Evelyn J. Ferris chair and professor of Management and Organization, Boston College, with four of her students: Stephanie Creary, Andrea Tunarosa, Boram Do and Erica Steckler.



Sister Lucy Toror, Uganda-Kenya Province, completed her studies at New Rochelle College, New York, and returned to her province. Pictured with her New York community on graduation day, front row: Sisters Reyna Gonzales, Maisie Lufkin, Regina Shin; back row: Sisters Judy Garson, Eleanor Fox, Gwen Hoeffel, Helen O'Regan and Silvia Villanueva.



In December many of those responsible for articulating the mission of the Society gathered for a Mission Communications Focus Group, to plan ways to work together more cohesively. Front row: Diane Roche, RSCJ; Mary Pat White, RSCJ. Second row: Therese Meyerhoff, Carol Haggarty, RSCJ; Sheila Hammond, RSCJ; Kathleen Hughes, RSCJ; Shirley Miller, RSCJ. Back row: Madeleine Reilly, Jane Steinfels, Jan Dunn, RSCJ; Paul Parker, Ann Taylor, RSCJ; Suzanne Cooke, RSCJ; Mary Forsyth, Imma De Stefanis, RSCJ; and Kathy McGrath, RSCJ.



Sisters Annice Callahan and Fran Tobin



Sisters Norma Heffernan and Sheila Smith

Martha Curry, RSCJ
Mrs. Sally N. Bredemann

Barbara Dawson, RSCJ
The W. C. Coale Family

Wendy Delery-Hills
Mrs. Pamela M. Snyder

Virginia Demehy, RSCJ
Mrs. Nancy Grote

Caroline Desaulniers, RSCJ
Mrs. Catherine C. McAllister

Madeleine S. Desloge, RSCJ
Mrs. Patricia Cooper
Mrs. Nancy Grote
Mrs. Suzanne D. Wiess

Carol DeZutti
Mr. and Mrs. Norman J. Blears

Marisel A. Diaz
Mr. and Mrs. Gonzalo A. Diaz

Kathleen Dolan, RSCJ
Mrs. Patricia C. Ellingwood
Ms. Eleanor A. Jekot

Ruth Dowd, RSCJ
Mrs. Ludmila Schwarzenberg Bidwell
Mrs. Jane Hebert
Mrs. Carol M. Kane

Doyle family members, living and deceased
Miss Anne M. Doyle

Anne Dyer, RSCJ
Dr. and Mrs. Richard A. Knazek

Maureen Elliott
Mrs. Pamela M. Snyder

Margaret Erhart
Mrs. Patricia Casper

Anna Eshoo
Ms. Margaret A. Taylor and
Mr. Floyd Gonella

*Faculty at Convent of the Sacred Heart,
Greenwich, CT*
Mr. and Mrs. Daniel E. Holmes

Joanne Fitzpatrick, RSCJ
Mrs. Madeleine B. Sanders

Mary Ann Flynn, RSCJ
Mrs. Patricia Casper
Mrs. Cathy Duane
Mrs. Barbara A. Eagleton
Mr. and Mrs. Charles Fitch
Mr. and Mrs. John Gardner
Mrs. Nancy Grote
Mr. and Mrs. Thomas P. Lawton

Mary Ann Foy, RSCJ
Mrs. Patricia Casper
Ms. Ann R. Healey
Mrs. Mary Ann Roncker

Joan Gannon, RSCJ
Ms. Sandy Chellel
Rose Valley Partners

Felisa Garcia
Mrs. Sarah A. Anderson

Mary Louise Gavan, RSCJ
Mrs. Jeanne Burke O'Fallon

Nancy Gbio, RSCJ
Ms. Marie Bone

Frances Gimber, RSCJ
Ms. Frances S. Glasser
Ms. Katherine R. Simpson

Maureen Glavin, RSCJ
Mr. and Mrs. Steven H. Hippe
Moneta Group
Network of Sacred Heart Schools

Carol Haggarty, RSCJ
Ms. Carol M. Eggers and
Mr. Brian Haynsworth

Sheila Haggas
Dr. and Mrs. Richard G. Belatti, Jr.

Sheila Hammond, RSCJ
Patricia C. Ellingwood

Pat Hardy's birthday, Bloomfield Hills
Virginia Antakli
Rosemary Bannon
Joan Gaston
Joyce Koreman
Carol Lee Markley
Carol Shaya
Josie Sosa
Ann Spina
Katy Valenti

Irene Herbst, RSCJ
Ms. Marie Bone

Gwen Hoeffel, RSCJ
Ms. Susan A. Hoeffel

Ellen Hoffman, RSCJ RIP
Mrs. Teresa Devincenzi
Dr. Rita J. Flynn
Dr. and Mrs. Wayne Fung
Mr. and Mrs. John P. Hayes
Mr. and Mrs. Mark D. Innes
Ms. Christine Linnenbach
The Mazzucco Family

Margaret Mary Hoffman, RSCJ
Mr. and Mrs. Ronald D. Hoffman

Dorothy Holmes
Mrs. Kathleen M. Jewett

Kathleen Hughes, RSCJ
Network of Sacred Heart Schools
Mrs. Catherine C. Swanstrom

Constance G. Hynes
Mrs. Dorothy H. Carolin
Mrs. Roseanne Gallagher
Mrs. Helene J. Griffin
Ms. Susan S. Murphy
Mrs. Doranne T. O'Hara
Mr. and Mrs. Frederick Pambianchi

Ms. Patricia D. Sheehan
 Ms. J. Cappie Smith *RIP*
 Ms. Mary T. Wade

Mary Louise Jenkins, RSCJ
 Mrs. Sarah A. Anderson
 Ms. Frances A. Asam
 Mrs. Margaret King Fitzpatrick
 Ms. Katherine R. Simpson

Sharon Karam, RSCJ
 Mrs. Eileen Ford
 Ms. Laura Sinclair

Mildred Barbara Kearins, RSCJ
 Mrs. Mary Joan M. Quinn

Nancy Kehoe, RSCJ
 Mr. Vincent P. Stanton

Maura Keleher, RSCJ
 Mr. and Mrs. Thomas J. Wheeler

Amy Kindstedt
 Mr. and Mrs. Frank E. Sessions, Jr.

Joan Kirby, RSCJ RIP
 Mr. and Mrs. George Buckland
 Ms. Louise M. Dagit
 Mr. and Mrs. Timothy D. Fagin

Lorraine Lawrence, RSCJ
 Mrs. Rita M. Barichievich
 Ms. Mary P. Neal
 Ms. Teruko Smith

Barbara Lopiccolo
 Mrs. Pamela M. Snyder

Justine Lyons, RSCJ
 Dr. and Mrs. Wayne Fung
 Mrs. Jean D. Stout

Joan Magnetti, RSCJ
 Mrs. Kathleen Johansen-Stagg

Claire Mahaney, RSCJ
 Mrs. M. Virginia Waterman-Casey

Mary "Be" Mardel, RSCJ
 Mrs. Sandra H. Bley
 Mr. Guy V. Burnett
 Dr. and Mrs. Wayne Fung
 Mr. and Mrs. John P. Hayes
 Ms. Carolyn S. Henry
 Mr. and Mrs. Mark D. Innes
 Mr. and Mrs. Donald S. MacLean
 Dr. and Mrs. John R. McNeel
 Mr. William H. Miller
 Ms. Marisa R. Mizono
 Dr. Eileen Moriarty
 Dr. Moyra Siu Moy
 Mr. and Mrs. Richard M. Raymond
 Mrs. Jean C. Roman
 Mrs. Lorraine I. Urban

Kinue Matsuzaki, RSCJ
 Alumnae/i of the Sacred Heart,
 Bloomfield Hills

Susan Maxwell, RSCJ
 Mrs. Kathleen Johansen-Stagg

Mary Helen McComas, RSCJ
 Mrs. Sarah A. Anderson
 Mrs. Allison C. DiNardo
 Mr. Paul Mayhew

Mathilde McDuffie, RSCJ
 Mrs. Jessica Clark
 Ms. Mercedes Rio
 Dr. and Mrs. Thomas N. Volle

Catherine McMahon, RSCJ RIP
 Mrs. Rosemary M. Laughlin
 Mrs. Elaine Martin
 Mrs. Jean A. Maryott
 Mrs. Donald E. Swanson

Faine McMullen, RSCJ
 Ms. Christine Bassett
 Ms. Elizabeth L. Collins
 Mrs. Mary Diane McDonough
 Ms. Mary Ellen Troy

Jan McNabb, RSCJ
 Mr. and Mrs. William F. Anhut
 Mr. and Mrs. Clarence J. Brinkman

Cecile Meijer, RSCJ
 Network of Sacred Heart Schools

Jorge Menocal
 Mrs. Maria M. Menocal

Margaret Mary Miller, RSCJ RIP
 Mrs. Elizabeth Leach
 Sandy and Arnold Madigan
 Mrs. Donald E. Swanson

Shirley A. Miller, RSCJ
 Alumnae/i of the Sacred Heart,
 Duchesne, Omaha
 Mr. Mathias and Mrs. Cristal Backer
 Mrs. Mary Knott
 Ms. Eliza C. Lynn
 Sister Yeong-Ja Park
 Mrs. Shawn H. Sweeney
 Mr. and Mrs. Paul F. Wiehagen

Nancy Morris, RSCJ
 Mr. and Mrs. Mark D. Innes
 Ms. Anne M. Morris
 Mrs. Kathleen Steele

Juliet Mousseau, RSCJ
 Network of Sacred Heart Schools

Carolyn Mouton, RSCJ
 Mrs. Shirley B. Griffin

Margaret Mary Munch, RSCJ
 Network of Sacred Heart Schools

Mary Munch, RSCJ RIP
 Ms. Teruko Smith

Frances Murphy, RSCJ
 Ms. Kathleen H. Taylor

Nancy Murphy, RSCJ
 Mr. and Mrs. Daniel E. Holmes



Mary Pat White, RSCJ with Patty Creedon, RSM, director of Oakwood



Sisters Marcia O'Dea and Margherita (Magee) Cappelli



Participants in the Border Witness Program, co-sponsored by ARISE and the Stuart Center. Front row: Graciela Buenfil, RSCJ; Rosemarie Quilter, RSCJ; Kristi Laughlin (Associate), Imma De Stefanis, RSCJ; Reyna González, RSCJ; Ramona Casa (ARISE), Eva Soto (ARISE), Josefina Montalvo, RSCJ; Socorro Martinez, RSCJ; Trudy Considine, RSCJ; Diane Roche, RSCJ; Anne Heekin (Don Bosco Workers), Doretta Cornell, RDC.



The Stuart Center presented its annual Catherine Collins Micah Awards to Don Bosco Workers, Inc.: Gonzalo Cruz, Perla Zuniga, Luz Gonzales, Anne Heekin (Director) and Mary Bourdon, RJM, headmistress of Washington Schools for Girls; and Lauren Dumas, 2015 graduate of the Academy of the Sacred Heart, Bloomfield Hills, Michigan.



Sisters Mary Loretta Busch and Emma Fernández

Patricia Murphy, RSCJ
Mr. and Mrs. Richard F. Frisch

Dorothy A. Murray, RSCJ
Mr. and Mrs. George Buckland
Mrs. Margaret Meagher
Mrs. Anne G. Murphy
Mrs. Mary Joan M. Quinn

Lucie Nordmann, RSCJ
Mrs. Ellen L. Nicholson

Jeanne O. O'Connor
Ms. Mary S. Ritter

Gail O'Donnell, RSCJ
Mrs. Kathleen Hirsch

Leontine O'Gorman, RSCJ
Mr. and Mrs. William F. Anhut
Mr. Charles Wiggins

Karen Olson, RSCJ
Ms. Katherine R. Simpson

Nance O'Neil, RSCJ
Mark O'Neil and Family

Carolyn Osiek, RSCJ
Mr. Carl W. Schulte

Mary Ann Paris
Mrs. Mary Kay Peck

Yeong-Ja Park, RSCJ
Alumnae/i of the Sacred Heart,
Bloomfield Hills

Colin Parks-Fried
Ms. Mary Constance Parks

Gertrude Patch, RSCJ RIP
Anonymous
Ms. Alexandra C. Crosetti
Mrs. Norma P. Little

Margaret Phelan, RSCJ
Mark, Christine and Lisabeth Kelly

Monique Pieper
Ms. Mary Constance Parks

Clare Pratt, RSCJ
Mr. and Mrs. Mark D. Innes
Dr. Moyra Siu Moy

Rose Marie Quilter, RSCJ
Mrs. Virginia D. Manuel

Barbara Quinn, RSCJ
Network of Sacred Heart Schools

Kathryn E. Rapier
Mr. Michael J. Rapier

Irma P. Reiss, RSCJ
Mrs. Dorothy M. King
Mrs. Jane R. McAniff

Religious of the Sacred Heart
Mrs. Patricia E. Allen

Ms. Cheryl A. Bodine-Reed
Dr. and Mrs. Wayne Fung
Mrs. James E. Heile
Mr. and Mrs. Mark D. Innes
Mrs. Joan Kramer
Mrs. Ann T. Kullman
Patsy and Woods Martin
Mrs. Helen B. McConnell
Mrs. Dorothee D. Riederer
Ms. Nancy Stretch
Mrs. Mary Clare P. White

Religious of the Sacred Heart, Atherton, CA
Ms. Christine O'Neal and
Mr. Ghassan Elmashni

*Religious of the Sacred Heart who taught
at Elmhurst*
Mrs. Deborah C. Moriarty

*Religious of the Sacred Heart who taught
at Kenwood and Manhattanville*
Ms. Regina W. McGrath

*Religious of the Sacred Heart at
Manhattanville in the 1960's*
Mr. and Mrs. Dennis Lynch

*Religious of the Sacred Heart at Sophie
Barat House*
Mr. and Mrs. Gregory Kahn

*Religious of the Sacred Heart, Washington,
D.C. area*
Ms. Katherine R. Simpson

Jane Tobin Rice RIP
Mrs. Anne T. Shapleigh

Mary Patricia Rives, RSCJ
Mrs. Patricia Casper
Mrs. Sally C. Coleman

Judith Roach, RSCJ
Ms. Eleanor A. Jekot

Barbara Rogers, RSCJ
Mr. William B. Picotte

Rosemary T. Roney, RSCJ
Mr. and Mrs. Clarence J. Brinkman
Mrs. Suzanne Jehle

Martha Roughan, RSCJ
Mr. and Mrs. Norman J. Blears

Ann Ryan, RSCJ
Ms. Molly O. Schaaf

Mary Pat Ryan, RSCJ
Mrs. Sara J. Murphy

Maureen E. Ryan
Ms. Frances A. Asam

Sacred Heart education
Mrs. James E. Heile

*Sacred Heart Schools, Sheridan Road,
Class of 1950*
Mrs. Helen M. K. Brennan

Marielena Saldarriaga
Mr. and Mrs. Juan G. Saldarriaga

San Francisco College for Women/Lone Mountain, CA, Class of 1956
Mrs. Susan S. Morris

Schools of the Sacred Heart, San Francisco, Class of 1964
Ms. Carolyn Mahoney

Mary Schumacher, RSCJ
Ms. Kathryn Jorgensen
Mrs. Joanne S. McDermott

Virginia Schumann, RSCJ
Ms. Rose P. McHale
Mrs. Deborah C. Moriarty

Catherine Seiker, RSCJ
Mrs. Donald E. Swanson

Elizabeth Shearman, RSCJ
Mrs. Allison C. DiNardo
Mrs. Mary Joan M. Quinn

Rosemary Sheehan, RSCJ
Mrs. Kathleen Johansen-Stagg

Leinani Cecilia Shinoda
Richard H. and Martha M. Rowland

Carolyn Sij, RSCJ
Ms. Carolyn J. Salerno

Ann Smith, RSCJ
Dr. Barbara J. Judge

Lucretia Smith
Mrs. Eleanor G. Fenton

Sarah "Sally" Stephens, RSCJ
Ms. Madeleine Reilly

Stuart Country Day School of the Sacred Heart, Princeton, NJ
Network of Sacred Heart Schools

Mary Jane Sullivan, RSCJ
Mrs. Rosemary S. Dwyer

Theresa Teshima, RSCJ
Mrs. Carolyn K. Teshima and
Dr. Edwin Hon

Mary Patricia Thro, RSCJ RIP
Mrs. Patricia Cooper
Ms. Margaret H. Gebhard

Esther Ann Whalen, RSCJ
Ms. Claire-Marie Hart
Mrs. Joanne S. McDermott
Ms. Rose P. McHale
Mrs. Deborah C. Moriarty

Marie-Louise Wolfington, RSCJ
885
Ms. Anne Reimel

Annette Zipple, RSCJ
Ms. Germaine LaBerge

◆ *In Memory of*

Kathleen McCaffrey Adar
Alison Adams

Dolores Alfons
Mr. and Mrs. Richard M. Sampson

Bettie Alsop
Mrs. Ninette A. Edmiston

Carol S. Anderson
Mrs. Joyce S. Comfort

Sally Anderson
Mrs. Mary Maloney

Virginia Appleby
Alumnae/i of the Sacred Heart,
Rochester, NY

Florence Ashe, RSCJ
Mrs. Joanne Moran Gilmore

Dorothy Asam and Frank Asam
Ms. Frances A. Asam

Flavia Augustine, RSCJ
Mr. and Mrs. Eugene Augustine
Dr. Joan Liddell

Elizabeth C. Bachle
Mrs. Andrea B. Fisher

Rosina H. Bairstow
Ms. Marie Bone

Mary Anne Barkofske
Ms. Kathleen M. Potts

Marion Bascom, RSCJ
Mr. and Mrs. Edward V. Hamilton, Jr.

Susan Bascom
Ms. Jane B. Luckhaupt

Helen Bates
Mrs. Patricia Rouchier

Blanche Baxter
Ms. Donna M. Beauregard and
Mr. Ronald L. Eng

Catherine "Kay" Baxter, RSCJ
Mr. Brendan J. Fogarty

Anne C. Beltrame
Mrs. Kathleen V. Beltrame

Harriot Benoist, RSCJ
Mrs. Jean S. Russell

Mary Boulos
Mrs. Audrey Nelson

Aimée Bourneuf, RSCJ
Mrs. Laurence J. Hoch

Barbara Bowe, RSCJ
Ms. Virginia M. Hamel

Anna Boyle, RSCJ
Mrs. Margaret King Fitzpatrick

Jane Gaffney Bradley
Mr. Richard J. Gaffney

Mary L. Brady, RSCJ
Mrs. Patricia A. Kolojeski
Mrs. Spencer K. Lanyi
Ms. Margaret M. O'Brien

Madeleine D. Brenman
Mrs. Marie D. O'Brien



Each one just as cute as the next: Sister Mary Ann Foy and students from Sacred Heart Schools, Atherton.



Sisters Mary Pat Ryan and Ann McGowan



Sisters Carol Burk and Margaret Munch



Sisters Joan Ewing and Diane Roche



Sophie Barat House in New Orleans welcomes individuals and groups for prayer, bible study and retreats. The Duchesne House for Volunteers staff join Sophie Barat community for many of their programs. Duchesne House for Volunteers staff welcomes young people and chaperones to help rebuild New Orleans. Pictured above, Sisters Jane McKinlay, Annice Callahan, Judy Vollbrecht, Anne Sturges and John Gniady, staff at Sophie Barat House, and Sisters Shelley Lawrence, Maureen Chicoine and Anne Byrne, staff at Duchesne House.

Barbara Brine
Mr. and Mrs. William H. Brine, Jr.
Mr. Christopher R. Fahey

Elisabeth Brinkmann, RSCJ
Mrs. Ursula Brinkmann

Ruth L. Brons
Mr. John C. Brons

Theresa D. Broussard
Ms. Elizabeth E. Wright

Allison Brown
Ms. Jane M. Brown

Jacqueline Brullard
Mr. and Mrs. Armand L. Bengle, Jr.

Ann C. Buckley
Ms. Virginia Harrison

Margaret Burke, RSCJ
Mr. and Mrs. Kenneth C. Mahieu, Jr.
Mrs. Margaret K. McHugh

Jo-Ann S. Burnham
Mrs. Nancy L. Kornmeier

Emily Butler, RSCJ
Ms. Kathleen E. Farley

Angelina Butorac
Ms. Dorothy Anderson and
Ms. Patricia Carter

Cynthia Byrnes
Ms. Madeleine Reilly

Margaret B. Cain
Mrs. Caroline C. Detwiler

Cecily Callaghan, RSCJ
Ms. Elvira C. Monroe

Ralph and Mary Callahan
Mr. and Mrs. Alfred Murray

Mary J. Cameron
Mrs. Genevieve M. Baay
Ms. Aimee Brignac

Mrs. Elizabeth D. Goodyear
Mr. and Mrs. Jimmy Hybart
Ms. Kathie Keller
Ashley LeBlanc, Janie LeBlanc
and Beth Fournier-Foch
Mr. Alan S. McDonald
Ms. Jane B. Moore
Mr. and Mrs. John Schramm
Ms. Erin R. Wheeler

Constance Campbell, RSCJ
Ms. Monica Armstrong and
Mr. Donald J. Kapa
Mrs. Joan Binder
Mrs. Lorraine D. Borel
Ms. Donna M. Boyd
Ms. Shirley G. Connolly
Mr. and Mrs. James Hewett
Mrs. Loretta Anne Kumpf
Mrs. Sharon C. Melchior
Ms. Sharon M. Meyerkamp
Mrs. Elizabeth J. Myers-Buhite
Mrs. Mary Ann Robbiano
Brian, Terry and Katy Williams
Mary Ellen and Jim Wilson

Susan Campbell, RSCJ
Ms. Monica B. Armstrong and
Mr. Donald J. Kapa
Mrs. Elizabeth J. Myers-Buhite

Oralia and Wilfido Cantu
Ms. Palmira Cantu

Elaine Carlsmith
Mrs. Jean C. Roman

Marie Louise Carmody, RSCJ
Mrs. Deborah Gwazda

Florence O. Carney
Mr. and Mrs. James H. Carney

Annie Carr, RSCJ
Ms. Virginia M. Hamel

Helen Carroll, RSCJ
Mr. William H. Miller

Carol R. Celli
Alumnae/i of the Sacred Heart,
Rochester, NY

Phyllis Anne Cetrone Johnson
Mrs. Phyllis Cetrone

C.S. Chandrasekaran
Mrs. Achamma Chandrasekaran

Rosalie Chen, RSCJ
Ms. Carol Chen and Ms. Patt Chen
Mrs. Mary Ann Robbiano

Patience R. Chrisler
Mrs. Abigail Lambert

Susan S. Chung
Dr. Young C. Chung

Mary T. Clark, RSCJ
Anonymous Donor
Dr. Beverly M. Boyd
Mr. and Mrs. Richard J. Cummins
Mrs. Marcia F. Gowen
Ms. Alice M. McMahon
Mrs. Patricia O'Hara
Margaret M. Postlewaite, Ph.D.
Mrs. Mary Joan M. Quinn

Elizabeth Clinch, RSCJ
Dr. Kathleen Remlinger

Joan Lueder Coffey
Mr. Edward C. Coffey

Marguerite O. Conan
Network of Sacred Heart Schools
Ms. Maureen E. Ryan

Margherita Condell, RSCJ
Mr. Peter L. Bacsik

Helen Condon, RSCJ
Mrs. Joan Binder

Patricia Y. Connor
Ms. Patricia A. Connor

Madeleine S. Cooney, RSCJ
Ms. Patricia B. Kenney

Helen Costello, RSCJ
Ms. Angela M. Robbiano

Rosemary A. Cozzo
Ms. Shirley G. Connolly

Malin Craig, RSCJ
Col. and Mrs. Robert L. Craig
Margaret Craig Sheehy

Margaret B. Craig
Mrs. Helen C. Lynch

Carlotta U. Crane
Mrs. Nancy M. Barnidge

Agatha Cronin, RSCJ
Mrs. Elizabeth A. Herguth

Maureen Cronin, RSCJ
Mrs. Gael Beresford-Raven
Mrs. Teresa Devincenzi

Beatrice C. Crozier
Ms. Virginia I. Calvo

Katherine Kelley Crumlish
Mr. Thomas K. Crumlish

Judy Cseuz
Ms. Jane D. Cruz

Sara Maria Cuadrado
Ms. Vivienne T. Cuadrado

Dorothea P. Cunningham
Mrs. Cynthia C. Whalen

Ethel Curren, RSCJ
Ms. Mary H. Derbes

Andrew Damonte
Mrs. Rita D. Tachis

Mary E. Davisson
Mrs. Margery M. Huemmler

John Davitt
Mrs. Gael E. Davitt

Ed and Emma De Sano
Mr. and Mrs. John R. Mahoney

Frances and Quinto Deantoni
Mrs. Janice A. Debastiani

Al Debastiani
Mrs. Janice A. Debastiani

*Deceased members, Class of '50,
Stone Ridge School of the Sacred Heart*
Mrs. Helen M. K. Brennan

Deceased Religious of the Sacred Heart
Ms. Frances A. Asam
Mrs. Mary Galdes
Mr. and Mrs. Kenneth Ponce

*Deceased teachers, Academy of the
Sacred Heart, Grosse Pointe*
Mrs. Patricia Gallacher

Thomas and Elsie Deeley
Ms. Donna E. Deeley

Claude Demoustier, RSCJ
Mrs. Alicia B. Christopher

George B. Desloge
Mrs. Mary Rose Desloge

Kathleen M. Desloge
Mr. and Mrs. Anthony M. Bommarito
Mr. and Mrs. Donald S. Boyce
Mr. and Mrs. Charles E. Bull
Dr. and Mrs. Patrick J. Cavanaugh
Mr. and Mrs. Nicholas B. Clifford, Jr.
Ms. Catherine Crane
Mr. and Mrs. Phillip C. Desloge
Taylor S. and Marian F. Desloge Fund
Mrs. George B. Desloge
Mrs. Julie Dubray
Ms. Barbara M. Eberle
Mr. Peter F. Eberle

Mr. and Mrs. James B. Hyde, Jr.
Ms. Marcella McDonnell-Stevens
Mr. and Mrs. Mason Mocabee
Mr. and Mrs. James J. Murphy, Jr.
Mrs. Jacqueline T. Nickamp
Mr. and Mrs. John T. Reed, Sr.
Mrs. Janet Schwarze
Mrs. Joan B. Sheehan
Mr. Francis H. Snyder
Mr. and Mrs. Donald A. Solomon
Mr. John L. Stein
The Jack Thomas Family

Rosemary F. Dewey, RSCJ
Ms. Virginia M. Hamel

Kara DiGiovanna
Kathleen M. Dooley DiGiovanna

Margaret Dillon, RSCJ
Dr. Rita J. Flynn

Agnes and Agnita S. Doelger
Mrs. Marie D. O'Brien

Nora H. Doherty
Mr. Gregg W. Doherty

Helen Donohoe, RSCJ
Dr. and Mrs. John R. McNeel

A. Catherine and W. Augustine Dunn
Mrs. Anne Marie Clayton

Glen D. Eagan
Mrs. Ninette P. Webster

Josefina Escobedo
Ms. Judy McDougle

Thomas Even
Mrs. Elizabeth Powell

Elena Facio, RSCJ
Mrs. Magali Herreros
Mrs. Luciano Medel



The Sophia House welcoming community in Berkeley, California consists of Sisters Agnes Chimbayo, Paula Toner, Mary Pat White, Mary McGann and Sol Navidad.



Jesuit Volunteers joined the Sophia House Community for dinner and prayer.



Sisters Trudy Considine and Kathleen Sullivan



Sisters Mary Jane Sullivan, Anne Byrne and Kathleen Dolan

Barby B. Fallon

Mrs. Sally D. Wilson

Mary Kay T. Farley

Mrs. Lawrence D. Buhl, Jr.
Mr. and Mrs. Richard Falge
Mrs. William K. Howenstein
Mrs. Harriet Hull
Mrs. Karen F. Hutchison
Mrs. Nancy L. Kornmeier
Mrs. Brigid S. Lamb
Mr. Timothy O. Miller
Mr. and Mrs. Glen E. Morse
Mrs. Margaret D. Muccia
Mr. Frederick J. Schroeder, Jr.
Ms. Joan F. Smith
Mrs. Frances F. Williams

Helen M. Farrell

Mrs. Helen F. Ryan

Henry and Jeanette Fassio

Mrs. Marie F. Pignati

Constance Feraco

Mrs. Andrea C. Balliette

Edwin and Peggy Fisher

Mrs. Anne F. Mabley

Adele Fiske, RSCJ

Mr. and Mrs. James Csaposs

Helen Jean Fitzpatrick

Mrs. Ella Jane Bailey
Ms. Madeleine O. Begley
Dr. and Mrs. Richard G. Belatti, Jr.
Ms. Candie Brady
Mr. and Mrs. John Brady
Brownson Circle Council of
Catholic Women in Omaha
Cerner Corporation
Ms. Edith M. Chapman
Mr. and Mrs. James F. Cleary
Ms. Mary Ann Connor

Mrs. Mary E. Dowd

Mrs. Rebecca Etter
Mary Elizabeth McKim Hotz Hartigan
Mr. and Mrs. Edward C. Heafey
Mr. Jim Heafey
Mr. and Mrs. David E. Hoover
Dr. James V. Huerter
Mr. and Mrs. Michael S. Langenfeld
Mrs. Donna Mazzie
Mr. and Mrs. James P. Monen
Mr. and Mrs. Norton D. Obrecht
The Joanne Murphy Purdy Family
Mr. and Mrs. John P. Reilly
Mrs. Nancy Ryan
Mrs. James F. Smith
The Gordon Soso Family
Mr. and Mrs. Kenneth W. Staab
Ms. Marguerite J. Stejskal
Ms. Patricia J. Wieser and
Mr. Gregg Wielage

*My aunts, Marie Ford, Olivia Ford,
and Sara Ford Casey*

Ms. R. Ann Ford

Ethelyn Fox, RSCJ

Mr. and Mrs. Michael E. Fox, Sr.
Mrs. K. Marie Gumucio
Mrs. Linda F. Vartanian

Genevieve Fox, RSCJ

Mrs. Margaret King Fitzpatrick
Mrs. Henrietta Holton-Thomas

Carol L. Frame

Mrs. Marc A. White

Mary M. Frechette

Ms. Rosemary C. Lavelle

Mary Fuegner

Sally C. Coleman

Conal Furay

Mrs. Jean Furay

Sally Furay, RSCJ

Dr. Melinda K. Blade
Mrs. Nicole Clay
Convent of the Sacred Heart,
Greenwich
Mr. and Mrs. Edward F. DeRoche
Ms. Margaret Duflock
Mrs. Sandra C. Farrell
Ms. Patricia Ferris
Mr. Jeremy Fields
Ms. Mary Elizabeth Hotz Hartigan
Mrs. Kathryn C. Hattox
Mrs. Pamela J. Hayes
Anonymous
Mr. and Mrs. Thomas F. Landers
Ms. Sharon M. Meyerkamp
Mrs. Mary F. Orradre
Mr. Jack Pope
Ms. Lupe Ramirez
Mrs. Jeannette B. Rigsby
Mr. and Mrs. Lucian Salazar, Jr.
Judge and Mrs. Patrick J. Schlitz
Schools of the Sacred Heart,
San Francisco
Mr. Craig M. Smith
Mrs. Pamela M. Snyder
Mrs. Denise D. Sprague
Dr. and Mrs. Richard Thibodeau
Dr. Roger Wu
Dr. Dan Yates

DeDe Gallagher

Barbara and Robert Muldoon

Frank "Ned" E. Gallagher

Ms. Karen McCanney

Jeremiah Gillette

Mrs. George T. Gaston

Anne Gaffney Gardner

Mr. Richard J. Gaffney

William T. Gray

Mr. and Mrs. J. Dorian McKelvy

Marguerite Green, RSCJ
Ms. Andrea B. Coffman

Andrew Griscom
Mrs. Mary T. Zodrow

Joan Grizzard
Mr. and Mrs. Boyd F. Lauritsen

Margaret Guest, RSCJ
Mrs. Paula R. Young

Peggy P. Gummere
Mrs. Agnes LaStoria

Mary G. Hall
Mrs. Agnes LaStoria

Helen Hammack, RSCJ
Ms. Alexandria C. Crosetti
Mrs. Penny D. Green

Robert E. Hannegan
Mr. and Mrs. Charles A. Calderwood

Helen M. Hanson
Mr. Lee Hanson

Janet Hanson
Ms. Mary Jill Hanson

Corinne Happy, RSCJ
Mrs. Susan S. Hatta

Katharine Hargrove, RSCJ
Mrs. June S. McNally

Maryellen Harmon, RSCJ
Ms. Margaret M. O'Brien

*Kathie, Nancy and Maurice "Bubby"
Hartson*
Mrs. Joanie Walet Hartson

Catherine Henry, RSCJ
Mr. and Mrs. Denis Baylor
Mr. William R. O'Neill *RIP*

Mary Henry, RSCJ
Mr. William R. O'Neill *RIP*

Ruth T. Hesterberg
Mrs. Frances McDonald

Joyce Higgins
Mrs. Maureen A. Smith

Ellen Hoffman, RSCJ
Ms. Ruth L. Beering
Mrs. Cynthia Grubb
Mrs. Pamela J. Hayes
Ms. Carolyn S. Henry
Mrs. Patricia M. Hicks
Mrs. Alfred V. Larrenaga
Sheridan, Tom, Thomas, Henry
and Harper Link

The Mazzucco Family
Mr. and Mrs. William P. O'Neal
Mr. and Mrs. Richard M. Raymond
Mrs. Mary Ann Robbiano
Donald and Lee Ellen Russell
Mary Ellen and Jim Wilson

Dorothy Holmes, RSCJ
Mrs. Fidelma C. Woodley

Margaret Mary Hone, RSCJ
Mrs. Carol M. Ward

Joan Hopkins, RSCJ
Shirley G. Connolly
Mr. Steve Griffith
Mrs. Barbara B. Hugenberg
Dr. and Mrs. John R. McNeel
Mrs. Mary Ann Robbiano
Mrs. Grace H. Smith

Nancy A. Hornback
Ms. Mary Katherine Adams

Tom Hunter
Ms. Constance A. Hunter

Alice Husson, RSCJ
Ms. Nancy Leamy

Gabrielle Husson, RSCJ
Nancy M. Bowdring

Mr. and Mrs. Clarence J. Brinkman
Mrs. Juliana F. Gilheany
Mrs. Joanne O. Hynek
Ms. Nancy Leamy

Margaret B. Jaros
Dr. and Mrs. William F. Bernhard

Madelyn Gilmore Jason
Jason Family Foundation

Anne Johantgen
Alumnae/i of the Sacred Heart,
Rochester, NY

Lucille John, RSCJ
Mrs. Mary C. Danaher

Evelyn Kane, RSCJ
Mrs. Carol M. Ward

Miriam W. Kane and Sheila K. Kane
Ms. Devi K. Zinzuvadia

Laura Keeler, RSCJ
Ms. Mary M. Riordan

Bridget Keenan
Mr. and Mrs. Harry W. Steele

Diane B. Kelly
Mrs. Andrea B. Fisher

Mary Alice Kelly, RSCJ
Mrs. Elizabeth A. Herguth

Jeannette Kimball, RSCJ
Mrs. Madeleine B. Sanders

Virginia Taylor Klose
Mrs. Deborah Klose

Virginia Kock
Ms. Frances A. Asam

Mary Anne Kolanoski
Mrs. Virginia Bispo



Sister Mary Pat Rives



Sister Mary Frohlich



Sister Beatrice Brennan



Sister Rosemary Roney



Louise Dagit, Marsha Whalen and Louise Hatch, at the reunion of RSCJ and former RSCJ at Sprout Creek Farm on the feast of St. Madeleine Sophie Barat.



Ofelia Garcia and Martha Pelaez at Sprout Creek Farm reunion.

Patricia C. Kolbe
 Mrs. Camilla D. Cloney
 Mr. and Mrs. Michael Lahue
 Ms. Grace N. Lee
 Mrs. Florence L. Peters

Thomas Kolojeski
 Ms. Frances A. Asam

Claire T. Kondolf, RSCJ
 Ms. Frances B. Call
 Mrs. Christine H. Coughlan

Delores B. Koznarek
 Mr. Edward J. Koznarek

Lucille Kraemer, RSCJ
 Mrs. Evelyn K. Francuz

Katie Lannan
 Mr. and Mrs. Frederick Wrightson

Dorothy A. Leahy and Jeanne L. Leahy
 Mrs. Barbara L. Brooker

Mary Jane Connors Leckinger
 Mr. William J. Fay

Leslie Lee
 Ms. Andrea-Marie M. Coombs

Susan Leiphart
 Mrs. Mary Maloney

Maryliz Lincoln
 Ms. Sharon M. Meyerkamp

Mary F. Lindsay
 Mrs. Jean Furay

Robert Little
 Mrs. M. Virginia Waterman-Casey

Theresa Logan
 Mrs. Harry F. Oderman

Carlos Lopez
 Mrs. Eveleen K. Lopez

Meryl Louis
 Mr. David E. Berlew

Angela Lubert, RSCJ
 Ms. Ann Marie Lubert

Julia Luini and Louis J. Luini
 Mr. and Mrs. John McGuire

Jean M. MacDonald
 Mrs. Patricia C. Ellingwood

Ruth A. Mackenzie
 Mr. William W. Mackenzie

Mary D. Magens
 Mrs. Margery M. Huemmler

Mary Magnano
 Mr. Richard L. Chenault

Catherine Maguire, RSCJ
 Mrs. Anita H. DiSomma
 Mrs. Mary E. Downs
 Kevin and Sally Healy

Joseph A. Maiullo
 Ms. Diana M. Greenwood

Gayle E. Maloney
 Ms. Mary Ellen Phelan

*Gertrude E. Manahan, RSCJ and
 Kathryn Manahan, RSCJ*
 Mr. and Mrs. Richard A. Hall

Marina V. Mapa, RSCJ
 Mrs. Dolores M. Keefe
 Ms. Virgilia F. Mapa

Anna Mae Marheineke, RSCJ
 Mrs. Mary Ann P. Budrovich
 Mrs. Berta Canto
 Mr. and Mrs. Thomas R. Dowd
 Mrs. Christine Fortier
 Mrs. Melanie Goudelocke
 Dr. Thomas and Mrs. Joyce Schneider
 Dr. Christine D. Sommer
 Ms. Frances Vatterott

The Markey Family
 Mrs. Kathleen M. McDonald

Linda Markey
 Mr. Paul Tucci

John M. Markham
 Ms. Mary Kay Black

Genevieve D. Martin
 Ms. Genevieve C. Martin

Mary Jo Martin
 Ms. Christina Chvala
 Mrs. Sue S. Mooney

Judy K. Mattson
 Renee Baldocchi Coleman and Family
 Mrs. Mary P. Trott

Barbara S. McAdams
 Mrs. Shirley Morrin Mulligan

Ursula McAghon, RSCJ
 Mrs. William F. Keeshan, Jr.
 Mr. and Mrs. Andrew McAghon

Nancy McAuley, RSCJ
 Ms. Mary F. McAuley

Madeleine McCarthy
 Ms. Elena H. Parkhurst

Virginia McCarthy, RSCJ
 Mrs. Patricia Diepenbrock

Margaret C. McDermott
 Alumnae/i of the Sacred Heart,
 Rochester, NY
 Ms. Lucille M. Hornby

Clare McGowan, RSCJ
 Dr. Margaret N. Maxey
 Mrs. Eileen W. Sutula

Helen McHugh, RSCJ
 Mrs. Virginia Bispo
 Ms. Mary M. Riordan

Marie McHugh, RSCJ
Mrs. Virginia Bispo

Dorothy A. McKannay
Ms. Christine DeVoto

Mary Catherine "Mickey" McKay, RSCJ
Mrs. Shari M. McCarthy

Joan McKenna, RSCJ
Ms. Nancy L. Thomson

Jane K. McKinley, RSCJ
Miss Jane A. Layman
Judge and Mrs. Patrick M. Schott

Irene W. McLane
Alumnae/i of the Sacred Heart,
Rochester, NY

Cora McLaughlin, RSCJ
Mrs. Elizabeth B. Leckie

Martha McLoughlin
Martha McLoughlin Foundation

Mary McMabon, RSCJ
Mrs. Donald E. Swansom

Virginia McMonagle, RSCJ
Mrs. Margaret D. Liautaud
Mrs. Laura Nottoli Bozigian
Mrs. Peggy E. Yingling

Mary Gray McNally, RSCJ
Mr. David A. Blanton, III

Catherine McShane, RSCJ
Dr. Melinda K. Blade
Mrs. Yvonne L. Tellam

Jane Miller, RSCJ
Mrs. Kathleen Owen

Jeanne D. Miller
Mrs. Leonore R. Daschbach

Katherine M. Miller
Mrs. Katherine K. Dare

Josephine Morgan, RSCJ
Mr. and Mrs. William E. Welsh, Jr.

Peter Mozino
Mrs. Barbara M. Seegul

Agnes Murphy, RSCJ
Dr. Melinda K. Blade

James K. Murphy
Mrs. Noel G. Murphy

Members of the Thomas Murray Family
Mrs. Margot M. O'Mara

Carol Myhre
Ms. Shirley G. Connolly

Robert Naughton
Ms. Joanne M. Naughton

Tina Neureither
Mrs. Vita N. McCall

Kay, Rudie and Ann Nichols
Mrs. Mary T. Zodrow

James E. O'Boyle
Mrs. Cynthia A. O'Boyle

Margaret Moira "Peggy" O'Brien
Ms. Mary Ellen Burke

Eleanor O'Byrne, RSCJ
Mr. and Mrs. James Csaposs

Mary O'Callaghan, RSCJ
Ms. Eleanor W. Malone
Mr. Harold Phipps and
Dr. Frances N. Phipps

Ann G. O'Connor
Mrs. Roseann D. Kelly

Robert J. O'Connor
Deaf & Hard of Hearing Dept. at
Ladue Early Childhood Center
Ms. Betty J. Donahoe
Mrs. Loretto Flynn

Ms. Joan M. Freese
Mr. and Mrs. Gregory T. Gelfand
Mr. and Mrs. Robert J. Grimm
Mr. Norwin G. Heimos
Dr. and Mrs. Patrick C. Hogan
The Kelly Family
Mr. and Mrs. Al W. Koke, Jr.
Mr. Douglas D. Lemmons
Dr. and Mrs. Arturo C. Montes
Mr. and Mrs. Joseph R. Niemann
Mr. John R. Openlander
Mrs. Carol L. Pellegrino
Mr. and Mrs. Michael N. Schuster
Mr. and Mrs. Thomas C. Shore
Mr. and Mrs. Daniel L. Sinclair
Ms. Linda A. Tindall

Anne O'Donnell
Mr. and Mrs. Tobin A. Schropp

Eileen O'Gorman, RSCJ
Ms. Mary Ann Mahan

Virginia O'Meara, RSCJ
Mrs. Catherine Hoehn

Margaret O'Neill
Mr. William R. O'Neill RIP

Margaret O'Rourke, RSCJ
Mrs. Margaret King Fitzpatrick

Mary K. Oswald, RSCJ
Mr. and Mrs. James H. Carney
Mrs. Linda Hogan O'Connor

Dorothy Owen, RSCJ
Mr. Michael A. Athanasiou
Ms. Catherine S. Kwon
Mr. and Mrs. John P. Owen
Mrs. Mary Ann Robbiano

Harriet Ann Padberg, RSCJ
Mr. and Mrs. Donald S. Boyce
Mrs. Florence M. Kueser



RSCJ and former RSCJ greet one another at the reunion at Oakwood: Barbara Dawson, RSCJ, Katherine Cassidy, RSCJ, Domini Collins, Lillian Conaghan, RSCJ, Carol Naumann Wolf and Maureen Aggeler.



Former RSCJ and RSCJ reunite the Sprout Creek Farm: Claire Lowery, Anne Morgan, Barbara Dawson, RSCJ; Lucy Babb Wright, Cathy Mooney and Sue Dale Wilcox.



Superior General Kathleen Conan, General Council Member Catherine Lloyd, and USC Provincial Team Member Sheila Hammond gather with students at the Academy of the Sacred Heart, New Orleans (The Rosary).



New heads of Sacred Heart Schools at the NAIS conference for new heads in Atlanta: Meg Huerter Brudney, Duchesne Academy, Omaha; Rik Dugan, Princeton Academy, Princeton, New Jersey; and Meg Steele, Woodlands Academy, Lake Forest, Illinois.

My Parents

Gertrude E. Schneider

Parents, Friends and Classmates

Mrs. Margaret J. Axelson

Carmela Parisi, RSCJ

Mr. and Mrs. Gregory Kahn

Rosalind "Molly" E. Parks

Ms. Mary Constance Parks

Dorothy Parton, RSCJ

Mrs. Frances P. Minno

Carol Pearl

Mrs. Maureen A. Smith

Margaret C. Phelan

Ms. Virginia G. Holm

Ms. Mary G. Hould

Ms. Kathy O. Lavezzo

Mrs. Nancy P. Miller

Ms. Evelyn I. Phelan

Ms. Roberta Schueszler

Mr. and Mrs. Robert Sparacino

Patricia Phelan, RSCJ

Mrs. Janice H. Henrotin

Ms. Evelyn I. Phelan

Mr. and Mrs. William D. Phelan

Mr. Guido J. Salomone, Jr.

Walter G. Phillips

Mr. Richard L. Chenault

Lawrence and Amelia Picetti

Mr. and Mrs. Edward Healy

Edita E. Piedra

Mr. and Mrs. Peter M. Robinson

Yvonne Pometti, RSCJ

Ms. Eleanor A. Jekot

Mary C. Boodell Prescott

Mrs. Leonora A. Dursin

Patricia Pridmore

Dr. Suzanne Bono and

Dr. Chip Bielinski

Mrs. Alice C. Brennan

Mrs. Mary Pat Farrell-Diekemper

Mr. and Mrs. Louis Glunz, III

Mr. and Mrs. George Koltse

Ms. Carol H. Lunde

Mr. and Mrs. Edmund J. Orr

Mrs. Justine Quain

The Stensby and Leavell Families

Mr. and Mrs. Alfred F. Zabinski

Mr. and Mrs. Jonathan Zeschin

Carol Putnam, RSCJ

Mrs. Mary P. Chatfield

Ms. Elizabeth L. Collins

Mary Quinlan, RSCJ

Ms. Dina Burke

Mary Ranney, RSCJ

Ms. Patricia Schroth

Sylvia M. Rauch, RSCJ

Mr. Derek Hopper

Elizabeth L. Reed

Mr. Victor L. Reed

Margaret Reilly, RSCJ

Mrs. Mary Ann Kerwin, Esq.

Religious of the Sacred Heart,

Maryville University

Mrs. Mary Jane Latino

Religious of the Sacred Heart,

San Francisco College for Women

Dr. Patricia Ann Crowley

Religious of the Sacred Heart, Stone Ridge

School of the Sacred Heart

Mrs. Paris K. Scott

Joanne Reynolds, RSCJ

Mr. Charles Quinn

Ms. Yvonne Reynolds

R. Richardson

Mr. and Mrs. Clarence J. Brinkman

Helen Rodstrom, RSCJ

Mrs. Elizabeth R. Berg

Pierina Ronconi, RSCJ

Mrs. Katherine B. Hirsch

Mrs. Mary Ann Robbiano

Mr. and Mrs. Bill Tortura

Barbara Root

Mrs. Patricia C. Hult

Aimée Rossi, RSCJ and Olga Rossi, RSCJ

Mr. and Mrs. John T. O'Rourke

Maureen Rost

Mr. Mathias and Mrs. Cristal Backer

Miriam Russell

Mr. Joseph G. Sullivan

Mary Elizabeth Ryan

Ms. Frances A. Asam

Ms. Virginia Fitzgerald

Dr. Bernice E. Gallagher

Mrs. Patrice M. Paglia

Mrs. Carolyn L. Price

Ms. Andrea Proulx Buinicki

Danny and Margaret Ruscitti

Ms. Patricia Ryan

Mr. and Mrs. Michael Sullivan

Ms. Jean Wiegel

Rita Ryan, RSCJ

Mr. and Mrs. John J. Hobza

Timothy F. Ryan

Ms. Mairead McAuliffe

Claire Saizan, RSCJ

Mrs. Cynthia Allen

Mrs. Susan R. Beckman

Mrs. Shirley B. Griffin

Odette Saizan

Mrs. Susan R. Beckman

Nancy Salisbury, RSCJ
Mrs. Pamela J. Hayes
Dr. Barbara J. Judge

Alicia Sarre, RSCJ
Ms. Isabel H. Ishino

Agnes Schmit, RSCJ
Dr. Lauren B. Plumer

Alvena Schraubstader, RSCJ
Mrs. Carol W. Temme

Marie-Louise Schroen, RSCJ
Mrs. Jean S. Russell

Lillian L. Schwarz-Corriea
Mrs. Dolores McKeever Donahue
Mr. and Mrs. John F. Harrington
Mr. and Mrs. Alvin C. Mellin, Jr.
Mr. and Mrs. Michael Witiw

Josephine M. Seitz, RSCJ
Mr. and Mrs. Richard A. Hall

Christine Shea
Alumnae/i of the Sacred Heart,
Rochester, NY

Takashi Shinoda
Mr. and Mrs. Richard H. Rowland

Lucille S. Sievert
Ms. Betty J. Henry

Rose Simmott
Mrs. Virginia F. Landblom

Victoria Siu, RSCJ
Mrs. Shizuko S. Ichiyasu
Dr. Clare Siu

Carmen Smith, RSCJ
Ms. Betty J. Henry

Celeste L. Smith
Ms. Hilary D. Magan

Frank G. Smith
Catherine S. Felleman

Martha Burns Smith
Mrs. Martha S. Lepore

Thomas P. Smith
Mrs. Shirley Morrin Mulligan

Catherine "Patsy" Gilligan Smyth

Mrs. Julie A. Albanese
Mr. and Mrs. Frank Besser
Mr. and Mrs. Mark Bonino
Ms. Anne L. Brillinger
Mrs. Barbara S. Brown
Mr. and Mrs. Martin Cattaneo
Ms. Lydia Cooper
Mr. and Mrs. Edward Donaghy
Mr. and Mrs. Rory Fuerst
Mr. and Mrs. Norman J. Gatzert
Mrs. Lois L. Hopkins
Dr. and Mrs. John J. Hutchings
Mr. and Mrs. Mario Ivanov
Mr. and Mrs. Cornelius F. Kelly
Mr. and Mrs. Thomas F. Kelly
Mr. and Mrs. Arthur Lampe
Mr. and Mrs. James MacKenzie
Mr. and Mrs. David Mariani
Mr. and Mrs. Joseph McMonagle
Ms. Joann K. Morey
Mr. and Mrs. Gregory Myall
Lee E. Nash
Mrs. Catherine S. Nietzel
Ms. Magdalena Ople
Mr. and Mrs. Manuel S. Ople
Mr. and Mrs. Robert Ramonda
Mrs. Mary Ann Robbiano
Mrs. Irma A. Rozynski
Mr. and Mrs. Thomas G. Smyth
Mr. and Mrs. Richard G. Stevens
Mr. and Mrs. H. Garrett Wada

Virginia R. Spethman
Mrs. Moye M. Wicks, III

Ruth Stanley, RSCJ
Mrs. Virginia B. Coudert



Dorothy Schmerbauch, receptionist and assistant at the provincial offices since 1982, retired in January. Friends and family joined the provincial office staff as we expressed our gratitude to Dot with photos and notes from hundreds in the province.

Rosemary Statt, RSCJ
Sr. Margaret M. Gregg, CSJ
Mrs. Mary E. Romson
Rev. Thomas R. Statt

Patricia Steppe, RSCJ
Mrs. Mary Ann P. Budrovich
Mr. and Mrs. Thomas R. Dowd

Sheilagh Stevick
Ms. Margaret Colleen Roberts

Glenn Stinson
Mr. and Mrs. Victor J. LoBue, Jr.

Kathryn Sullivan, RSCJ
Dr. Michael E. Sullivan

Kathleen Tesoriero
Mrs. Rosemarie N. Papa

Rosemary Thompson, RSCJ
Mrs. Mary Frawley-Thompson

Mary Patricia Thro, RSCJ
Mr. and Mrs. Thomas W. Dyer
Ms. Laura E. Griesedieck
Ms. Carolyn S. Henry
Mr. and Mrs. Gabe Kiley
Maryville University, College of
Health Professions
Mrs. Mary Ann Robbiano
Mr. and Mrs. Joseph R. Schrick
Ms. Dawn R. Stringfield
Mr. and Mrs. R. John Thro

Mary Elizabeth Tobin, RSCJ
Mr. and Mrs. Matthew P. Marino, Jr.
Mr. and Mrs. Scott P. Olson

Winifred M. Tooley
Mrs. Frances McDonald

Elia V. Torian, RSCJ
Ms. Margaret A. Thibodaux



We surprised Dot with putting her photo on the cover of her final *Update* – the internal publication which she oversaw for many years.

Dean Traynor, RSCJ
Mr. and Mrs. Kenneth C. Mahieu, Jr.

Dolores Van Antwerp, RSCJ
Mr. and Mrs. Cyril De Meulemeester

Anita Villeré, RSCJ
Mrs. Berta Canto

Barbara Visbal
Ms. Sharon M. Meyerkamp

Charlotte W. Vlerick
Mr. Richard Vlerick

*Lucille Walsh, RSCJ and
Mary Walsh, RSCJ*
Ms. Susan B. Meiners

Olga Warfield
Ms. Susan Whalen

Christine Webber, RSCJ
Mrs. Mary B. Bocchino



Provincial office staff: front row, Therese Meyerhoff, communications; Sister Carol Haggarty, assistant to the provincial; Sister Shirley Miller, mission advancement; middle row: Anne Wiehagen, mission advancement; Sister Regina Shin, database; Debbie Vespa-Schutz, medical benefits; Kim Pecoraro, finance; Lisa Terneus, executive assistant to the provincial team; Eliza Lynn, mission advancement. Back row: Janet Anderson, comptroller; David Pickens, information technology; Laurie Hoffman, accountant; Ron Bruns, chief financial officer; Sister Marina Hernandez, canonical treasurer.



Sisters Maria Cimperman (director of the Office of Consecrated Life at Chicago Theological Union) and Nancy Murphy serving and living in Indonesia.



Sisters Meg Causey and Eleanor Fox

Ann Webster, RSCJ
Mrs. Doris R. Beuttenmuller

Marie Whalen
Mrs. Patricia S. Ambrose
Mr. and Mrs. Michael Conley
Ms. Susan Whalen

Mary C. Wheeler, RSCJ
Mrs. Frances B. Drees

Elizabeth S. White, RSCJ
Mrs. Mary E. Downs
Mrs. Joanne O. Hynek

Kathleen Whitfield, RSCJ
Mark, Christine and Lisabeth Kelly

Frances Y. Wiggins
Mr. Charles Wiggins

Hilda Wills, RSCJ
Sra. Consuelo Navia de Buenaver

Louise Wilson
Alumnae/i of the Sacred Heart,
Rochester, NY

Claire Withers
Mrs. Richard S. Dinner

Richard Wolfington
M.A. Brightbill Body Works, Inc.
Ms. Margaret M. Carney
Mr. and Mrs. Thomas R. Cellitti
Mr. James J. Ciongoli
Mr. and Mrs. John J. Cunningham, III
Deitch Buses, Inc.
Ms. Gail W. Dillon
Ms. Louise F. Elmofy
Fishing Creek Transportation, Inc.
Mr. and Mrs. Kevin Flynn
Mr. and Mrs. Michael C. Foux
Freedman Seating Company
Mr. and Mrs. Andrew C. Gerlach
Mr. and Mrs. Clifford M. Gillespie

Girardat LP
Mr. and Mrs. William A. Graham, IV
Gross Equipment Company, Inc.
Hoglund Bus and Truck Co.
Mr. and Mrs. Robert G. Kelly, Jr.
Mr. and Mrs. Thomas L. Kelly
Keystone Insurers Group, Operated
by Reed, Wertz & Roadman
Leonard Bus Sales, Inc.
Mr. and Mrs. Frank J. Leto
Manko Gold Katcher Fox LLP
Ms. Suzanne Marr
Mr. and Mrs. Patrick T. McGowan
Mr. and Mrs. Kevin J. McGorry
Mr. and Mrs. John R. McNeil, III
Mr. and Mrs. George G. Miller
Mr. William Moore
Ms. Constance M. Morgenson
Harleysville Group-Nationwide
Insurance
Mr. and Mrs. Robert W. Nusbickel
Mr. and Mrs. Edward A. Pereles
Ms. E. Sandra Powers
Mr. and Mrs. Robert A. Rende
Mr. Edward C. Rice
Ristorante La Buca
Rittenhouse Bus Lines, Inc.
W. L. Roenigk, Inc.
H.E. Rohrer, Inc.
Miss Margaret H. Scheider
Mr. and Mrs. Edward W. Schmid, Jr.
Tour & Cruise Travel
Transit Works
Turtle Top
Mrs. Carol A. Wolfington
Ms. Lynn W. Wolfington
Mr. and Mrs. Bruce Wombough

Mildred R. Wood
Mrs. Karen M. Soares

Jake Wooten
Mrs. Maria Gambino

Margaret Wright
Mr. and Mrs. David Ish

♦ *Sophie Barat House Donors*

Mrs. Carolyn T. Abaunza
Mrs. Marguerite Adams and
Mr. Thomas Foutz
Mrs. Nancy Adams
Mrs. Helen Barnett
Mrs. Suzanne Bradley
Mrs. Virginia P. Candler
Mr. and Mrs. John N. Casbon
Mr. and Mrs. Oliver S. Delery, Jr.
Ms. Lorie G. Demarcay
Deacon Dan Dorsey
Dr. and Mrs. John O. Edmunds, Jr.
Mrs. Kate Elkins
Mrs. Catherine Eustis
Mrs. Elizabeth S. Hesse
Mrs. Lisa T. Holden
Mrs. Patricia Del Hunter
Mrs. Thomas M. Irwin, Jr.
Mrs. Evelyn Katz
Mrs. Margaret Kemmerly
Mrs. Mary Kay Kurzweg
Mrs. Elizabeth G. Manthey
Ms. Patricia A. Mathes
Mr. Elbert F. McKinlay
Mrs. Kathy Meunier
Mrs. Sally O'Meallie
Ms. Lori Parigi
Mrs. Constance Parker
Mrs. Jill Perez
Mrs. Mary Jane Phelan
Mrs. Elisabeth A. Rareshide
Mrs. Ruth V. Schmedtje
Mrs. Ana Maria Schmit
Judge and Mrs. Patrick M. Schott
Mrs. Sandra Shedlarski
Mrs. Linda Stone
Rev. William Thiele

◆ *Lycee du Sacre-Coeur de Mbanza-Mboma, Congo*

Gifts to help rebuild after dormitory fire

Mr. and Mrs. David M. Byers
Mr. Timothy J. Corcoran
Mrs. Leah DeJoseph
Ms. Sheila F. Donahoe
Ms. Madeleine Felix
Ms. Alice K. Felker
Mrs. Marilyn M. Frank
Mrs. Roseann F. Guerrini
Mrs. Alessandra M. Gulli
Ms. Ann Heuertz
Mrs. Anne R. Kane
Mrs. Rosann D. Kelly
Ms. Patricia C. Kolbe *RIP*
Mrs. Mary Frances O'Connor Moriarty
Newton Country Day School of the Sacred Heart
Mrs. Kathleen B. O'Regan
Dr. Sonya A. Quitslund
Mrs. Catherine B. Reedy
Mrs. Yvonne E. Rucker
Mr. Paul Rydberg
Sacred Heart School of Montreal
Mrs. Pamela M. Snyder
The Stein Family
Stone Ridge School of the Sacred Heart, Middle School Students
Mrs. Mary E. Walsh
Mrs. Marc A. White
Mr. Geoffrey S. Wolk
Ms. Elizabeth Young

◆ *Haiti*

Mrs. Ursula Brinkmann
Mr. and Mrs. Gregory Kahn
Mr. and Mrs. Woods Martin
Mrs. Linda G. MacKay
Sacred Heart School of Halifax-French class students

◆ *Indonesia*

Anonymous
Cyril F. and Marie O'Neil Foundation
Mr. and Mrs. Daniel E. Holmes
Anonymous
Ms. Elizabeth McLoughlin
Mr. Mark O'Neil

◆ *Bequests*

Edna M. Brennan
Mary Virginia Donnelly
Mary Kay Tracy Farley
Bernice E. Houlihan
George P. Keeley
Donald E. Morris
Helen J. Morris
P. Rosemary Peeler
Mary Lou Sheibley

◆ *Foundations and Trusts*

1002 Foundation
The Marion and Addison Bartush Fund
The Briggs-Fisher Foundation
Anonymous
Considine Family Foundation
Cyril F. and Marie O'Neil Foundation
De Porre Family Foundation
Catherine McKeever Denten Foundation
Garnetta Kramer Charitable Foundation
Robert Gould Foundation Inc.
Anonymous
The Guice Family Foundation
Joyce Higgins Trust
Jason Family Foundation
The Kutch Family Fund of the Dallas Foundation
The Loyola Foundation, Inc.
Malcolm Cravens Foundation
Martha McLoughlin Foundation
Menard Family Foundation
The Mikita Foundation

Molloy Foundation Inc.
Mutual of America Foundation
Prospect Foundation Inc.
Marge and Charles J. Schott Foundation
Speramus Foundation
Trust Fund Incorporated
Von Barga Trust
C.A. Wall Family Foundation

◆ *Matching Gift Organizations*

Bristol-Myers Squibb Foundation
Matching Gift Program
Chevron Humankind
College Access Foundation of California
The JPMorgan Chase Foundation

◆ *Gifts in Kind*

Ms. Alice J. Burns
Ms. Julie Connelly
Mrs. Diane E. Gutierrez
Ms. Michelle Hogan
Mr. and Mrs. John M. Kinabrew, III
La Prima Catering
Smyth Family

This report acknowledges all donations received by the Society of the Sacred Heart, United States–Canada Province, from September 1, 2014 to August 31, 2015. Every effort has been made to compile an accurate list. If your name does not appear or is listed incorrectly, please accept our sincere apologies and contact the Mission Advancement Office with your corrections: Shirley Miller, RSCJ, smiller@rscj.org or Eliza Lynn, elynn@rscj.org.

PHOTO CREDITS

Suzie Barber
Laura Beeson
Mary Charlotte Chandler, RSCJ
Imma De Stefanis, RSCJ
Linda Duffy
Sayka Inaishi
Therese Meyerhoff
Shirley Miller, RSCJ
Stephanie Moore
Nancy Morris, RSCJ
Karen Olson, RSCJ
Michael Pera
Diane Roche, RSCJ
Mary Schumacher, RSCJ
Erica Steckler
Phil Steckler
Mary Jane Sullivan, RSCJ
Mary Pat White, RSCJ
Design: Peggy Nehmen, N-KCreative.com



Sister Meg Canty



Hearts on Fire retreat participants Sisters Silvia Villanueva, Peru, and Aletta Latorre, Colombia.

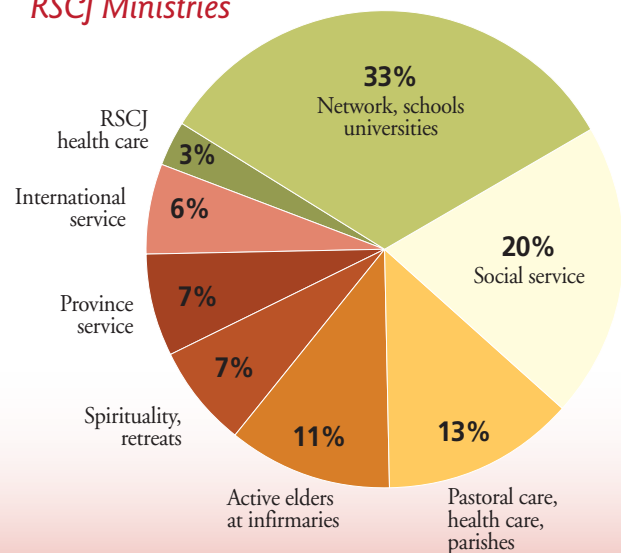
Fund Raising Income (unaudited figures)

Number of gifts.....	2,300
Annual Appeal and Related Gifts.....	\$1,860,000
Realized Bequests.....	\$1,600,000
Pledge payments.....	\$140,000
Total gifts.....	\$3,600,000

Financial Facts 2014-2015

Annual USC Province budget.....	\$18,797,312
Annual budget allocation for retirement centers.....	\$4,396,901
Average per-person cost for RSCJ in retirement homes.....	\$57,103
Income from RSCJ salaries.....	\$4,841,918
Average per-person retirement income from Social Security.....	\$8,068
Average per-person retirement income from TIAA/CREF.....	\$10,376

RSCJ Ministries



Society of the Sacred Heart
United States – Canada

The Society of the Sacred Heart of Jesus is an international community of women in the Catholic Church, founded in 1800 by Saint Madeleine Sophie Barat. Sharing her vision and mission, we are convinced of the centrality of prayer and contemplation in our lives. We, the Religious of the Sacred Heart, are committed to discovering and making God's love visible in the heart of the world through the service of education. Conscious that what we do, we do together, and remembering a tradition marked by a love for young people and missionary spirit, the Religious of the Sacred Heart carry out this service of education:

- ♥ especially in the work of teaching and formation
- ♥ in other activities for human development and the promotion of justice
- ♥ in pastoral work and guidance in the faith

— Constitutions of the Society of the Sacred Heart, 1982



PROVINCIAL TEAM Sheila Hammond, RSCJ; Margaret (Meg) Causey, RSCJ; Anne-Marie Conn, RSCJ; Barbara Dawson, RSCJ, Provincial; Diana Wall, RSCJ.



Sister Virginia Rodee with former students and Korean alumnae.



Sister Irene Cullen, United States Mission Support for Uganda-Kenya and Rosemary Namukasa, first president of the Uganda alumnae association at the AMASC conference.



Sisters Betty Nakyenzi, Fran Tobin and Pricillian Nyirampamira chat at the provincial assembly in July.



Sister Virginia Schumann and Angela Bayo, at Teresian House, Albany, New York.



Sisters Margaret Phelan, director of the international archives in Rome, and Cecile Meijer, the Society's NGO representative at the United Nations.



Sisters Eleanor MacLellan, Mary Finlayson and Kimberly King

Thank You!

www.rscj.org • 314-652-1500

4120 Forest Park Avenue
St. Louis, MO 63108-2809



Society of the Sacred Heart
United States – Canada

Nonprofit Org.
U.S. Postage
PAID
St. Louis, MO
Permit No. 5806

Revealing God's love in the heart of the world

