



Society of the Sacred Heart™
United States – Canada

2016-17 Mission Advancement Report



HEARTS
TRANSFORMED
BY FIRE

HEARTS TRANSFORMED BY FIRE

“The Society of the Sacred Heart shares in the mission of the Church by making known the revelation of God’s love whose source and symbol is for us the Heart of Christ. By our charism we are consecrated to glorifying the Heart of Jesus: we answer this call to discover and reveal His love by letting ourselves be transformed by His Spirit so as to live united and conformed by Him and through our love and service to radiate the very love of the His Heart.”

—Constitutions of the Society of the Sacred Heart, #3 and #4

TO REACH NEW FRONTIERS

TO LIVE MORE HUMANLY



Novices from the international English-speaking noviceship enjoy making music together.

TO CREATE SILENCE

This annual report, organized according to the four “calls” from the Society’s international Chapter 2016, strives to express how the family of the Sacred Heart responds to the needs of the world today, with “hearts transformed by fire.”

Front cover, from top

- Little Heart student catching bubbles at the Academy of the Sacred Heart, the Rosary, New Orleans, LA
- Mary Louise Jenkins, RSCJ, at Oakwood
- Mater at Woodlands Academy, Lake Forest, IL
- Ann Leonard, RSCJ, at Caritas Residence

Front cover center

- Sisters Bridget Bearss, Reyna González, and Irma Dillard served on the Assembly Steering Committee

Back cover

- Sally Stephens, RSCJ, reading to students at Villa Duchesne and Oak Hill School, St. Louis, MO

The image of FIRE appears often in the Scriptures, calling the followers of Jesus to enter more deeply into the Heart of God, to be transformed, to be touched by the Divine, to change our lives so that we can help God change the world. Many places in our world are going up in flames because of hatred, despair, anger and hopelessness. We are called into a different fire – the fire of love which opens us up to the needs of our world.

“We are aware of living in an historic time of change and uncertainty. The Spirit continues to transform us as a Society in order to respond to the cries and hopes of our world with the same daring trust and confidence with which St. Madeleine Sophie and St. Philippine Duchesne responded in their time. Like them, united in our searching and open to the gifts of the Spirit in this new moment, we are called: To reach new frontiers. To live more humanly. To create silence. To be and act as one body.”

— Chapter Documents, 2016


TO BE AND ACT AS ONE BODY



▲ Associate Katie Swanstrom and Sisters Betty Nakato and Rose Marie Quilter at the Feast of the Sacred Heart at Villa Duchesne and Oak Hill School on June 23, 2017

◀ Students in class at the Josephinum Academy of the Sacred Heart in Chicago





August 31, 2017

Dear Friends in the Sacred Heart Family,

This annual report comes with our gratitude, our love and our prayers for all of you who are part of the Sacred Heart Family in the United States-Canada Province. We are so grateful to you for sharing in our life and our mission “to discover and reveal God’s love in the heart of the world.” Together we fulfill Sophie and Philippine’s dream to spread God’s love and serve God’s people.

Throughout this annual report, you have marvelous visual images of how the USC Province is living the life and the mission that has been entrusted to the Sacred Heart family and which you make possible. You will see in vibrant color the faces of RSCJ and our colleagues in mission, our alumnae/i, our Associates. You will also see the faces of so many with whom we minister. May the joy captured in these photos remind you of the joy that your generosity brings forth.

Over the last year we have taken up the calls of the General Chapter of 2016, and we have been preparing for the celebration of the Bicentennial year 2017-2018, marking the arrival in the New World of Philippine Duchesne and her companions, Octavie Berthold, Marguerite Manteau, Catherine Lamarre and Eugénie Audé.

As we reflect on the calls of the Chapter, we are thrilled to tell you of some new frontiers that have been part of our lives and mission and which you have helped make possible:

- The opening of the international English-speaking noviceship in Chicago with four novices, one from the USC Province, one from Korea and two from Japan
- The establishment of the Philippine Duchesne Region, (the USC Province) with our sisters in the provinces of Latin America and the Antilles province to foster greater union and mission collaboration with all of our sisters in these parts of the world
- Becoming full members of LA RED, the popular education project of Latin America
- Ongoing programs of vocation ministry including lay participation in our vocation ministry committee and increased use of social media where millions of “hits” record contact with the spirituality and mission of the Society

In our efforts to implement the call to live more humanly, we have:

- Continued to develop programs and strategies to respond to calls for peace, to stop human trafficking, and to foster efforts for environmental sustainability and healthy waters through the staff of the Stuart Center, the office of Justice, Peace and the Integrity of Creation (JPIC), the United Nations, as well as our communications office in St. Louis
- Collaborated with other religious organizations to support Syrian and other refugee families
- Developed through the Ministry Office at the Stuart Center a “ministry map” which shows the varieties of ministry engagement of RSCJ and their colleagues in mission throughout the USC Province
- Continued to educate thousands of young women and men in the 24 schools of the Network of Sacred Heart Schools
- Continued through the Conference of Sacred Heart Education to form links with Sacred Heart schools around the world
- Initiated Education to Mission programs through the Conference of Sacred Heart Education using technology to open the mission and spirituality of the Society to a world-wide public

The Chapter call to create silence strikes familiar chords for everyone these days. To rest in quiet and reflect on our experience seems to be a hunger within all of us. As we continue to deepen our interior lives, we also offer opportunities in a variety of settings to communicate the spirituality and mission of the Society and to learn with others how our contemplative lives and our apostolic actions are of a piece, one single movement to make God’s love known in our world. We are blessed to offer:

- Prayer and retreat experiences in our spirituality centers in San Diego, New Orleans, and Halifax and through Sophie’s Well, which offers the famous “Busy Person’s Retreats” in a variety of settings with our colleagues in mission
- Volunteer opportunities for young people to experience and reflect on that experience as the foundations of the projects
- Houses of welcome for young women who wish to pray, share faith, and discern a call to religious life in Berkeley, CA, Boston, MA, and Washington, DC, and White Plains, NY

The General Chapter had an important insight for all of us in its call “to be and act as One Body.” This is a strong affirmation of what we have known to be true – the Sacred Heart Family does mean all of us, each with our unique gifts and inspirations working together for

the mission that unites us and calls us forth. As we reflect on the meaning of being One Body, we are aware of:

- Our ongoing commitment to provide excellent health for our elder sisters and of the gift that their dedicated and inspiring lives offer us
- The Associate groups in the United States and Canada, which are continuing to grow and are developing relationships with other Associates in the Society around the world
- The International Volunteer Program, which hosts young people from around the world who will live and work with RSCJ in the USC Province, reflecting together on their work experience with poor and marginalized people in light of the Gospel and the Society's mission – for the sake of one we were founded, and in the light of the Gospel we are all one

For the last several years, the Bicentennial Committee has been working on a worthy celebration of the arrival of our sisters on these shores, the beginning of the internationality of the Society and the spread of our educational mission to the world beyond France. The USC Province celebration officially opened on the Feast of the Sacred Heart this year. The international celebration will open on St. Philippine's Feast, November 18, 2017, when all of the Sacred Heart Family will be invited through the RSCJ website and the International website to a year of prayer in gratitude and in hope. We will thank God for Philippine and her companions' courage, steadfast perseverance, and openness to the unknown and the new. We will also ask that these might also be our characteristics as we move the mission forward into the future. We count on your joining us in this prayerful celebration that will always include our gratitude for your part in sustaining the mission that unites the whole Sacred Heart family.

Count on our prayers for you and your loved ones. We also count on your prayer for us and the Sacred Heart Family around the world.



With love,

A handwritten signature in black ink that reads "Sheila Hammond RSCJ".

Sheila Hammond, RSCJ
Provincial
United States-Canada Province

August 31, 2017

Dear Friends,

As you will see from Sister Sheila Hammond's letter, this has been a momentous year for the Society of the Sacred Heart, United States-Canada Province. We welcomed Sister Hammond as our new provincial, replacing Sister Barbara Dawson who moved to Rome to begin her eight-year term as superior general of the international Society of the Sacred Heart, and we welcomed as well, Sister Mary Finlayson who joined Sister Hammond's provincial team.

This annual report attempts to express how the family of the Sacred Heart is responding to the four calls from the Society's General Chapter, 2016. These calls set the direction for the international Society for the next eight years:

- To reach new frontiers
- To live more humanly
- To create silence
- To be and act as one body

We are all called to respond to the needs of our world today, needs which can seem overwhelming at times. But as we all work, dream, pray and plan together, we know we can make a difference in the lives of others and in our lives with one another. We are grateful for your friendship, financial support, prayer and involvement in the ever evolving Society of the Sacred Heart. You are making a significant contribution to the healing of our world. Let our hearts continue to be transformed by the fire of the Heart of Christ.

"Let us go forward in hope to live our mission, as women and men of fire and sowers of seeds of new life." (Barbara Dawson, RSCJ, Superior General of the Society of the Sacred Heart)



Gratefully,

A handwritten signature in black ink that reads "Shirley Miller, RSCJ".

Shirley Miller, RSCJ
Director of Mission Advancement

RSCJ ACROSS THE PROVINCE



Sisters Irene Herbst and Nancy Ghio at the Feast of the Sacred Heart Mass at Villa Duchesne and Oak Hill School, St. Louis, MO



Sisters Juliet Mousseau, Donna Collins and Sally Rude with Elizabeth Pera, daughter of Archives staff member, Michael Pera



Kenmore community, Chicago, IL: Sisters Suzanne Rogers, Sally Brennan, Mary Hagele, and Mary Bernstein



► Georgeann Parizek, RSCJ, lower school dean of students at the Academy of the Sacred Heart, the Rosary, New Orleans, LA, with children on the Mater Campus

The *Cor Unum Legacy Society* was introduced in the spring of 2009. The following are those who have remembered the Society of the Sacred Heart in their estate planning; the listing includes all realized bequests received by Kenwood, Oakwood, and the province since 2002, and all those who have expressed in writing their intentions to remember the Society in the future. If you would like to join the *Cor Unum Legacy Society*, please contact Shirley Miller, RSCJ, smiller@rscj.org or 314-652-1500.



Lucy Henry Abernathy
 Mary Louise Adams *RIP*
 Maureen Aggeler
 Victoria Taylor Allen
 Monica Brady Armstrong and
 Donald J. Kapa
 Gertrude Mary Attridge *RIP*
 Patricia Ann Avery
 Margaret Smith Barnell *RIP*
 Harriet C. Barrett *RIP*
 Emile Barsch *RIP*
 Elizabeth Ross Berg
 Meryl Louis *RIP* and David Berlew
 Anonymous
 Marion Mouton Blanchard
 Mary Gent Blosser *RIP*
 Jean W. Bone *RIP*
 Linda Emmick Bradford

Maudie Williams Bremer
 Edna M. Brennan *RIP*
 Anne Baer (Melanie) Brent
 Paul S. and Eileen O'Reilly Brescia *RIP*
 Mary Ann Manion Bridge
 Barbara Brine *RIP*
 Virginia Alders Briner *RIP*
 Patricia A. and Richard C. Browne
 Jeanne K. Burchell *RIP*
 Marianna McIntyre Burke
 Alice G. Burlinson
 Dorothy Towers Burns
 Mary T. Burns *RIP*
 Josephine F. Burtschi *RIP*
 Grace Butler *RIP*
 Annchen Kliegl Byrne *RIP*
 Brenda Byrne
 Leontine Keane Cadieux *RIP*

Anita Callero *RIP*
 Jane Shields Campbell
 Robert W. Campbell *RIP*
 Mary Louise Canfield *RIP*
 Ligeia Gallagher Cannon *RIP*
 Elizabeth A. Casey *RIP*
 Ann Cortis Chapman *RIP*
 Richard L. Chenault
 Anonymous
 Patricia Clapp
 Betty J. Clemen
 Alice Lida Cochran *RIP*
 Mary Miller Cochran
 Virginia Yates Connolly *RIP*
 Wilma Cooksey *RIP*
 Mary Kay Cooley
 Elizabeth Ann Cooney *RIP*
 Mark Cooper
 Danna M. Crowley
 Mildred Crowley *RIP*
 Jean Fox Csaposs
 Mary Constance Cumiskey
 Harry J. Curry *RIP*
 Louise M. Dagit
 Jane Vollbrecht Dall
 Margaret M. Davies *RIP*
 Dorothy Salisbury Davis *RIP*
 Maude S. Davis
 Helen Dawson *RIP*
 Jessica Stocking Demay *RIP*
 Sarah Hayes Dembinski
 Sandra Derby
 Bonnie Dewes *RIP*
 Rita Desaulniers Dinneen *RIP*
 Anita Hennessy DiSomma
 Catherine Dolan *RIP*
 Barbara Finlay Donahue
 Emily Charles Donahue
 Constance Burdzy Donius *RIP*
 Mary Virginia Donnelly *RIP*
 Mary J. Dowd *RIP*
 Anne M. Doyle
 Diane M. Duacsek
 Margaret Mary Duff *RIP*
 Judith Fay Duffy
 Catherine B. Eardley-Murphy
 Sarita and Brent Eastman
 Rozanne H. Edmondson
 Edouard and Mary Quigley Eller
 Patricia Coyle Ellingwood

Charlotte Ward McDonnell Euwer *RIP*
 Juliana L. Ewald *RIP*
 Nancy Faust Fahey
 Robert Fanning *RIP*
 Mary Kay Tracy Farley *RIP*
 Kathleen and H. Mortimer *RIP* Favrot
 Florence C. Fee
 Catherine S. Felleman
 Mary V. Fisher *RIP*
 Dorothy Heidloff Fletcher *RIP*
 Elisabeth Flynn-Chapman
 Mary Louise Keane Forcade *RIP*
 A. Sylvia Francis
 Dorothea Wanner Frech *RIP*
 Ana M. Freyre de Azqueta
 Grace M. Frontin
 Elvera L. Fusco *RIP*
 Mary Patricia Gallagher *RIP*
 Ofelia Garcia
 Christine McElligott Garner
 Madeleine S. Gary *RIP*
 Gail Gavello
 Mirta Noemi Geddo
 Mary Lee Kaiser Geesbreght
 Kate Laux Geiger
 Carol Wettlaufer Gelderman
 Jane R. Gerritzen
 Angela M. Gillespie
 Katherine E. Golden *RIP*
 Margaret S. Hagarty *RIP*
 Frank and Julia Gomes
 Marian Haggarty *RIP*
 Mariclaire Haggarty *RIP*
 Louise Tesson Hall
 Virginia M. Hamel
 Agnes Rutledge Hanford, *RIP*
 Margaret M. Hannon *RIP*
 Beth Hanson *RIP*
 Aileen Harline
 Marie J. Hartigan
 Margaret J. Hayes *RIP*
 Frances Madigan Healey
 Nancy A. Heffernan *RIP*
 Elaine Ibold Heile
 Jeannette Renner Hemmen
 Carolyn S. Henry
 Heather Campbell Henry
 Miriam V. Henry *RIP*
 Richard G. Hibbs *RIP*
 Jean Frank Hicks

Lindsay Galloway Hill
 Mary Jo Heile Hogan *RIP*
 Diane B. Holt *RIP*
 Margaret Hopkins
 Anna Carroll Horsey *RIP*
 Bernice E. Houlihan *RIP*
 Ann Lord Howkins *RIP*
 Lucie Furstenberg Huger *RIP*
 Rosemary D. Hunter *RIP*
 Mary C. Hunyady *RIP*
 Constance Gallagher Hynes
 Janet Gallagher Jacobs *RIP*
 Catherine V. Janes *RIP*
 Brooke Janis
 Dorothy and Eugene Jaroch *RIP*
 Marie Louise Grace Joffrion
 Patricia Jones *RIP*
 Julie Kammerer
 Jasper H. Kane *RIP*
 Lucy Kastenbein
 George and Lois Mailloux Keeley *RIP*
 Glenna La Salle Keene
 Marion Schuyler Kellogg *RIP*
 Jill O'Connor Kelly
 Karen L. Kelly
 Katharine H. Kernan
 Winifred Beam Kessler
 Eileen Hickey King *RIP*
 Louisa D. Kirchner *RIP*
 Ann Bates Kittle
 B. J. Wysz Kittredge
 Lillian E. Kleve *RIP*
 Alice Roy Kolb
 Patricia Lamborn Coward Kolbe *RIP*
 Patricia J. Konert *RIP*
 Margaret M. Kostouros *RIP*
 Jane O'Brien Krigsman *RIP*
 S. E. Labine
 Lynn L. Lacroix
 Ann Lammers-Lasek
 Mary W. Lamy
 Irene J. Lawrence-Conrady
 Albert and Ursula Lawson *RIP*
 Stephanie McKinley Layman *RIP*
 Jeanne Lamorelle Leahy *RIP*
 Mira and Andrzej Lechowicz
 Moira J. Lees
 Dorothy Lindberg *RIP*
 Lillian Hoy Link *RIP*

Molly Molloy Linneman
 Elizabeth Lin Lo *RIP*
 Josephine K. Long *RIP*
 Rosemary Potts Loyacono
 Marilyn Doyle Lynch
 Edwin and Elinor Maccamy *RIP*
 Elizabeth A. Madden
 Mary Irene Madden *RIP*
 Jane Correa Maggin *RIP*
 Loretta Maguire *RIP*
 Sheila Anne Mahony
 Anonymous
 Deirdre Grogan Mardon *RIP*
 Mary Jo Martin *RIP*
 Woods and Patsy Martin
 Mrs. William B. Martin, Jr.
 Martinez Family
 Margaret N. Maxey
 Jane McAuliffe *RIP*
 Claire M. McGowan
 Patricia McCann
 Joan and Jack McGraw
 Kathleen M. McKenna
 Kathleen Patricia McKenna *RIP*
 Anonymous
 Sharron Vavak McKenzie
 Cyr McMillan *RIP*
 The McMorrow Family
 Margaret K. McRath
 Rose Merino
 Beverly Merrill *RIP*
 Jean Messerve
 Ellen Statt Miller
 Jean Hicks Miller *RIP*
 John and Teresa Molbeck
 Mary Elizabeth C. Moloney *RIP*
 Gregoria Monterroso *RIP*
 Alice C. S. Montgomery *RIP*
 Helen Healy Moorhead
 Kathleen Moretti
 Donald E. Morris *RIP*
 Helen J. Morris *RIP*
 Carolyn Funkhousen Moynihan
 Virginia Murillo
 Margaret E. Murphy *RIP*
 Elizabeth J. Myers-Buhite
 Laurette Marcotte Naylor
 Lynne and Harold *RIP* Neitzschman
 Kate and Paul Nelson
 Catherine and John Neveling *RIP*



Maureen Little, RSCJ, middle school religion teacher, at the Academy of the Sacred Heart, the Rosary, New Orleans, LA



Emma Fernandez, RSCJ, at Oakwood with her 2016-17 Atherton student of the Sacred Heart Society



Lorraine Landry, RSCJ, the Academy of the Sacred Heart, the Rosary, New Orleans, LA



Dolores Copeland, RSCJ, teaching lower school children at Sacred Heart Schools, Atherton, CA



Vera community in Redwood City, CA: Sisters Park Yeong Ja, Lucy Hayes, Mary Kay Hunyady and Pamela Hickey



Patty Drummond, registrar at Woodlands Academy of the Sacred Heart in Lake Forest, IL, and Irma Patricia Reiss, RSCJ



Elaine Abels, RSCJ, co-director of mission integration and spiritual care at the Sarah Community, St. Louis, MO



Sisters Ann McGowan and Mary Pat Ryan, longtime members of the faculty and staff at St. Raymond Catholic Elementary School in Menlo Park, CA

- Jane K. Newton *RIP*
 Nancy-Elizabeth Spellshouse Nimmich
 Dorothy O'Carroll
 Jeanne O'Brien O'Connor
 Mary C. O'Gorman *RIP*
 Doranne Terhune O'Hara-Casto
 Sharon L. Ohlms
 Dennis and Virginia Wurzer O'Neal
 Cornelia P. O'Neil *RIP*
 Ralph O'Neil *RIP*
 Rosemary O'Neil
 Kathie O'Sullivan *RIP*
 Airlie Ogilvie
 Rosario A. Olivares
 Eva V. Ollis *RIP*
 Marie L. Owen *RIP*
 Dorothy Rodriguez Pandaleon
 Joseph H. Pawlish *RIP*
 P. Rosemary Peeler *RIP*
 Alice Farley Peppard and Philip Farley *RIP*
 Virginia W. Perkins
 Anita R. Peterson *RIP*
 Nancy D. Petry
 Margaret Crowley Phelan *RIP*
 Margaret D. Pizzo
 Bernice S. Pratt *RIP*
 Suzanne Reynolds Price
 Mary Jane Keck Proctor
 Peggy Lou Prudell *RIP*
 Mary Hall Quinlan *RIP*
 Muriel M. Rada
 Emily Kernan Rafferty
 Louis R. Ranney *RIP*
 Robert and Mildred Reardon *RIP*
 Virginia and John Rebeck *RIP*
 Gloria Redmond *RIP*
 Amy C. Richardson
 Dana Sue Roberson
 Marie M. Rogers
 Mary E. Romson
 Mamie J. Rose *RIP*
 Patricia McCafferty Rouchier
 Irma A. Rozynski
 Elsie Gelpi Rubin *RIP*
 Cathleen A. Ryan
 Mary Catherine Hoffmann Ryan
 Michael E. and Fran Ryan
 Hortensia Hacker Sampedro
 Barbara Corron Sanders
 George W. and Faye B. Saul *RIP*
 Carroll Saussy
 Joanne B. Schelske
 Ruth V. Schmedtje *RIP*
 Mary Lou Sheibley *RIP*
 Constance Hanley Smith *RIP*
 Pamela Moore Snyder
 Elizabeth Largay St. John
 Reverend Thomas R. Statt
 Rina Stefani
 Elaine S. Stenger
 Judith Kay Stoeve
 Merna Stoflet *RIP*
 Bonnie Walsh Stoloski
 Andree Strybos *RIP*
 Constance Heide Sullivan
 Rose Breslin Sullivan *RIP*
 Dolores A. Supper
 Jean Brady Sweeney *RIP*
 Harriet K. Switzer and David L. Cronin
 Virginia Tarjan
 Joan McSweeney Terry
 Sandra J. Theunick
 Bernadette J. Thibodeau
 Mary Jane Tiernan
 Anonymous
 Martha Peters Toon
 Lelia Timmins Totten *RIP*
 Margaret Cambron Tracy *RIP*
 Ruth Hogan Tredway *RIP*
 Diane Remien Tymick
 Dacia Van Antwerp
 Mary T. Verkamp *RIP*
 Virginia Vessa-McLaughlin
 Louise Gerrity Vollertsen
 Madeleine Von Barga *RIP*
 Olga Gannon Warfield *RIP*
 M. Virginia Waterman-Casey
 Edward Watson *RIP*
 Patricia Bernstein Wells
 William and Mimi Welsh
 Susan Whalen
 John E. Whitfield, Sr. *RIP*
 Suzanne Dale Wilcox
 Francine Templeman Wimsatt
 Patricia T. Woodley
 Evelyn and Albert Worner *RIP*
 Loretta M. Young *RIP*



Open House Community, Grand Coteau, LA: Sisters Lucie Nordmann, Margaret Caire, Maria Luisa Cotto and Barbara Moreau



Cornell Community, Chicago, IL: Sisters Martha Curry, Mary Frohlich, professor at Catholic Theological Union (CTU), Chicago; and Maria Cimperman, director of the Office for the Study of Consecrated Life at CTU



Julie Boyd, division head (DH) for upper school; Maria Schneider, DH for Little Hearts (Early Childhood Learning), Melanie Guste, RSCJ, headmistress; Kay Higginbotham, former DH for lower school; and Laurie Friedrichs, DH for middle school at the Academy of the Sacred Heart, the Rosary, New Orleans, LA

► Carol Burk, RSCJ, teaches knitting to lower school students at the Academy of the Sacred Heart, the Rosary, New Orleans, LA.



ANNUAL APPEAL DONORS SEPTEMBER 1, 2016 – AUGUST 31, 2017

Thank you for each gift to the province, as each gift helps to further our spiritual and educational mission and contributes to the care of our elderly sisters.

St. Madeleine Sophie Donor Circle

Ms. Margaret C. Phelan *RIP*

St. Philippine Duchesne Donor Circle

Anonymous

Miss Elvera L. Fusco *RIP*

Janet Erskine Stuart Donor Circle

Mrs. Betty L. Dunn

Anonymous

Marge and Charles J. Schott Foundation

Aloysia Hardey Donor Circle

The Briggs-Fisher Foundation

Considine Family Foundation

Mrs. Kathleen G. Favrot

Garnetta Kramer Charitable Foundation

Anonymous

Mr. and Mrs. John A. Hatherly

Mr. Arnold Kaulakis *RIP*

Anonymous

Anonymous

Margaret M. Kostouros *RIP*

Ms. Loretta Maguire *RIP*

Cyril F. and Marie O'Neil Foundation

Ms. Marie L. Owen *RIP*

Ms. Sharon Peterson

Mrs. Ruth V. Schmedtje *RIP*

Anthony J. Soukenik, Sandberg
Phoenix & von Gontard P.C.

Tobin Family

Mater Admirabilis Donor Circle

The Marion and Addison Bartush Fund

Ms. Maureen Aggeler

Ms. Kathleen Brophy

Mr. and Mrs. Edward Conan

Ms. Marguerite A. Conan

Ms. Donna E. Deeley

Mrs. Barbara F. Donahue *RIP*

Mary Virginia Donnelly *RIP*

Mrs. Elizabeth M. Fisher-York

Mr. and Mrs. J. Patrick Gallagher, Jr.

Mr. and Mrs. Daniel Glauber

Mr. and Mrs. Martin G. Glavin

Mr. (*RIP*) and Mrs. Robert Glockner

Ms. Kathleen E. Hegenbart

Mr. and Mrs. Robert H. Kim

Anonymous

Mr. and Mrs. John V. McGraw, Jr.

Ms. Mary Lynn Miller

Ms. Victoria E. Schwarz

Mrs. Bernadette Settelmeyer

Von Barga Trust

Mrs. Carroll Waldner

Mrs. M. Virginia Waterman-Casey

Mrs. Suzanne D. Weiss

Très Bien Donor Circle

Mr. and Mrs. Richard W. Abrams

Alumnae/i of the Sacred Heart -
San Diego

Mrs. Doris Bato

Mr. and Mrs. Robert L. Berner, Jr.

Mrs. Sara N. Bredemann

Peter and Lynda Clark Charitable Fund

Mrs. Patricia Coats

Mrs. Kay Ingraham Davis

Declusin Family

Mrs. Taylor S. Desloge, Taylor S. and
Marian F. Desloge Fund of the Greater
Saint Louis Community Foundation

Drury Development Corporation

Mr. and Mrs. David Fambrini

Alumnae/i of the Sacred Heart -
Florida Gold Coast

Mrs. Evelyn K. Francuz

Mr. and Mrs. Calvin L. German

Ms. Marie J. Hartigan *RIP*

Mrs. James E. Heile

Mrs. Laurence J. Hoch

Mrs. Mary E. Ketchum

Maureen Pecht King and
Charles G. King

Mr. and Mrs. John F. Latu, Jr.
885

Menard Family Foundation

Mrs. Amy M. Miller

Mrs. Katherine D. Quigley

Mindy and Jesse Rogers

Sacred Heart Schools - Atherton

Mrs. Mary Lou Sheibley *RIP*

Blue Ribbon Donor Circle

AASC de Latin America

Alumnae/i of the Sacred Heart - Arizona

Alumnae/i of the Sacred Heart -
Newton College

Alumnae/i of the Sacred Heart -
St. Joseph

Mr. and Mrs. Harry W. Anderson

Anonymous

Mr. and Mrs. Nicola M. Antakli

Mr. Antonio Argiz

Ms. Patricia R. Arnold

Ms. Frances A. Asam

Anonymous

Mr. David E. Berlew

Mrs. Ludmila Schwarzenberg Bidwell

Ms. Mary Kathryn Black

Mrs. Patricia L. Bollinger RD

Ms. Nancy M. Bowdring

Mrs. Ursula Brinkmann

Mr. and Mrs. William Bull

Mr. John A. Burgener

Ms. Karen Burkhardt

Ms. Sheila O. Burns

Mrs. Ann Carter Cane

Mrs. Marie T. Carleton

Mrs. Joan R. Challinor

Ms. Hilary W. Charlton

Mr. Richard L. Chenault

Children of Mary - New Orleans

Children of Mary - St. Louis

Dr. Joseph J. Ciancaglino

Patti and John Cody

College Futures Foundation

Mr. Arthur J. Conley

Mr. and Mrs. Peter Corcoran

Mrs. Joan A. Costamagna

The Cowlin Family Fund

Mrs. Danna M. Crowley

Mr. and Mrs. Robert Curley

Mrs. Leonore R. Daschbach

Mrs. George B. Desloge, George and
Mary Rose Desloge Family Fund of
the St. Louis Community Foundation

Mr. and Mrs. Frank S. Dinger

Ann K. Maschka Dorminy

Mrs. Patricia D. Doyle

Dr. Carolyn C. Driscoll

The Tracy Ann Dulworth Fund of
The Dallas Foundation

Anonymous

Mrs. Catherine B. Eardley-Murphy

Drs. Sarita and Brent Eastman

Dr. and Mrs. John O. Edmunds, Jr.

Dr. and Mrs. James D. Eggers

Dr. and Mrs. Mac Arthur Elyada

Mrs. Gail Ellis

Cong. Anna G. Eshoo

Ms. Catherine S. Felleman

Mrs. Jennifer E. Finlay

Mr. (*RIP*) and Mrs. William A. Fitzgerald

Ms. Jean Fitzpatrick

Mr. and Mrs. Patrick M. Flynn

Mrs. Kathy Fortier

Mr. and Mrs. Michael E. Fox, Sr.

Mr. and Mrs. David Galaher, Jr.

Mrs. Renata D. Gallagher *RIP*

Dr. Ofelia Garcia

Mr. and Mrs. Claude J. Gaubert

Mrs. Margaret S. Hagerly *RIP*

Mr. and Mrs. Edward V. Hamilton, Jr.

Ms. Annmarie D. Hart

Mrs. K. Denise Hattler

Mrs. Florence Hawes

Patricia and Hugh Hayden

Mrs. Anne N. Heidt

Heimbinder Family Foundation

Ms. Carolyn S. Henry

Mrs. Heather C. Henry

Mr. and Mrs. Mark W. Holland

Michael R. and Catherine Bisso Howard

Mrs. Ann Barmettler Hug

Mrs. Barbara B. Hugenberg

Ms. Marjorie A. Hughes

Jason Family Foundation

JM Mitchell Group, Inc.

Mr. and Mrs. Joseph R. Kaiser

CONT. ON PAGE 12

Donor Recognition Levels

Sacré Coeur Donor Circle — \$1,000,000+

St. Madeleine Sophie Donor Circle — \$999,999-500,000

St. Philippine Duchesne Donor Circle — \$499,999-250,000

Janet Erskine Stuart Donor Circle — \$249,999-100,000

Aloysia Hardey Donor Circle — \$99,999-25,000

Mater Admirabilis Donor Circle — \$24,999-10,000

Très Bien Donor Circle — \$9,999-5,000

Blue Ribbon Donor Circle — \$4,999-1,000

Green Ribbon Donor Circle — \$999-1

CHAPTER CALL 1 – TO REACH NEW FRONTIERS

► **General Council of the international Society of the Sacred Heart:** Front row: Sisters Marie-Jeanne Elonga (Democratic Republic of Congo), Barbara Dawson (USC), Superior General; Daphne Sequeira, (India); back row: Sisters Monica Esquivel (Mexico) and Isabelle Lagneau (Belgium, France and Netherlands). The mother-house of the Society is in Rome.



► **The international English-speaking noviceship** for the Society opened in Chicago in the fall of 2016. Pictured here are the members of this community: Sisters Yuriko Tezuka (Japan); Min-Ah Cho (USC); Ellen Collesano, RSCJ, director of the noviceship (USC); Miriam Ryu Young Hye (Korea-Chinese); Chihiro Yamamoto (Japan); and Muriel Cameron (USC), assistant director.



► On Monday, March 24, 2017, three pilgrims, Roscoe Hill, Ann Sieben and Jim Adams, began walking from Mound City, KS, to St. Charles, MO, in honor of the bicentennial of Saint Rose Philippine Duchesne. After visiting Sugar Creek and the area where Saint Philippine lived and prayed with the Potawatomi, they began a **335-mile pilgrimage to the Academy of the Sacred Heart**. They arrived on May 18, after 25 days of walking 10 to 15 miles a day.



To go out, to “set sail” as a Society and go with others to new geographic and existential peripheries to accompany the life that is emerging there, to defend justice, peace, and the integrity of creation in response to all of those who are searching for meaning in their lives, those who have been wounded, displaced, and excluded because of poverty, violence, and environmental degradation.



◀ **The Summit Leadership Academy** is a highly successful program for youth and young adults offered by the Office of Educational Initiatives and Leadership at the Stuart Center. The program has been offered in different countries and contexts over the last five years. This is a group of students from Universidad del Sagrado Corazón (USC) in San Juan, Puerto Rico. All components of the program are highly interactive and focus on the dreams, concerns and culture of young adults today.



◀ **The Global Citizen Project** is organized by the Office of Educational Initiatives and Leadership at the Stuart Center. This year's project took place in Washington, DC, at the Stuart Center. The 12 participants were young adults and early career professionals ages 19-30 representing five countries: Mexico, Puerto Rico, Haiti, Cuba and the United States. All were previous participants in the Summit Leadership Academy in their respective countries. This program has a three-fold focus: (1) It takes leadership to the next level so that young adults can see the work of justice as a possible career path and not only a student volunteer experience. (2) There is a “train the trainer” dimension so that the Leadership Academy is not entirely dependent on the Stuart Center, but rather trains qualified young adults to implement the program. (3) Brings a more global, interconnected approach to social change by having members from different organizations work together on the development of a regional level project.



◀ **The Stuart Center's Office of Educational Initiatives and Leadership** provided a week-long professional development workshop for educators in the Diocese of Bayamo, Cuba. The 30 participants were primary through university level educators. There are only public institutions in Cuba and the workshops provided participants with an opportunity for reflection and the exploration of the spiritual dimension of the educational process as well as deepening their knowledge of theories and practices of teaching. This workshop is part of the alliance between the Stuart Center and the Catholic Conference of Bishops in Cuba.

BLUE RIBBON DONOR CIRCLE, CONT.

Mr. and Mrs. Timothy J. Kay
 Richard and Rose Ann Kehoe
 Mrs. Elizabeth Syufy Kelley
 Mrs. Charlotte M. Kent
 Ms. Ann Key
 Kincoppal-Rose Bay School of the Sacred Heart
 Mrs. Dorothy M. King
 Anonymous
 Mrs. Ann B. Kittle
 Lauren Gray and Brad C. Koenig
 The Kutch Family Fund of the Dallas Foundation
 Ms. Germaine K. LaBerge
 Mrs. Sheila C. Labrecque
 Mrs. Madelyn C. Law
 Ms. Geraldine M. Lawhon
 Mr. and Mrs. George D. Le Maitre
 Mr. and Mrs. Thomas P. Lenehan
 Dr. and Mrs. Lawrence G. Lenke
 Mrs. Evelyn Loh
 Mrs. Thomas N. Loser
 The Loyola Foundation, Inc.
 Mrs. Carol H. Luders
 Mrs. Sheldon Lykes
 Mr. William J. Lyons, Jr.
 Ms. Mary Leigh Madden
 Malcolm Cravens Foundation
 John and Kay Younger Mallon
 Mrs. Mary Maloney
 Ms. Stephanie Swope Martens
 Mr. and Mrs. Woods Martin
 Mrs. Irene McInerney
 Ms. Kathleen P. McKenna *RIP*
 Mr. Mark McLaughlin
 Dr. and Mrs. John R. McNeel
 Mrs. Lorraine F. Melton-Bayuk
 Mr. and Mrs. Frank H. Menaker, Jr.
 Ms. Margaret Ann Miller
 Mr. and Mrs. John N. Molbeck, Jr.
 Molloy Foundation Inc.
 Mr. and Mrs. Joseph P. Morey, Jr.
 Morrison, Brown, Argiz & Farra, LLC
 Mr. and Mrs. Douglas Mousseau
 Dr. Moyra Siu Moy
 James, Maree, Patricia and Emily Mulvoy
 Ms. Rowena Naidl
 Anonymous
 Mrs. Cornelia P. O'Neil *RIP*
 Miss Rosemary O'Neil
 Mrs. Mary Ann Orchard
 Mrs. John T. O'Rourke
 Mrs. Barbara C. O'Shaughnessy *RIP*

Paul E. Kelly Foundation
 Peninsula Building Materials Company
 Dr. and Mrs. Richard A. Pirotte
 Mr. and Mrs. Richard J. Quinlan
 Mr. and Mrs. Michael J. Rapier
 Mrs. Elisabeth A. Rareshide
 Mr. and Mrs. Richard M. Raymond
 Ms. Amy C. Richardson
 Jane and Bruce Robert
 Mrs. Donna Y. Rohne
 Rose Valley Partners
 Mr. and Mrs. Michael E. Ryan
 Sacred Heart Schools - Sheridan Road
 Schiro Family Foundation
 Mrs. Donna Juliane Spillane
 Mr. and Mrs. Martin Stanislaw
 Reverend Thomas R. Statt
 Mrs. Rina Stefani
 Dr. Judith K. Stoewe
 Mrs. Bonnie Walsh Stoloski
 Mr. Seong B. Suh
 Dr. Harriet K. Switzer and Dr. David L. Cronin
 Ms. Marcia Syufy
 Mrs. Diane Taylor
 Mr. and Mrs. Stephen D. Taylor
 Ms. Margaret A. Taylor and Mr. Floyd Gonella
 Helen Texido Family
 Ms. Sara Kay Thompson
 Ms. Suzi Tinsley
 Mrs. Linda F. Vartanian
 Paul and Robin Collins Vermylen
 Mr. and Mrs. Michael Voldstad
 Ms. Dorothy C. Wackerman
 Ms. Donna S. Widmer

Green Ribbon Donor Circle

Mrs. Carolyn T. Abaunza
 Mrs. Susan A. Abell
 Lucy H. Abernathy Fund of the Jewish Community Foundation
 Mr. and Mrs. Robert W. Ackerman
 Mrs. Mary Ryan Ackerman
 Mrs. Maryan M. Ackley
 Ms. Abigail E. Adams
 Ms. Judith K. Adams
 Ms. Marguerite Adams and Mr. Thomas Foutz
 Ms. Mary Katherine Adams
 Mrs. Nancy Adams
 Dr. and Mrs. Robert J. Adams
 Mrs. Victoria Serrano Adams
 Mr. W. Terry Adams
 Mr. and Mrs. Williams M. Adams
 Ms. Senayish Addis



In 2015 the Religious of the Sacred Heart opened a new community in Washington, DC, with a special mission to serve young adults who are interested in social justice and spirituality. During the 2016-17 year, the following programs were offered: Taize Prayer, Exploration of Mass Incarceration, Justice and Political Actions, Muslim-Christian Dialogue, Discernment Weekend, and a full-time experience of community life.



Members of the extended Kearny Street Community with Sisters Pat Gueting, Betsy Hartson, Diane Roche and Lisa Buscher after Taize Prayer at the Stuart Center



Diane Roche, RSCJ, and Brooks Zitsmann, associate, members of the Kearny Street Community



Young adults, including students from American University and Trinity University, attended a Muslim/Christian dialogue gathering at the Kearny Street community.

WELCOMING COMMUNITIES – HEART OF OAK



In the Heart of Oak community in Newton, MA, we create space to share our spirituality and mission as Religious of the Sacred Heart with young adults who teach us in turn about their deep longings, struggles, and hopes for a world ever new.



Sisters Barbara Quinn (second row, third from the right) and Mary Pat White (seated far left) with students from Boston College during an evening of prayerful reflection and pot luck supper at the Heart of Oak Community house



Mary Pat White, RSCJ, (front row, second from the right) joined a group of Boston College students for the Climate Change Rally on the Boston Common.

- Ms. Mary E. Addison
- Ms. Sheri Adelson
- The W.P. Atkins Family
- David and Yvonne Adler
- Mrs. Nancy A. Agnew
- Mrs. Jo Anne G. Ahern
- Ms. Patricia Aiken-O'Neill
- Ms. Belle Akers
- Mrs. Patricia E. Alberding
- Ms. Joan Alders
- Mrs. Susan G. Alessi
- Mrs. Margrit L. Algeciras
- Mrs. Mary O'Gorman Allan
- Mrs. Sally Sorenson Allegaert
- Mrs. Patricia E. Allen
- Mr. and Mrs. Richard M. Allen
- Mrs. Laila Almeida
- Dr. Rebecca Alpert
- Mrs. Patricia Altenau
- Alumnae/i of the Sacred Heart - Bloomfield Hills
- Alumnae/i of the Sacred Heart - Elmhurst
- Alumnae/i of the Sacred Heart - Rochester
- Alumnae/i of the Sacred Heart - San Antonio
- Alumnae/i of the Sacred Heart - Southwest Florida
- Alumnae/i of the Sacred Heart - Treasure Coast
- Alumnae/i of the Sacred Heart - Wyoming
- Anonymous
- Mrs. Patricia Schaefer Ambrose
- Mrs. Marcelle E. Amory
- Mrs. Janet Anderson
- Mrs. Judith A. Anderson
- Mrs. Kristin M. Anderson
- Mrs. Sarah A. Anderson
- Ms. Shelly Lemelle Anello
- Mr. and Mrs. Michael J. Angelides
- Mrs. Judith F. Anthon
- Apple Matching Gifts Program
- Mrs. Nora Archibald
- Mr. Robert J. Armbruster
- Ms. Monica B. Armstrong and Mr. Donald J. Kapa
- Mrs. Barbara W. Arndt
- Mrs. Jane R. Arnold
- Ms. Phyllis O. Ashley
- Mr. and Mrs. David Askren
- Mr. and Mrs. Anthony W. Asmuth, III
- Associates of the Sacred Heart - New Orleans
- Ms. Maria Asteinzna
- Mrs. Patricia K. Atwill
- Ms. Laure C. Aubuchon
- Mr. and Mrs. Eugene Augustine
- Mrs. Sarah J. Avery
- Dr. Martha C. Awdziejewicz
- Ms. Cynthia Bacciocco
- Mr. and Mrs. Peter Backus
- Mr. Peter L. Bacsik
- Mrs. Bevinn F. Badenhausen
- Mrs. Margot L. Badenhausen
- Ms. Barbara B. Baekgaard
- Mrs. Frances A. Bailey
- Mrs. York Baker
- Mrs. Virginia Baldelli
- Mr. and Mrs. John S. Baldini, Jr.
- Mrs. Carolyn Balducci
- Mrs. Andrea C. Balliette
- Ms. Margaret Baltar
- Mrs. Barbara A. Bankovitch
- Ms. Contessa M. Bannon
- Mrs. Mary A. Baralt
- Mrs. Rita O'Brien Barichievich
- Mrs. Mary Dell Barkouras
- Mrs. Barbara A. Thunder-Barnes
- Mrs. Judith D. Barnes
- Mrs. Helen Barnett
- Mrs. Joan Barron
- Ms. Martha M. Barry
- Mrs. Suzanne Barry
- Ms. Melanie J. Bartels
- Mrs. Gabrielle Bartolanzo
- Ms. Karen Battaglia
- Ms. Julia L. Battle
- Mr. and Mrs. Peter Bauman
- Ms. Dorina Bautista
- Mrs. Stavra Bayer
- Mrs. Yvonne B. Bayhi
- Mr. and Mrs. Denis Baylor
- Mr. and Mrs. William Beasley
- Mrs. Ann M. Beatty
- Ms. Donna M. Beauregard and Mr. Ronald L. Eng
- Anonymous
- Mrs. Ruth L. Beering
- Mrs. Tara Beering
- Ms. Anne E. Begley
- Mrs. Madeleine Ortmann Begley
- Mrs. Margaret A. Behan
- Ms. Linda Behrens
- Mrs. Michaela Marciel Belatti
- Ms. Herlinda R. Belcher
- Ms. Pamela L. Belluomini, Ed.D.
- Mrs. Louise Belt
- Dr. Deborah Bender and Dr. John F. Curry
- Mr. and Mrs. Armand L. Bengle, Jr.
- Mrs. Ellen R. Bent

GREEN RIBBON DONOR CIRCLE, CONT.

Ms. Alice M. Berdan
 Mrs. Gael Beresford-Raven
 Mrs. Elizabeth R. Berg
 Mrs. Mary M. Berg
 Mrs. Mary E. Berry
 Mr. and Mrs. Albert Bertagna
 Mr. and Mrs. James B. Betterman
 Mrs. Jane McNamara Bieber
 Mrs. Joan Binder
 Mrs. Virginia M. Bispo
 Dr. Melinda K. Blade
 Marge and Terrence Blaine
 Mrs. Marion Blanchard
 Mrs. Rosemary E. Blase, Ph.D.
 Mr. and Mrs. Henry J. Blommer
 Mr. and Mrs. David P. Bobzien
 Mrs. Mary B. Bocckino
 Mr. and Mrs. Laurence G. Bodkin, Jr.
 Mrs. Beverly F. Boedeker
 Mr. and Mrs. Louis J. Boggeman, Jr.
 Ms. Michele Bogue
 Mrs. Jean B. Bolton
 Ms. Bernadette M. Bomhack
 Ms. Isabel Marie Bone
 Ms. Anita Boragno
 Mrs. Jean M. Bordon
 Mrs. Lorraine Dallas Borel
 Mrs. Emily A. Bott
 Ms. Emily M. Bowden
 Mrs. Hope Donovan Bowles
 Dr. Beverly M. Boyd
 Mr. and Mrs. Thomas E. Boyle, Jr.
 Mrs. Linda E. Bradford
 Margaret and Kathleen Bradley
 Mrs. Suzanne Bradley
 Mrs. Adria Brandt
 Dr. and Mrs. Mark E. Branon
 Mrs. Margaret H. Braun
 Mrs. Maureen A. Bray
 Mrs. Gretchen S. Breaux
 Ms. Alice C. Brennan
 Mrs. Helen M. Brennan
 Mr. Michael R. Brennan
 Ms. Anne C. Brescia
 Ms. Karen P. Brewster
 Mrs. Ninette M. Brierre
 Mrs. Margaret B. Brinkhaus
 Bristol-Myers Squibb Foundation
 Matching Gift Program
 Mrs. Ann H. Brockette
 Mrs. Katharine W. Broderick
 Mr. and Mrs. John J. Broders
 Ms. Mary P. Brody

Ms. Diana G. Brotherton-Ware
 Mrs. Louis M. Broussard
 Mrs. Joan B. Broussard
 Mr. and Mrs. Winston C. Broussard
 Ms. Ann F. Brown
 Ms. Eleanor C. Brown
 Dr. Julie M. Brown
 Mrs. Kathleen T. Brown
 Mrs. Nicole B. Brown
 Ms. Zoe C. Brown
 Patricia A. and Richard C. Browne
 Mrs. Margaret H. Brudney
 Ms. Kristina Kay Bruning
 Dr. M. Elizabeth H. Bruns
 Dr. George C. Bryan
 Mrs. Mary Anne Bryan
 Mr. and Mrs. George Buckland
 Mr. and Mrs. James F. Buckley, Jr.
 Sarah M. Buckley and Tobi Stuert
 Mrs. Nancy M. Buckman
 Mrs. Carol C. Budds
 Sra. Consuelo Navia de Buenaver
 Mrs. Susan G. Buese
 Mrs. Lawrence D. Buhl, Jr.
 Mr. and Mrs. Charles E. Bull
 Ms. Bonnie-Lynne Burchett
 Mr. and Mrs. Roger D. Burgis
 Mr. and Mrs. John C. Burke
 Mrs. Delia Burke
 Mrs. Dina C. Burke
 Mrs. Janet Burke
 Mr. and Mrs. James L. Burke
 Dr. M. Linda Burke
 Mr. and Mrs. Thomas J. Burke
 Ms. Marjorie W. Burke, Esq.
 Ms. Mary Elizabeth Burke
 Ms. Mary Ellen Burke
 Ms. Mary Stan Burke
 Regina C. and Richard F. Burke
 Mr. Guy V. Burnett
 Ms. Barbara G. Burns
 Ms. Cary Sturges Burns
 Ms. Julie P. Burns
 Mrs. Susan P. Burns
 Mrs. Vinita M. Burns
 Mrs. Nina B. Burrell-Klee
 Mrs. Lin O'Malley Butler
 Mrs. Ann Buttrick
 Ms. Liz Byas
 Mrs. Marjorie L. Bycraft
 Ms. Sally Cacchiotti
 Mrs. Victoria C. Cady
 Ms. Barbara Anne Cagney
 Mrs. Katherine B. Caire
 Ms. Maureen S. Cairns



Rebecca House, a new RSCJ community in White Plains, NY, welcomes young adults ages 21-30 seeking an experience of community, reflection and social action.



WELCOMING COMMUNITIES – SOPHIA HOUSE



Sophia House

The mission of Sophia House, in Berkeley, CA, is to reach out to women and young adults in the greater San Francisco Bay Area. Currently, five RSCJ live in the community, and there is room for more. The community at Sophia House places an emphasis on simplicity of life, care for the environment, contemplation and community. Each member carries out her own ministry, but each has also committed herself to the shared ministry of the House.



Prayer and potluck, Sophia House, February 2017



In honor of her sabbatical year at the SAT program in Oakland, Flo Tumukunde, RSCJ (Uganda Kenya Province, on right) was celebrated by the Sophia House community who sponsored an “Africa Night” – a time for friends from various parts of Africa to come together for African food, conversation, and dancing. In addition to Sisters Flo and Mary McGann, RSCJ (center), the other women pictured here are lay women working or studying in Berkeley.

- Mrs. Mary Ellen Conway Calabrese
 Mrs. Carolina Calderin
 Ms. Christine Cales
 Mrs. Thomas J. Calise
 Ms. Frances B. Call
 Ms. Aileen Callahan
 Ms. Clare Callahan
 Mr. and Mrs. Kevin B. Callanan
 Mrs. Margaret D. Callen
 Ms. Barrie S. Callender
 Mrs. Brenda B. Camou
 Ms. Mary Lillis Campbell *RIP*
 Mrs. Sally R. Campbell
 Ms. Veronica M. Campbell
 Mrs. Jeanne G. Canada
 Ms. Caroline R. Cancelosi
 Mrs. Virginia P. Candler
 Ms. Helen Cannistraci
 Dr. and Mrs. Richard Cannon
 Mr. and Mrs. Sterling J. Cardon, Jr.
 Peter and Marina Carney
 Mrs. Margarita Ledo Carreno
 Mr. and Mrs. Charles Carrington
 Mr. and Mrs. James K. Carroll
 Ms. Barbara Carter
 Dr. Mary R. Carter
 Mrs. Rosina McDonnell Carter
 Ms. Elizabeth A. Carty
 Ms. Josephine A. Caruso
 Mr. and Mrs. John N. Casbon
 Mrs. Elizabeth C. Caserta
 Mr. and Mrs. Edward A. Casey, Jr.
 Mrs. Eileen Cassidy
 Mrs. Susan Foy Cassimatis
 Mrs. Diane S. Catenaci
 Mrs. Judith Ann Cavallari
 Mr. and Mrs. Richard A. Cavallaro, Jr.
 Mrs. Jane R. Cavanaugh
 Mr. and Mrs. Gerald D. Chachere
 Mrs. Anna B. Charlton
 Mrs. Mary P. Chatfield
 Ms. Adele Chatfield-Taylor
 Ms. Carol Chen
 Mr. Francis S. Chen
 Ms. Sarah Chesemore
 Children of Mary-Bloomfield Hills
 Children of Mary-Grosse Pointe
 Mrs. Elaine M. Childs
 Mrs. Martha Z. Cho
 Ms. Keegan Chopin
 Ms. Nicole Christenson
 Dr. Young C. Chung
 Mr. and Mrs. Robert J. Ciapciak
 Ms. Kathrene H. Clark and
 Mr. James E. Schrader
- Mrs. Mary D. Clark
 Mrs. Paula S. Clauser
 Mr. and Mrs. Catesby Clay
 Mrs. Eleanor P. Clem
 Mrs. Mary Jane Clements
 Dr. and Mrs. Henry W. Clever, Jr.
 Mrs. Allison Kelly Clifton
 Ms. Carolyn A. Cline
 Anonymous
 Mr. and Mrs. Charles W. Clisbee
 Clorox Company
 Mrs. Jane M. Clune
 The W.C. Coale Family
 Mrs. Katharine A. Cobb
 Mrs. Laurie L. Cochran
 Mr. Edward C. Coffey
 Mrs. Patricia M. Colbert
 Ms. Constance D. Coleman
 Mrs. Sally C. Coleman
 Mrs. Patricia R. Colett
 Ms. Domini C. Collins
 Ms. Elizabeth L. Collins
 Ms. Janet Collins
 Ms. Maureen Collins
 Mrs. Ellen C. Collins-Boyce
 Ms. Jane G. Conarchy
 Anonymous
 Mr. and Mrs. Michael Conley
 Ms. Lisa W. Conlon
 Mrs. Jane Slade Connelly
 Mrs. Mary M. Connelly
 Mr. and Mrs. Lloyd Conners
 Ms. Shirley G. Connolly
 Ms. Patricia A. Connor
 Ms. Judith A. Conoyer
 Ms. Barbara Conway
 Ms. Kimberly J. Conway
 Mrs. Mary A. Conway
 Ms. Mary K. Cooley
 Mrs. Maria Eugenia Coombs
 Mrs. Barbara L. Cooney
 Ms. Elizabeth A. Cooney
 Ms. Mildred A. Copeland
 Mrs. Elizabeth M. Corbett
 Mr. and Mrs. Peter F. Corbin
 Ms. Mary R. Corcoran
 Mrs. Jane H. Cordell
 Mrs. Patricia Ellis Corderman
 Mrs. Kathleen R. Corrigan
 Mrs. Althea Corsini
 Mr. and Mrs. Kevin W. Cosgrove
 Ms. Priscilla A. Cosgrove
 Ms. Daniela Cosio
 Mrs. Alma Fisher Costello
 Mrs. Marian G. Costello

GREEN RIBBON DONOR CIRCLE, CONT.

Mrs. Mary G. Costello
 Mrs. Ann F. Cote
 Mrs. Duane E. Couch
 Mrs. Virginia B. Coudert
 Mrs. Dorothy S. Coughlin
 Ms. Janet Courtland
 Ms. Louise Cousin
 Ms. Susan M. Craft
 Anonymous
 Mrs. Elaine G. Crandall
 Mrs. Anne G. Crane
 Mr. and Mrs. C. Howard Crane, II
 Mrs. Margaret S. Crane
 Ms. Lola Sue Crawford
 Mrs. Mary Kirchner Crawford
 Ms. Suong Crawford
 Mrs. Jeanne Crayton
 Mrs. Jane Cronin
 Ms. Janet H. Crosby
 Mrs. Jolene A. Crosby
 Mrs. Marietta Vogt Crosby
 Mr. and Mrs. James E. Crowe, Jr.
 Ms. Christina A. Crowley
 Mrs. Martha Moore Crowley
 Mrs. Sheila G. Crowley
 Mr. Thomas K. Crumlish
 Mr. and Mrs. George W. Crump
 Mrs. Shirley E. Cummings
 Mr. and Mrs. Richard J. Cummins
 Mr. and Mrs. Robert A. Cunningham
 Mrs. Judith M. Curran
 Mrs. Margaret Curran
 Mrs. Catherine Curry and
 Mr. Andrés Gil
 Mr. and Mrs. Brian P. Curry
 Mrs. Suzanne Curt
 Mrs. Bethany Sage Curtis
 Mr. Robert A. Cushman
 Mrs. Mary Pat Czajkowski
 Mrs. Sandra J. Czecholinski
 Ms. Louise M. Dagit
 Mrs. Margaret M. Dagit
 Ms. Yvette N. D'Agrella
 Mrs. Maryelene Ryan Dailey
 Mrs. Ann B. Dames
 Ms. Violetta R. Daniels
 Ms. Cynthia Darling
 Mr. and Mrs. Scott Davidson
 Dr. and Mrs. J. Lawrence Davis
 Mr. and Mrs. James L. Davis, Jr.
 Mrs. Mary Versaggi Davis
 Mrs. Maryanne Davis
 Mr. and Mrs. Donald J. Dawson, Jr.

Mrs. Lenore de Csepel
 Ms. Christine De Voto
 Mrs. Anne R. Debs
 Mrs. Mary Ann L. Decker
 Mrs. Jane D. DeCory *RIP*
 Mrs. Sheila F. DeCosse
 Mrs. Leah DeJoseph
 Mr. and Mrs. John P. Del Favero
 Mrs. Olha Della Cava
 Mrs. Marguerite V. Demarest
 Anonymous
 Denton Grandchildren
 Ms. Mary H. Derbes
 Ms. Katherine Dervin
 Ms. Monique M. Desormeau
 Ms. M. Katherine D'Esposito
 Mrs. Arleen M. Deters
 Mrs. Caroline C. Detwiler
 Ms. Carol A. DeVincenzi
 Mrs. Teresa Devincenzi
 Mrs. Patricia T. Devron
 Mr. and Mrs. Gonzalo A. Diaz
 Mr. and Mrs. Ed Dickinson
 Anonymous
 Mrs. Frances J. Diebboll
 Mrs. Catherine B. Diebold
 Mrs. Mary Ann Diehr
 Mr. and Mrs. Edward D. Dienes
 Mr. and Mrs. Michael D. Dietz
 Kathleen M. Dooley DiGiovanna
 Mrs. Francesca Digirolamo
 Mr. J. Brian Dillon
 Ms. Patricia A. Dixon
 My Dang Do and Anh Thi To Do
 Mrs. Anna Fabbri Dodds
 Mrs. Margaret W. Dodge
 Mr. Gregg W. Doherty
 Mrs. Jean R. Dolan
 Mrs. Julie Burns Doll
 Mrs. Nadine Donahue
 Mrs. Joan E. Donaldson
 Ms. Doris Donnelly
 Mrs. Sarah Donnelly
 Ms. Catharine-Mary Donovan
 Ms. Deborah J. Donovan
 Deacon Dan Dorsey
 Ms. Judith A. Dow-Grant
 Stephen A. and Patricia L. Dowling
 Mrs. Jean H. Downey
 Miss Anne M. Doyle
 Mrs. Nancy G. Doyle
 Mrs. Carol Drake
 Mr. and Mrs. Kirk P. Dryden
 Mrs. Cathy Duane
 Duchesne Council #2951
 Knights of Columbus

Mrs. Ann M. Duer
 Mrs. Jeanne C. Duffy
 Mrs. Judith F. Duffy
 Mrs. Lily T. Duggan
 Anonymous
 Mrs. Ruth K. Dull
 Dr. Paula M. Duncan
 Mrs. Carroll C. Dunn
 Ms. Louise Meiere Dunn
 Mrs. Leonora Gilson Dursin
 Mrs. Nancy D. Dutton
 Ms. Barbara H. Dwyer
 Mrs. Rosemary Stuart Dwyer
 Mrs. Eleanor Gillespie Dyett
 Mr. and Mrs. Daniel A. Dziedzic
 Ms. Joan R. Eagleson
 Mrs. Christine M. Eastburn
 Ms. Cathy Easterly
 Dr. and Mrs. John E. Ebel
 Ms. Barbara M. Eberle
 Ms. Mariah E. Echele
 Mr. and Mrs. Sandy Echeveste
 Mrs. Rose M. Edel
 Mrs. Rozanne H. Edmondson
 Mr. and Mrs. Morgan H. Edwards
 Ms. Carol M. Eggers and
 Mr. Brian Haynsworth
 Ms. Susan Eggers and
 Mr. Robert Goldman
 Mrs. Kathy O'Callaghan Egloff
 Mrs. Diane Keller Eichhold
 Mrs. Kathryn S. Elkins
 Mrs. Patricia C. Ellingwood
 Mrs. Tracy H. Ellis
 Ms. Karen E. Emge
 Mrs. Joan Emmert
 Ms. Susan Engel
 Mrs. Catherine D. Enns
 Mrs. Ireta Enright
 Mrs. Nancy Roddy Epple
 Mr. Walter Ernest
 Mr. and Mrs. Philip F. Erzen
 Mrs. Suzanne M. Erskine
 eScrip
 Mrs. Judith M. Essex
 Mrs. Ilona Etlenyi
 Mrs. Catherine Eustis
 Mr. and Mrs. John D. Evans
 Ms. Peggy M. Evans
 Ms. Nancy H. Evans
 Mr. and Mrs. Peter O. Evans
 Mr. Timothy M. Evans
 Juliana L. Ewald *RIP*
 Mr. and Mrs. Timothy D. Fagin
 Mrs. Bonnie A. Faimon
 Mrs. Conchy Fajardo-Hopkins

Mr. and Mrs. Peter G. Fallon
 Ms. Meredith R. Falzone
 Ms. Kathleen K. Farley
 Mrs. Mary Lennon Farrell
 Mrs. Mary Pat Farrell-Diekemper
 Mrs. Rosemary A. Fasl
 Mr. William J. Fay
 Mrs. Constance L. Feely
 Mrs. Barbara Scott Feliciano
 Dr. and Mrs. Thomas P. Felic
 Ms. Claudia Fernandez
 Ms. Josefina Fernandez
 Dr. Jenny K. Ferrone
 Mr. and Mrs. Kenneth G. Fettig
 Mrs. Linda M. Fikes
 Mrs. Mizie Rochfort Finke
 Mr. Sean Finn
 Mrs. Dorsi Finnegan
 Mark and Kyle Finnegan
 Mrs. Mary C. Finnegan *RIP*
 Mr. Wilfred A. Finnegan
 Mrs. Martha L. Finney
 Mrs. Andrea B. Fisher
 Mrs. Barbara A. Fisher
 Mr. and Mrs. Charles Fitch
 Judith A. and John R. Fitzgerald
 Mrs. Mary Eileen F. Fitzgibbons
 Mrs. Mary Leonard Fitzpatrick
 Ms. Cecilia L. Flynn
 Dr. Rita J. Flynn
 Mr. Brendan J. Fogarty
 Mr. Kevin M. Fogarty
 Mrs. Mary T. Folsom
 Ms. Elizabeth H. Fong
 Mrs. Raymond E. Foote
 Mr. and Mrs. Pat S. Foran
 Hon. Anna C. Forder
 Mr. and Mrs. Ian W. Forrest, Sr.
 Mary and Stuart Forsyth
 Mrs. Nancy K. Forsyth
 Mrs. Thomas B. Foster, Jr.
 Mrs. Mary L. Fournie
 Ms. A. Sylvia Francis
 Ms. Marie C. Francis
 Mrs. Charlotte E. Landry Frank
 Mrs. Marilyn M. Frank
 Mr. and Mrs. William T. Free, Jr.
 Mrs. Carole A. Freeland
 Mrs. Frances Fremin
 Ms. Amy Friedlander
 Ms. Jo Ann M. Frost
 Mrs. Helen T. Fung
 Mrs. Jean Furay
 Mr. Richard J. Gaffney
 Ms. Helen A. Gagen

THANK YOU FOR YOUR GIFT

Dr. and Mrs. Ronald J. Gailun
 Mrs. Patricia Gallacher
 Mrs. Elizabeth S. Gallagher
 Ms. Janet Gallagher
 Mrs. Mary Elizabeth Gallo
 Mrs. Kathleen F. Garaudy
 Anonymous
 Andrea, Wes, and Hadley Gardner
 and Cindy Burch
 Mrs. Patricia F. Garffer
 Anonymous
 Ms. Amy E. Garrett
 Mrs. Harriet A. Garzero
 Mrs. Catherine B. Gautreau
 Mrs. Pamela M. Gaynor
 Sister Kathleen Geaney RSM
 Ms. Margaret H. Gebhard
 Ms. Mirta N. Geddo
 Mrs. Barbara B. Gee
 Dr. Linda L. Gehring
 Dr. Carol Gelderman
 Mrs. Yvonne Roth Gelpi *RIP*
 Mrs. Patricia K. Georgi
 Ms. Kathleen M. Geraghty
 Anonymous
 Ms. Alison Gerig
 Dr. Mary M. Germain
 Mrs. Michele J. Gerrits-Faeges
 Mrs. Angela Consiglio Gewinner
 Mrs. Mary Rose Ghislandi
 Mrs. Claire Vasilovik Giambalvo
 Ms. Leana C. Giannini
 Mr. and Mrs. Brian Giblin
 Mrs. Sophie C. Gibson
 Mrs. Rosemary H. Gidionsen
 Mrs. Juliana F. Gilheany
 Ms. Angela M. Gillespie
 Ms. Elise C. Gillette
 Ms. Elena S. Giralt
 Mrs. Judith R. Gittleman
 Mrs. Mary Ellen Glaser
 Mrs. Retta Jean Glavin
 Mr. and Mrs. Thomas D. Gleason
 Mrs. Anna Gleissner
 Ms. Marion E. Glennon
 Mr. Louis Glunz, III
 Mrs. Marguerite P. Goff
 Mr. and Mrs. William A. Golden, Jr.
 Ms. Christine Goletz
 Mr. and Mrs. Richard Gomez
 Dr. and Mrs. Thomas P. Gonsoulin
 Mrs. Dianne Gonzalez
 Mrs. Elaine Gordon
 Mrs. Angelia Gosney
 Mrs. Melanie Goudelocke
 Ms. Elizabeth A. Grady
 Mrs. Michelle O'Shea Grady
 Mrs. Bonnie Graham
 Mrs. Martha B. Graham
 Kathy Fitzgerald Grandsaert
 Gray, Ritter & Graham, P.C.
 Mrs. Alice A. Grayson
 Mr. and Mrs. Richard C. Green
 Mrs. Kathy Green
 Mr. and Mrs. Richard T. Greenough
 Ms. Diana M. Greenwood
 Mrs. Linda Speese Gregg
 Ms. Laura E. Griesedieck
 Mrs. Elizabeth L. Griesmer
 Mr. and Mrs. Gene Griffin
 Mrs. Shirley B. Griffin
 Mrs. Nancy-Jane Griffith
 Ms. Paula Grimm
 Mr. and Mrs. Richard R. Gronneck
 Mrs. Katy Semple Gross
 Ms. Mary Dean Grote
 Mrs. Therese Grote
 Mrs. Mary Kate Grzebin
 Ms. Elizabeth M. Guillory
 Dr. Mary K. Gumerlock
 Mrs. K. Marie Gumucio
 Ms. Elizabeth C. Gundlach
 Mr. and Mrs. William J. Guste, III
 Mr. Amado E. Gutierrez
 Mrs. H. Susan Hackmann
 Ms. Joan C. Hadden
 Mr. and Mrs. Paul Haggas
 Estate of Mariclare Haggerty
 Mrs. Carol V. Haggerty
 Mr. and Mrs. Richard A. Hall
 Mrs. Julie Lounz Haller
 Ms. Anita K. Halton
 Ms. Virginia M. Hamel
 Ms. V. Jaime Hamlin
 Anonymous
 Mr. Christophe L. Hanemann
 Mr. and Mrs. John Hanichak
 Ms. Meg Hanlon
 Anonymous
 Ms. Kathryn D. Hannon
 Mrs. Clara Hansbery
 Ms. Mary Jill Hanson
 Reverend Olga J. Hard
 Mrs. Nancy C. Hardart
 Mrs. Barbara Coveney Harkins
 Mr. and Mrs. Edward A. Haroian
 Ms. Anne Harrington
 Mr. David Harrington
 Ms. Ellen M. Harrington
 Ms. Virginia Harrison
 Ms. Claire-Marie Hart
 Mrs. Gertrude Hart
 Mrs. Liliane C. Hart
 Mary Elizabeth McKim Hotz Hartigan
 Ms. Ann H. Hartman
 Mrs. Jeanne E. Hartmans-Zerbiec
 Mrs. Leonard J. Hartnett
 Mrs. Joan Walet Hartson
 Ms. Nicole M. Hatoun
 Mrs. Susan S. Hatta
 Ms. Jacqueline Hauer
 Mrs. Susan A. K. Haun
 Anonymous
 Ms. Constance W. Hawkins
 Mrs. Carole F. Hayes
 Mrs. Pamela J. Hayes
 Mr. and Mrs. Jefferson V. Haynes
 Ms. Susan A. Hays
 Mr. and Mrs. Thomas F. Heafey
 Mr. and Mrs. Edward C. Heafey
 Mr. and Mrs. Thomas P. Heafey
 Mrs. Elaine Picetti Healy
 Kevin and Sally O'Connell Healy
 Ms. Marilee Hearn
 Ms. Christine M. Hedges
 Mary F. Hedges and Josephier Brown
 Ms. Patricia G. Heffernan
 Mrs. Mary Lee Heinrich
 Anonymous
 Ms. Marie-Christine Hellin
 Mrs. Ruth L. Henahan
 Ms. Mary C. Henkel and
 Mr. Patrick C. Larkin
 Mrs. Erin Heinemann Hennessey
 Mrs. Marie M. Hennessy
 Mrs. Janice H. Henrotin
 Ms. Betty J. Henry
 Ms. Elizabeth Hentschel
 Ms. Jennifer Henzler
 Mrs. Elizabeth A. Herguth
 Sister Marina Hernandez
 Ms. Laura M. Herrera
 Dr. and Mrs. David P. Hesse
 Mrs. Christine M. Heuring
 Mrs. Jeanne C. Hevesy
 Mrs. Abby H. Heydman
 Mrs. Laura J. Hickman
 Mr. and Mrs. J. William Hicks
 Mrs. Julia Hiemenz
 Mr. Brian G. Higgins
 Mrs. Sheila McCarthy Higgins
 Mr. Thomas D. Higgins
 Dr. Gabrielle R. Highstein
 Mr. Kenneth F. Higman
 Anonymous
 Mrs. Ann M. Hirsch
 Mrs. Kathleen A. Hirsch
 Ms. Rosalind Hirst
 Mr. William Hobbs
 Dr. Margaret Hochreiter
 Mrs. Eileen A. Hochstein-Altschul
 Mrs. Agatha Hoff
 Ms. Judy Hoffman
 Ms. Laurie Hoffman
 Mr. and Mrs. Ronald C. Hoffman
 Anonymous
 Ms. Margaret I. S. Hofstee
 Mr. and Mrs. William M. Hogan, III
 Ms. Michelle Hogan
 Mrs. Lisa Tompkins Holden
 Mrs. Mary Onie Holland
 Ms. Jane Hollo
 Ms. Kathleen M. Hollonbeck
 Mr. and Mrs. Daniel E. Holmes
 Dr. William C. Holmes
 Mrs. Susanne L. Holsen
 Mrs. Julie C. Holt
 Ms. Florentina Hooker
 Mr. and Mrs. Larry Horacek
 Ms. Joan Hornauer
 Ms. Lucille M. Hornby
 Elizabeth and Peter Houghton
 Ms. Catherine Gabriel Howard
 Ms. Margot M. Howard
 Mr. and Mrs. Richard W. Hoy
 Mrs. Geraldine Huang
 Dr. Joy Hudecz
 Ms. Susanne Huebner
 Mrs. Margery M. Huemmler
 Mrs. Mary A. Huffman
 Mrs. Harriet Hull
 Ms. Blanche M. Hunnewell
 Mr. Anthony Hunt
 Ms. Katherine H. Hunter
 Mrs. Patricia Del Hunter
 Mr. Andy Huntington
 Mr. Christopher J. Husson
 Mrs. Kathryn R. Hutcheson
 Ms. Karin E. Huth
 Mrs. Joanne O. Hynek
 Mrs. Marie Elizabeth B. Igleheart
 Mr. and Mrs. Mark D. Innes
 Mr. and Mrs. David Ish
 Mr. and Mrs. Gary L. Jacobs
 Mrs. Patricia B. Jacobs
 Mrs. Corey H. Jacobson
 Mrs. Ayleen James
 Mrs. Judith H. Janowiak

CONTINUED ON PAGE 20

CHAPTER CALL 2 – TO LIVE MORE HUMANLY



► On the left is Betty Renard, RSCJ, longtime staff member of the **Thensted Center**, with director Julia Richard. The Center was founded in 1982 by the Society of the Sacred Heart to provide services for young people and the elderly in the rural setting of Grand Coteau, LA.

► **The Office of Justice, Peace & Integrity of Creation (JPIC)**

serves as a resource to RSCJ and colleagues in our mutual ongoing efforts to achieve balance and “right relationship” among all people and the earth we share. Pictured are Diane Roche, RSCJ, (director of the JPIC office) and Daniel Behnen during the People’s Climate March. Daniel came from Vermont and stayed at the Stuart Center with other Catholic climate activists the night before the March.



▲ Charlize Hebert, senior at Convent of the Sacred Heart 91st Street in New York, NY, is pictured with Sheila Smith, RSCJ, **NGO Representative** for the International Society of the Sacred Heart at the **United Nations in New York**. Charlize did a summer internship with Sacred Heart at the UN. Here they discuss the development of her project on human trafficking awareness for high school students. (See more at sacredheartattheun.org.)

In the radical style of Jesus of Nazareth, we wish to be in closer relationship as sisters with one another and with others; we wish to be simpler, more human and closer to people and their experience, in order to show forth the joyful and compassionate face of God and to be at the service of Life, wherever we are sent.



◀ **Duchesne House for volunteers in New Orleans, LA**, hosts large numbers of high school and college students and teachers to continue to help rebuild New Orleans after Hurricane Katrina. Pictured here are students from Emmanuel College. They visited the Whitney Plantation from the viewpoint of enslaved persons with Reverend Denise Williams, educator and healer (seated second from the right).



◀ **Students of St. Ignatius in San Francisco** met with a neighbor of Duchesne House (New Orleans), Chief David Montana (center, standing), a Mardi Gras Indian whose family works to preserve the traditionally African American way to participate in the formerly segregated celebration of Mardi Gras. Elaborate beaded and feathered costumes take a year to make my hand and are proudly sewn by the wearer. Singing and drumming with a special repertoire of songs is part of the tradition. Bonnie Kearney, RSCJ, is seated on the right.

NETWORK SERVICE PROJECTS

GREEN RIBBON DONOR CIRCLE, CONT.

Elizabeth and Robert Jardeleza
 Ms. Madeleine Jardeleza
 Ms. Kathryn A. Jehle and
 Mr. Paul E. Campbell
 Mrs. Phyllis T. Jepson
 Ms. Rose Marie Jezak
 Mrs. Margaret Johannesman
 Mrs. Barbara Johansen
 Ms. Mary Johansen
 Mrs. Elizabeth M. Johnson
 Mrs. Gina Purlia Johnson
 Ms. Katherine B. Johnson
 Mrs. Patricia Bowler Johnson
 Ms. Sandra S. Johnson
 Mr. Walter E. Johnson
 Ms. Jane Johnston
 Ms. Jessica Q. Johnston
 Mrs. Amy Jo Jones
 Ms. Barbara J. Jones
 Mrs. Carolyn O. Jones
 Mrs. Cecile M. Jones
 Mrs. Ann S. Jordan
 Ms. Kathryn J. Jordan
 Ms. Nancy Jorgensen
 Josephinum Academy of the Sacred Heart
 Mrs. Cynthia Chooljian Jost
 The JPMorgan Chase Foundation
 Mrs. Marjorie M. Julian
 Mrs. Jane F. Jurkovich
 Father Edward S. Kacerguis
 Mrs. Karl P. Kadon, III
 Mrs. Annette T. Kaier
 Mrs. John J. Kalagher
 Ms. Ruth Kalin
 Mr. and Mrs. Olen A. Kalkus
 Ms. Patricia A. Kamlin
 Mrs. Mary S. Kamps
 Mrs. Anne R. Kane
 Mrs. Carol McKenna Kane
 Ms. Mary A. Kane
 Mr. and Mrs. John J. Kaplan, Sr.
 Mrs. Berta Boix Kapoor
 Mrs. Maggie Sieger Kaspura
 Katharyn Curtin Readers
 Mrs. Evelyn Katz
 Ms. Lynn Kearney
 Mrs. Dolores M. Keefe
 Mrs. Paris Keena Scott
 The Ehm / Keene Family
 Ruth and James H. Keene III
 Mrs. J. Caroline Kelleher
 Mr. and Mrs. Gerald Kelleher
 Mrs. Mary Elizabeth Kelley

Ms. Anne M. Kelly
 Ms. Maggie Pfaff Kelly
 Mrs. Margaret M. Kelly
 Mrs. Margaret M. Kelly
 Mark, Christine and Lisabeth Kelly
 Mrs. Maureen E. Kelly
 Reverend Philip Kelly
 Mrs. Rosann D. Kelly
 Ms. Sharon A. Kelsch
 Mrs. Margaret Kemmerly
 Hon. Susan L. Kennedy Sullivan
 Mrs. Catherine C. Kennedy
 Mrs. Roma A. Kent
 Miss Katharine H. Kernan
 Dr. Nancy A. Kernan
 Mrs. Mary Ann Kerwin, Esq.
 Mrs. Francesca Kever
 Mrs. Mary Ellen Keegan Keyser
 Mrs. Sheila D. Kiernan
 Mrs. Carmen Kilcullen
 Mr. and Mrs. John M. Kinabrew, III
 Mr. and Mrs. William S. Kincaid
 Dr. Robert and Adelaide Kistner
 Mr. and Mrs. William M. Kizer, Jr.
 Anonymous
 Angel and Fred Kleinbub
 Ms. Linda Kline
 Ms. Diane Klosterman
 Mrs. Catherine Knapik
 Dr. and Mrs. Richard A. Knazek
 Ashley and Bryan Knopp
 Mrs. Jane R. Knudson
 Ms. Mary Frances Koch
 Mrs. Kathleen S. Kocsis
 Mrs. Mary Ann Kocurek
 Mrs. Geraldine C. Koesters
 Mrs. Hwawoo Lee Koh
 Mrs. Jacqueline E. Kohler
 Mr. Vincent A. Kolber
 Mrs. Helen Kondolf
 Mrs. Nancy L. Kornmeier
 Mrs. Cynthia G. Koss
 Mrs. Honora L. Koster
 Mr. and Mrs. Gregory Kozak
 Mr. Brian Kracyla
 Mrs. Marion L. Kraemer
 Ms. Susan J. Krakora
 Mrs. Maria Kramar
 Dr. and Mrs. Bernard L. Kratochvil
 Ms. Susan M. Kratochvil
 Mrs. Linda L. Kraus
 Mrs. Ellen L. Krease
 Mr. and Mrs. Robert E. Kriegshauser
 Hon. Alexis G. Krot
 Mrs. Donald Kruike



Students and faculty from Network of Sacred Heart Schools around the country gathered in New Orleans, LA, for the Healthy Waters and Coastal Restoration Network Service Project.



Healthy Waters Service Project participants designing a mural



Carrollton School of the Sacred Heart, Miami, FL: In support of Sacred Heart Network Goals 3 and 5, students learned the features and limits of the NAO Humanoid robots and the ease with which the system can be used to introduce and integrate technology for marginalized, inner-city children.



Academy of the Sacred Heart, Bloomfield Hills, MI: Students participated in the Helping Hungry Hearts Service Project focused on learning about hunger in the Detroit metro area. They volunteered at or visited organizations to help alleviate hunger and prepared and distributed lunch to children at Crossroads of Michigan in Detroit.



Josephinum Academy of the Sacred Heart, Chicago, IL: Almost 400,000 people in the city of Chicago lack access to fresh and healthy food. Students explored the reality, causes and methods of combating urban food deserts. They volunteered at the Greater Chicago Food Depository and a local food pantry to evaluate the quality of food available to those in need.



Students took a tour of The Plant, a former meat-packing plant that now houses 20 food businesses all focused on reusing waste. The tour was coordinated by Plant Chicago, the nonprofit operating out of the building. For more information on Plant Chicago programs, visit plantchicago.org.

- Mrs. Barbara Catoggio Kullen
 Miss Ann T. Kullman
 Ms. Edith J. Kurie
 Mrs. Mary Kay Kurzweg
 Mr. and Mrs. R. Scott LaRue
 Mrs. Agnes La Storia
 Ms. Sheila LaFalce
 Mrs. Gertrude C. LaFerté
 Mrs. Angela LaGrange Scott
 Mrs. Jeanne Carr Lamb
 Ms. Margaret B. Lamb
 Dr. Ann Lammers-Lasek
 Ms. Mary W. Lamy
 Dr. Joan S. Lanahan
 Mrs. Virginia Flynn Landblom
 Mr. and Mrs. Thomas F. Landers
 Mrs. Elizabeth M. Landis
 Sister Lorraine Landry
 Linda Landucci McMahon and Family
 Mrs. Joan S. Lane
 Dr. and Mrs. James J. Lane, Jr.
 Mrs. Kathleen B. Langdon
 Mr. and Mrs. Michael S. Langenfeld
 Ms. Mary Jane Larkin
 Mrs. Mary F. Larkin
 Mrs. Alfred V. Larrenaga
 Mr. and Mrs. John M. Larson
 Mrs. Viola Grace Latall
 Mrs. Christine E. Lattin
 Ms. Florence Lau
 Mrs. Rosemary M. Laughlin
 Ms. Judith L. Lavallee
 Mrs. Rosemary C. Lavelle
 Ms. Abigail Lawrence
 Ms. Molly B. Lawrence
 Mr. Robert Lawrence
 Mr. Scott W. C. Lawrence
 Mrs. Joanna D. Lawton
 Ms. Mary K. Lawton
 Mr. and Mrs. Thomas P. Lawton
 Miss Jane A. Layman
 Mr. Stephen A. Layman
 Ms. Nancy Leamy
 Mrs. Zelia Stewart Lebeau
 Mira and Andrzej Lechowicz
 Mrs. Elizabeth B. Leckie
 Ms. Fay Ling Lee
 Mrs. Isabel L. Lee
 Ms. Linda Lee
 Ms. Marilyn A. Legnini
 Mrs. Nora Leibold
 Mr. and Mrs. Joseph M. Leinhauser
 Ms. Elizabeth Leonard
 Mrs. Martha S. Lepore
 Ms. Cora B. LePorin
 Mrs. Margaret D. Liautaud
 Dr. Joan Liddell
 Mrs. Theresa Noonan Liddell
 Mrs. Mary Olive C. Lien
 Ms. Lucy G. Liggert
 Dr. Margaret M. Liggert
 Mrs. Mary C. Lind
 Ms. Mary H. Lindsay
 Mrs. Anne M. Linton-Paganelli
 Mrs. Norma P. Little
 Ms. Catherine Littlefield
 Mr. and Mrs. Robert A. Littlefield
 Mrs. Mary P. Llewellyn
 Ms. Catherine D. Locke
 Mrs. Helen Moran Locke
 Ms. Deborah M. Lodge
 Mrs. Moyra A. Loeffler
 Mrs. June Logan
 Mr. Thomas A. Logsdon
 Mrs. Mary V. Longrais
 Mrs. Eveleen K. Lopez
 Ms. Julia I. Lopez
 Mrs. Elizabeth K. Lorber
 Mrs. Nancy Brizzolara Lorenz
 Mrs. Jane Hanley Lotz
 The Loudmouth Gang
 Ms. Laurie Loughlin
 Mrs. Kathleen D. Lubawski
 Ms. Bertha A. Lubert
 Mrs. Ann Ludwig
 Mr. and Mrs. Dennis Lynch
 Mrs. Helen C. Lynch
 Ms. Mary Elizabeth Lynch
 Ms. Eliza C. Lynn
 Mr. and Mrs. Theodore J. MacDonald, Jr.
 Mr. Frank J. Mack
 Mrs. Linda G. MacKay
 Mrs. Irene E. Mackenroth
 Mr. and Mrs. Donald S. MacLean
 Mrs. Mary M. MacMillan
 Ms. Margaret Fuller MacNeil
 Macy's Foundation
 Mrs. Sheila P. Madden
 Sandy and Arnold Madigan
 Mr. and Mrs. John L. Maginn
 Mrs. Josephine E. Maguire
 Ms. Barbara G. Mahany
 Mrs. Antonia Mahoney
 Ms. Carolyn Mahoney
 Mr. and Mrs. James J. Mahoney, Jr.
 Kathy and Jack Mahoney
 Ms. Sally T. Mahoney
 Mr. John Mak

CONTINUED ON PAGE 24

CHAPTER CALL 3 – TO CREATE SILENCE

► **Sophie's Well** is a spirituality ministry of the USC Province which offers spiritual direction and programming including the famous **Busy Person's Retreats** that are held in a variety of settings with our colleagues in mission. In the 2016-17 year, 22 retreats were held in 21 locations with 331 participants. Pictured here are retreatants and the sisters who helped direct the Busy Person's Retreat for parents at Schools of the Sacred Heart, Atherton, CA: Sisters Kathy Dolan, Mary Ann Flynn, Helen Rosenthal, Clare Pratt, and Sis Flynn. Sophie's Well is directed by Sisters Kathy McGrath, Jane O'Shaughnessy and Lisa Buscher.



► **Temenos groups at Sophie Barat House** in New Orleans, LA, combine presentations on aspects of the faith journey with quiet time and reverent sharing. Facilitators are Sister Jane McKinlay and John Gniady.



► A ministry of the Society of The Sacred Heart, United States-Canada Province, **Barat Spirituality Centre** is located in the heart of Halifax, Nova Scotia. The Centre works in collaboration with RSCJ and other individuals and groups from within the Halifax-Yarmouth Archdiocese and beyond to offer a variety of enriching programs and opportunities. Barat Spirituality Centre has facilities for group gatherings of different sizes, food prep and dining, and overnight accommodations for seven. Pictured here is the chapel at the Centre.



To deepen our interior life, our capacity for contemplation and for listening to the heartbeat of God in ourselves and in our world; to discern in silence and welcome the action of the Spirit that transforms us, energizes us, and calls us to live our prophetic and educational mission.



▲ **The Spiritual Ministry Center** is a quiet place for prayer in Ocean Beach, a residential neighborhood in San Diego, CA. Seekers of all faiths are welcome to spend time at this small retreat house, reflecting on their spiritual journey. Cliffs overlooking the Pacific, a pier and sandy beach provide closer contact with the sea and wonderful places to walk. Spiritual direction, directed retreats, the Spiritual Exercises of St. Ignatius and a variety of spiritual programs are offered.

◀ Helen Rosenthal, RSCJ, Oakwood, Atherton, CA

GREEN RIBBON DONOR CIRCLE, CONT.

Ms. Eleanor W. Malone
 Gay and Mark Maloney
 Mrs. Catherine M. Manchester
 Miss Mary J. Manhart
 Mrs. Virginia D. Manuel
 Ms. Virgilia F. Mapa
 Ms. Jennifer Mardel
 Ms. Marcia D. Marino
 Mr. and Mrs. Matthew P. Marino, Jr.
 Mrs. Cynthia D. Marler
 Mr. and Mrs. Ivan Maroevich, Jr.
 Mrs. Mary Rose Marquart
 Mr. and Mrs. Adolph J. Marr
 Mrs. Elaine Martin
 Ms. Genevieve C. Martin
 Mrs. Pauline S. Martin
 Ms. Patricia A. Mathes
 Dr. and Mrs. John J. Matoole
 Ms. Emma E. Mattesky
 Mrs. Barbara Freschi Matteson
 Mrs. Natalie M. Matthews
 Ms. Eileen C. Mayer
 Ms. Elizabeth P. Maze
 The Mazzucco Family
 Mr. Andrew McAgnon
 Mrs. Anne V. McAlister
 Mr. and Mrs. Lee McAllister
 Mrs. Jane Reiss McAniff
 Mrs. Anne F. McCabe
 Mrs. Mary Joanne McCabe
 Mrs. Dolores McCaffery
 Dr. and Mrs. Robert G. McCairns, Jr.
 Mrs. Vita N. McCall
 Ms. Ruth McCann
 Mrs. Judith R. McCarren
 Mrs. Anne S. McCarthy
 Ms. Carol A. McCarthy
 Sister Doyle Patricia McCarthy
 Mrs. Margaret S. McCarthy
 Mrs. Mary A. McCarthy
 Mrs. Mary A. McCarthy
 Mrs. Patricia B. McCarthy
 Mrs. Colette K. McCarty
 Mrs. Patricia L. McCaskill
 Sister Margaret McCleary, SP
 Ms. Susan C. McClellan
 Ms. Felicity McClenachan
 Ms. Corinne E. McClintic
 Mrs. Ann C. McConnachie
 Mrs. Elizabeth J. McCormack
 Ms. Irene E. McCourt
 Mrs. Mary R. McDaniel
 Mrs. Stanley McDermott, Jr.

Mrs. Joanne S. McDermott
 Mrs. Barbara Byrnes McDonald
 Ms. Frances L. McDonald
 Mrs. Maria J. McDonald
 Mrs. Marianne McDonald
 Mrs. Patricia P. McDonald
 Mrs. Anne F. McDonnell
 Mrs. Mary Diane McDonough
 Ms. Judy McDougle
 Dr. Alice McDowell
 Mrs. Peggy Padberg McGarry
 Mr. and Mrs. E. Neal McGettigan
 Mr. and Mrs. Gerald J. McGivern
 Ms. Patty-Jane McGlynn
 Mr. and Mrs. John G. McGoldrick
 Mrs. Claire M. McGowan
 Mrs. Mary Goldmann McGowan
 Mrs. Blanche McGrath
 Mrs. Eileen R. McGrath
 Ms. Regina W. McGrath
 Mr. Thomas F. McGurl
 Ms. Rose P. McHale
 Marion V. McKay and the
 W.P. Adkins family
 Mrs. June R. McKenna
 Mrs. Mary Sue McKenna
 Mrs. Marina G. McKenzie
 Mr. and Mrs. Daniel D. McKenzie
 Mr. Elbert F. McKinlay
 Jackie, Joe and Tim McLaren
 Mr. G. Robert McLaughlin
 Mrs. Mary Ann McLean
 Ms. Elizabeth McLoughlin
 Ms. Alice M. McMahon
 Mrs. Maureen D. McMahon
 Dr. Nancy M. McMahon
 Mrs. Suzanne McMahon
 The McMorrow Family
 Mrs. Theresa M. McMorrow
 Mrs. Jane G. McMullen
 Mrs. Mary D. McNeill
 Ms. Margaret K. McRaith
 Hon. Maura B. McShane
 Mrs. Shadlee Jackson McTaggart
 Ms. Virginia Meagher
 Ms. Christine M. Meier
 Mrs. Gisela Meijer
 Mrs. Mary Meissner
 Mrs. Ann L. Melfi
 Dr. Elizabeth Menaghan
 Mrs. Joan E. Mendelson
 Ms. Amanda M. Mengden
 Ms. Anne E. Mengden
 Mrs. Maria M. Menocal
 Mrs. Maureen W. Mercier



Each morning after the 9:00 liturgy, Clare Pratt, RSCJ, director of the Oakwood community, visits the Barat community for a sing along with residents.



Trudy Considine, RSCJ, with third grade readers who attend Sacred Heart Schools, Atherton, CA



Patty Creedon, RSM, director of Oakwood, and Laura Beeson, director of activities, help provide a full and active life for the Oakwood residents.



Sisters Kathleen Sullivan and Pat Shaffer rarely miss a sporting event at Sacred Heart School, Atherton.



Oakwood residence and staff members gather together to experience the solar eclipse on August 21, 2017.



Members of Oakwood's Health Wellness staff, back row (L to R): Navy Calibo, Jesse Cadiz, Gloria Correa and Bitalina Gutierrez. Front row (L to R): Rosie Angel, Julissa Cisneros and Paula Galdamez



Staff recognition celebration, "in the Spirit of Aloha," at Oakwood (L to R): Lani Cordoviz, Cindy Tran, Adolph Granato, Esmeralda Gallardo, Nubia and Mateo Jacobo, Maria Velazquez and Bessy Rivera

- Mrs. Irene R. Meschia
 Mrs. Kathy Meunier
 Mrs. Geraldine Meyer
 Mrs. Janet R. Meyering
 Anonymous
 Mrs. Judith Michalek
 Ms. Betty B. Michot
 Mrs. Pauline D. Mifsud
 Mr. Benjamin Mihovk
 The Mikita Foundation
 Mrs. Ann G. Miller
 Mrs. Catherine C. Miller
 Anonymous
 Mrs. Ellen S. Miller
 Kenneth E. Miller
 Mrs. Marcia L. Miller
 Mrs. Margaret Miller
 Shirley Miller, RSCJ
 Mr. William H. Miller
 Ms. Anne B. Milligan
 Mrs. Kay Mills
 Mrs. Helen Hall Mineau
 Col. and Mrs. John F. Miniclier
 Dr. Joan Minninger
 Mr. and Mrs. James Minogue
 Mrs. Catherine Miskell
 Ms. Marianne B. Mitchell
 Mrs. Patricia Mitchell
 Mr. and Mrs. Raymond Mlecko
 Mr. John E. Mona
 Mrs. Elizabeth H. Monahan
 Mrs. Katie Monen-Pieper
 Mrs. Mary Mongan
 Mrs. Jane E. Monnich
 Dr. and Mrs. John W. Monson
 Dr. and Mrs. David M. Montgomery
 Ms. Jean F. Mooney
 Mrs. Sue S. Mooney
 Mrs. Anne G. Moore
 Miss Elizabeth D. Moore
 Mrs. Mary Beth Burch Moorhead
 Mrs. Ruth Ann Moorman
 Ms. Kathleen R. Moran
 Ms. Kathleen Moretti
 Ms. Joann K. Morey
 Mr. and Mrs. George Moriarty, Jr.
 Mrs. Susan Stony Morris
 Mrs. Suzanne N. Morris
 Mrs. Sally M. Morrison
 Ms. Colleen P. Morrissey
 Mr. and Mrs. Ernest R. Moser
 Ms. Anne Mousseau
 Ms. Carolyn A. Moynihan
 Mr. Michael Much
 Mr. and Mrs. Randall T. Mudge
 Ms. Lauren Aliano Mueller
 Ms. Harriet E. Mullaney
 Mrs. Katheryn Mullaney
 Mr. John R. Mulroy, Jr.
 Ms. Barbara L. Mundt
 Mrs. Helen A. Munter-Farran
 Ms. Veronica Muoio
 Anne Gallagher Murphy
 Ms. Linda R. Murphy
 Dr. Mary H. Murphy
 Mrs. Nancy H. Murphy
 Mrs. Noël G. Murphy
 Mr. and Mrs. Philip M. Murphy
 Mrs. Sally Fitzgerald Murphy
 Mrs. Sara Jane Murphy
 Ms. Sharon D. Murphy
 Ms. Susan S. Murphy
 Patricia and John Murray
 Ms. Katherine Murtaugh
 Mutual of America Foundation
 Ms. Mary Louise Myers and
 Mr. Hartley Cravens
 Dr. Perla Myers
 Mrs. Elizabeth J. Myers-Buhite
 Mr. and Mrs. R. Gregg Nabhan
 Ms. Anita M. Nagler and
 Mr. Robert Moyer
 Ms. Isabel M. Naphin
 Mrs. Carol Nardoza Wheeler
 Mrs. M. Sue Nash
 Mrs. Graciela Nearing
 Mr. John R. Neary
 Ms. Laurie Neff
 Dr. Lynne Neitzschman
 Barbara and Peter Neroni
 Ms. Joan C. W. Nestler
 Dr. Ruth A. Neville
 Mrs. Marivi Nevin
 Mary Kuhn Newton
 Mr. and Mrs. Anthony A. Nichols
 Mrs. Jacqueline T. Niekamp
 Mrs. Mary Nitsche
 Ms. Marie Louise Nix
 Mrs. Julia C. Norcross
 Ms. Marcia V. Norris
 The Norvik Family
 Mrs. James G. Nourse
 Mr. James L. Nouse
 Mrs. Carol Ann Bocci Nulk
 Mr. and Mrs. William E. Nunn
 Ms. Susan K. Nunnally
 Dr. Theresa N. Obermeyer
 Ms. Gloria S. O'Brien
 Mrs. Marie D. O'Brien
 Ms. Maureen S. O'Brien
 Mrs. Mary Lee O'Bryan

GREEN RIBBON DONOR CIRCLE, CONT.

Mr. John S. O'Callaghan
 Mr. Kevin O'Callaghan
 Mrs. Nancy C. Ochs
 Jane Burke O'Connell
 Ms. Jody O'Connell
 Mrs. Alice C. O'Connor
 Anonymous
 Dr. Kim O'Connor
 Mrs. Lucille Hartigan O'Connor
 Mrs. Linda Hogan O'Connor
 Ms. Mary Ellen O'Connor
 Mr. Ralph O'Connor
 Ms. Jean O'Conor and Mr. Kent Shaw
 Mrs. Harry F. Oderman
 Mr. Shawn O'Donnell
 Dennis and Jeanne Burke O'Fallon
 Mrs. Mary E. O'Grady
 Ms. Doranne T. O'Hara
 Ms. Phyllis O'Hara
 Mrs. Mary I. O'Herron
 Ms. Sharon L. Ohlms
 Mrs. Sarah A. O'Keefe
 Mrs. Valerie O'Keefe
 Miss Terry J. Okolowich
 Mrs. Frances P. O'Leary
 Mr. and Mrs. Scott P. Olson
 Mrs. Sally O'Meallie
 Mrs. Michelle Lastreto O'Neal
 Mr. and Mrs. Jerome H. O'Neil, Jr.
 Ms. Joan D. O'Neil
 Ms. Julie Anne O'Neill
 Ms. Nancy O'Neill
 Ms. Patricia A. O'Neill
 Mr. and Mrs. Alex D. Opiela, Jr.
 Mrs. Kathleen B. O'Regan
 Mrs. Susan G. O'Rourke Hastings
 Mrs. Karen A. O'Rourke
 Ms. Patricia Ortiz
 Ms. Marie E. O'Ryan
 Lynn Osband
 Ms. Ann O'Shea
 Mrs. James O'Sullivan
 Ms. Sara Oswald
 Terrence J. and Sheila M. O'Toole
 Mrs. Cathleen M. Ott
 Mrs. Kathleen Owen
 Ms. Shirley Owen
 Mrs. Debra C. Packard
 Anonymous
 Ms. Carolina Palacios
 Ms. Linda Palin
 Mrs. Josephine O'Leary Pallasch
 Mrs. Ragnhild S. Palmieri

Mrs. Agatha Pao
 Dr. Lilliam Barrios Paoli
 Mrs. Norma A. Paolini
 Ms. Georgina M. Pardo
 Mr. and Mrs. Stanley T. Pardo
 Mimi Creighton Paris for the
 Gallagher Foundation
 Mrs. Constance Parker
 Mrs. Maria Isabel Parra and
 Mr. Jose L. Roig-Greene
 Mrs. Barbara H. Parrish
 Ms. Laura M. Patti
 Mr. and Mrs. H. James Paugh
 Mrs. Ellen Peebles
 Ms. Titsa Fotopulos Pelzman
 Dr. Heidi M. Pendleton
 Mrs. Helen M. Penton
 Dr. Laura A. Perell
 Mrs. Linda Perez
 Mrs. Tracy H. Perez
 Mrs. Aimee J. Perkins
 Mrs. Christine Perkins
 Mr. and Mrs. Claiborne Perrilliat, Jr.
 Ms. Kay Perring
 Mrs. Ellen C. Peter
 Mrs. Jean Murray Peterson
 Mr. and Mrs. George F. Peterson
 Dr. Marcy F. Petrini
 Mrs. Nancy D. Petry
 Mrs. Ruth Petzold
 Ms. Vivian H. Phan
 Ms. Mary Ellen Phelan
 Mrs. Mary Jane Phelan
 Mrs. Gretchen Philippi
 Mrs. K. Yvonne Bispo Phillips
 Ms. Sandra Chew Phillips
 Dr. Frances N. Phipps and
 Mr. Harold Phipps
 Mr. William B. Picotte
 Mrs. Maria Fassio Pignati
 Mrs. Gwen L. Pike
 Ms. Leah Pillsbury
 Mr. and Mrs. Mark B. Pitchford
 Mrs. Elizabeth C. Pitera
 Plancorp, LLC
 Dr. Lauren B. Plumer
 Poche' Construction Inc.
 Ms. Patricia E. Poloski
 Ms. Judy Ponath
 Mr. and Mrs. Kenneth Ponce
 Mrs. Mary Winslow Poole
 Mrs. Eileen K. Pope
 Mr. Ralph M. Porter
 Mrs. Tricia Post
 Ms. Kathleen M. Potts
 Mrs. Howard D. Powell



The Kenwood property in Albany, NY, owned by the Society since 1859, was sold on August 21, 2017. It served as a boarding and day school, noviceship, elder care facility, ecumenical house of prayer, child development center and Doane Stuart school. RSCJ, former RSCJ, alumni, associates, staff, past chaplains and friends gathered in the Chapel for prayer and sharing of memories.



Sisters Mary Loretta Busch, Angie Bayo and Pat Reid, Abba House, Albany, NY



Joan Gannon, RSCJ, director of Teresian House community, Albany, NY, with Sisters Betty Renard and Ann Johnston



Meg Canty, RSCJ (right), coordinator of Avila Lodge community in Albany with Bunny Flick, RSCJ, director of the Spiritual Ministry Center in San Diego



Maria Buonato, RSCJ, director of Abba House community



Loretta Somerville, RSCJ



Oonah Ryan, RSCJ



Gertrude Cosenke, RSCJ

- Mrs. Sofia Powell-Cosio PA
- The Prabhakaran Family
- Mrs. Gloria M. Prado
- Dr. Charlotte W. Pratt
- Clare Pratt, RSCJ
- Mrs. Georgine Drees Premo
- Mrs. Barbara C. Price
- Mrs. Carolyn L. Price
- Ms. Patricia Prince
- Mrs. Annette G. Pringle
- Mrs. Mary Jane K. Proctor
- Mrs. Carolyn Puricelli-Boyd
- Mr. J. David Quilter, CFE
- Mrs. Camilla Reid Kuhn Quinn
- Mrs. Mary Joan M. Quinn
- Ms. Jean E. Quinnan
- Mrs. Alicia Quirk
- Ms. Mary Ellen Quirk
- Mr. and Mrs. Robert J. Raffo
- Mrs. Barbara Gobbo Rainaldi
- Mr. Jesus Ramos
- Mrs. Michelle Randazza
- Ms. Kathleen C. Randol
- Mrs. Patricia Rashid
- Ms. Connie Fitzpatrick Rasmussen
- Ms. Lucy D. Rauch
- Dr. Mary Ann Re
- Ms. Judith A. Reach Condit
- Mr. John P. Reardon, Jr.
- The Reardon Family
- Lt. General and Mrs. Clifford H. Rees, Jr.
- Ms. Carol M. Regenauer
- The Regis School of the Sacred Heart
- Mr. and Mrs. Richard A. Reichle
- Mrs. Madeleine Reilly
- Ms. Anne Reimel
- Mrs. Patricia Reinkemeyer
- Mr. and Mrs. Jerry W. Reinstatler
- Sister Irma Patricia Reiss
- Mr. and Mrs. David Reitman
- Ms. Laura Renker
- Ms. Mary Reynolds
- Ms. Yvonne Reynolds
- Tony and Ellen Hannigan Ribaudo
- Mr. and Mrs. Michael Rice
- Ms. Mary Kathleen Rice
- Ms. Patricia J. Rice
- Mrs. Patricia W. Rice
- Ms. Anne-Marie R. Richards
- Mrs. Dorothy E. Richardson
- Mrs. Ronald J. Ricossa
- Mrs. Sheila Rider
- Dr. and Mrs. Gerald E. Ries
- Ms. Carol Rigolot
- Mrs. Mary C. Ringel
- Mrs. Maribeth S. Riordan
- Ms. Angela M. Robbiano
- Mrs. Mary Ann Robbiano
- Dr. Martha A. Robbins
- Anonymous
- Mr. Patrick J. Roberts
- Mrs. Barbara C. Robinson
- Ms. Grace Briggs Robinson
- Mrs. Jean S. Robinson
- Mr. and Mrs. Peter C. Robinson
- Starr M. Robinson and Jo Cohen
- Mrs. Mary Roche
- Mrs. Maribeth M. Rodee
- Ms. Dolores Elena Rodriguez
- Mrs. Marianne Roedersheimer
- Ms. Sally J. Rogers
- Mrs. Mary E. Romson
- Mrs. Mary Ann Roncker
- Mrs. Oren Root
- Emmet and Mary Frances Root
- Mr. Oren Root

GREEN RIBBON DONOR CIRCLE, CONT.

Anonymous
 Mr. and Mrs. John L. Rosenthal
 Ms. Dorothy M. Ross
 Mrs. Joan P. Rossi
 Mrs. Rosemary Rotelli
 Mrs. Dorothy Rotolo
 Ms. Maureen L. Roxe
 Mrs. Irma A. Rozynski
 Mr. and Mrs. John Ruckert
 Mr. and Mrs. Paul G. Ruff, III
 Mrs. Judith Y. Runnette
 Mrs. Jean S. Russell
 John Mosby Russell
 Col. and Mrs. Charles R. Rutherford, Sr.
 Mr. and Mrs. Winthrop Rutherford, Jr.
 Mrs. Melanie Martin Ryals
 Mrs. Carol Ann Ryan
 Mr. and Mrs. Dennis Ryan
 Mrs. Helen B. Ryan
 Mrs. Helen F. Ryan
 Ms. Kyla Ryan
 Mrs. Marilyn C. Ryan
 Mr. and Mrs. Mark E. Ryan
 Mrs. Nancy Ryan
 Mrs. Roberta A. Ryan
 Mrs. Helen Rylee
 Mr. and Mrs. Juan G. Saldarriaga
 Mrs. Mary Anne Salmon
 Mr. Guido J. Salomone, Jr.
 Mrs. Fran Lizzo Salvi
 Mrs. Carol Jasen Sampson
 Mrs. Madeleine B. Sanders
 Dr. Theresa Sanders
 Ms. Desiana Sandjaja
 Mrs. Jane S. Sandoz
 Mr. and Mrs. Thomas Sanger
 Mrs. Janet Sargent
 Courtney-Anne Sarpy Fund of Greater
 New Orleans Foundation
 Ms. Antoinette A. Sarraille
 Satsuki-kai Group of Tokyo
 Sacred Heart School
 Mrs. Edgar B. Saunders
 Ms. Margaret E. Saunier
 Dr. Carroll Saussy and Mr. Frank Molony
 Mr. and Mrs. William B. Sawtell
 Mrs. Kathleen D. Sawyer
 Ms. Jennifer A. Scanlon
 Ms. Molly O. Schaaf
 Mr. and Mrs. William F. Schaeffer
 Ms. Sallie J. Schafer
 Ms. Elaine C. Schapker
 Mr. and Mrs. Frederick W. Scherrer

Ms. Dorothy Schmerbauch
 Mrs. Ana Maria Schmit
 Mrs. Juliana M. Schmitt
 Mrs. Gertrude E. Schneider
 Mr. and Mrs. Mark J. Schneider
 Mrs. Julie P. Schnuck
 Mrs. Dolores A. Schoeneck
 Mr. and Mrs. Daniel J. Schoenekase
 Judge and Mrs. Patrick M. Schott
 Mr. and Mrs. Joseph R. Schrick
 Mrs. Joan G. Schriener
 Mr. Phillip Schroeder
 Mr. and Mrs. Tobin A. Schropp
 Ms. Patricia Schroth
 Mr. Carl W. Schulte
 Mr. and Mrs. Robert M. Schulte
 Ms. Deborah C. Schulz
 Mrs. Kathleen A. Schumacher
 Mrs. Bernice D. Schwabacher
 Mrs. Clair C. Schwartz
 Mrs. Janet Musial Schwarze
 Mrs. Jacqueline Sciarillo
 Mrs. Laura Scobee
 Mr. and Mrs. German Scott
 Ms. Susan M. Scurich
 Dr. Nicole Seagriff
 Mrs. Barbara Mozino Seegul
 Mrs. Marizita T. Seher
 Anonymous
 Mr. and Mrs. John Seiber
 Mrs. Christiane O'Hara Seifring
 Ms. Marilyn Seiker
 Mr. and Mrs. Vincent Seiker
 Ms. Pauline M. Seitz
 Mrs. Brenda C. Seliga
 Ms. Eva M. Sereghy
 Mr. and Mrs. Frank E. Sessions, Jr.
 Ms. Joan M. Sextro
 Mr. Bartholomew A. Seymour, Jr.
 Mr. and Mrs. Robert L. Shafer
 Mrs. Teresa Lannan Shaffer
 Mr. and Mrs. James J. Shallow
 Ms. Carroll A. Shannon
 Mrs. Marie P. Shannon
 Mrs. Elaine McHugh Sharer
 Mrs. Helen T. Shea
 Ms. Madelon U. Sheedy
 Ms. Kathleen A. Sheehan
 Margaret Craig Sheehy
 Mr. and Mrs. Leo J. Sheridan, Jr.
 Ms. Mary Ann Sherman
 Dr. Dolores Shoback and
 Dr. John Imboden
 Jackie and Bruce Shreves
 Mrs. Julie Siderfin



Ruth Klein, a Sister of Charity, and Therese Chu, RSCJ



Sisters Beverley McNamara and Mildred "Petie" Peterkin



Madeline Thibeau, RSCJ

YEAR OF PRAYER COMMITTEE



In celebration of the Bicentennial of Philippine's mission to the new world, one resource is the international Year of Prayer, web-based reflections in three languages. The Year of Prayer Committee, (L to R): Sisters Kathleen Hughes, chair of the Bicentennial Committee, Carolyn Osiek, Clare Pratt, Frances Gimber, Kathleen Conan and Mrs. Katie Swanstrom.



Year of Prayer committee members preparing weekly web-based reflections with the goals of: binding the Sacred Heart family together across the globe, introducing Philippine to those who don't know her and deepening the connection for those who do, considering topics significant to her story, reflecting on "frontiers" then and now, and exploring her relevance for today and for the future of the Society's mission.



First Friday Reflections from the Society: an email prepared by an RSCJ, colleague or friend of the Society, with a reflection on the meaning of the Sacred Heart in our lives today. During the Bicentennial Year of Prayer (Nov. 18, 2017-Nov. 18, 2018) email reflections will be sent every Monday, beginning on November 20. The First Friday Reflections will be on hiatus during the Year of Prayer. Sign up to receive these reflections at www.rscj.org/connect.

- Mrs. Margaret A. Sifferlen
- Mrs. Carol Krumholz Simmons
- Mrs. Adele Simon
- Mrs. Etienne Schier Simon
- Mrs. Brenda B. Simpson
- Ms. Katherine R. Simpson
- Mrs. Isabel J. Singletary
- Mr. and Mrs. Michael J. Sinto
- Mrs. Edward G. Sippel
- Mr. and Mrs. Robert Slater
- Mrs. Judith L. Sliney
- Ms. Caroline A. Smith
- Col. (Ret) and Mrs. James J. Smith
- Gary and Evelyn Boudreaux Smith
- Dr. and Mrs. Harold F. Smith, Jr.
- Mr. and Mrs. Eugene Smith
- Mrs. Mary Jane B. Smith
- Dr. Mary Magnano Smith
- Mrs. Maureen Smyth Smith
- Mrs. John J. Smith
- Mr. William R. Smith
- Mr. Anthony M. Smyth
- Mr. Patrick Smyth
- Mr. and Mrs. Tom G. Smyth
- Mr. and Mrs. John A. Sobrato
- Mrs. Constance Solari
- Ms. Marie D. Somers
- Dr. Christine D. Sommer
- Mr. and Mrs. Gordon Sosso
- Mr. and Mrs. Gregory P. Sosso
- Mr. and Mrs. Lawrence A. Sosso
- Ms. Therese A. Soule
- Mrs. Mary Joan Sova
- Mrs. Mary Barat K. Sparks
- Ms. Kathleen Walsh Spencer
- Mrs. Jane Sperling
- Mrs. Ann Spieth
- Mrs. Tiffany K. Spinella
- Ms. Rachel Sroufe
- St. Ignatius College Preparatory
- French Club, San Francisco, CA
- Mrs. Allison N. St. John
- Patricia and Jack Stack
- Kathleen and Kevin Stagg
- Ms. Florence C. Stanley
- Mrs. Ruth M. Stanton
- Mrs. Kimberly B. Staten
- Mr. and Mrs. Harry W. Steele
- Ms. Margaret I. Steele
- Mrs. Mary Lou Steffens
- Dr. Jane Steinfelds
- Mrs. Aileen Stevenson
- Mr. and Mrs. Dave Stoeberl
- Mrs. Jacqueline Lepore Stokes
- Mrs. Mary Nelson Stokes
- Ms. Dolores Stone Kolf
- Ms. Julia Stone
- Mrs. Linda Stone
- Mrs. Jean D. Stout
- Dr. Sara E. Strattan
- Mrs. Susan Strazzella
- Mrs. Annabel Strife
- Ms. Dawn R. Stringfield
- Mrs. Constance O. Strong
- Mr. Brian Stuart
- Mr. and Mrs. William C. Stude, Jr.
- Mrs. Julie D. Stull
- Mr. and Mrs. Ralph A. Sturges, III
- Mrs. Pamela W. Styrsky
- Dr. Barbara Mary Sullivan
- Mrs. Katherine Sheehan Sullivan
- Dr. Michael E. Sullivan
- Ms. Patricia Ann Sullivan
- Dr. and Mrs. R. Lawrence Sullivan
- Mrs. Dolores A. Supper
- Mrs. Kathleen M. Sutherland
- Mrs. Eileen W. Sutula
- Mrs. Donald E. Swanson
- Mrs. Catherine C. Swanstrom
- Ms. Therese G. Sweeney
- Ms. Patricia H. Swenson
- Mr. Thomas F. Tachis
- Ms. Mary Taft-McPhee
- Mr. and Mrs. Patrick A. Talley, Jr.
- Ms. Therese W. Tamaro
- Mrs. Christine Tantisunthorn
- Ms. Elena Tao
- Ms. Mary Lou Targy
- Mrs. Joan Teague
- Anonymous
- Ms. Julie M. Telang
- Mrs. Linda Leuchtmann Tell
- Mrs. Sally L. Teppert McKendry
- Mrs. Lisa Terneus
- Mrs. Carolyn K. Teshima and
- Dr. Edwin Hon
- Mrs. Barbara A. Thach
- Ms. Sandra J. Theunick
- Ms. Margaret A. Thibodeaux
- Dr. Richard and Tippy Gary Thibodeau
- Reverend William Thiele
- Mrs. Ellen F. Thoma
- Ms. Ruth H. Thomas
- Mrs. Susan D. Thomas
- Mr. and Mrs. Robert E. Thomas
- Mr. Andrew Thompson
- Ms. Catherine M. Thompson
- Ms. Gloria A. Thompson
- Corky Treacy Thompson
- Ms. Patricia K. Thompson
- Ms. Tiffany Thompson
- Dr. Nancy L. Thomson

GREEN RIBBON DONOR CIRCLE, CONT.

Mr. Jules M. Thro
 Ms. Elizabeth Thul
 Mr. Charles W. Thurston
 Mrs. Mary Jean Belitz Tibbels
 Mrs. Gerald M. Tierney
 Mr. and Mrs. Martin J. Tierney
 Mr. and Mrs. Frank P. Tighe, Jr.
 Mrs. Frances Titterton
 Mr. and Mrs. Gerald C. Tobin
 Ann and Kevin Tollefson
 Mr. and Mrs. Peter B. Tompkins
 Mrs. Elizabeth W. Tooley
 Mrs. Elizabeth Garesché Torno
 Mrs. Elizabeth R. Torphy
 Anonymous
 Mr. and Mrs. John Torrey
 Mrs. Mary B. Trahan
 Ms. Madeline Trainor
 Mrs. Ann M. Trivisonno
 Ms. Jo Ann G. Trogdon
 Mrs. Betty Bova Troilo
 Mrs. Mary P. Trott
 Anonymous
 Mrs. Mary Kay Tucker
 Ms. Marcia M. Tufarolo
 Mrs. Audrey F. Tunney
 Mr. and Mrs. John A. Tweedy, Jr.
 Mrs. Shelley Tynan
 United Way, Orange County, CA
 Mrs. Lorraine I. Urban
 Mrs. Elizabeth L. Urner
 Dr. Helen O. Vajk
 The Valentino Family
 Mrs. Francesca C. Vallone
 Mrs. Shirley Valmore
 Ms. Agnes C. Van Antwerp
 Dr. Dacia Van Antwerp
 Mrs. Mary Martin Van Dersarl
 Elizabeth and Douglas Van Horn
 Ms. Elizabeth VanderVen
 Mrs. Mary W. Vanderwarker
 Mrs. Dana Vandover
 Mr. and Mrs. Gary P. Vannelli
 Mr. and Mrs. Richard Veed
 Mrs. Debbie Vespa-Schutz
 Ms. Judy M. Vetter
 Mr. and Mrs. Stafford J. Viator
 Mr. and Mrs. Peter Vieira
 Vietnam Veterans of America,
 Chapter 794
 Mrs. Mary K. Vimmerstedt
 Ms. Marjorie A. Vis
 Mr. J. Malcolm Visbal

Ms. Maria F. Vitagliano
 Ms. Lidia B. Vitello
 Mrs. Constance A. Vogelgesang
 Mr. and Mrs. David Walker
 Mrs. Bahati Kamunanwire Walker
 Mr. and Mrs. Robert P. Wall
 Ms. Eloise Yerger Wall
 Ms. Katherine D. Waller
 Ms. Margaret A. Wallingford
 Dr. and Mrs. John R. Walsh
 Mrs. Rita M. Walter
 Ms. Colleen R. Walton
 Ms. Martha Warren
 Captain Thomas Carroll Warren
 USN (ret)
 Mrs. Susan E. Wasilauskas
 Mrs. Marion M. Wasserman
 Mr. and Mrs. John M. Weatherby
 and Family
 Mrs. Mary Ann Weaver
 Mrs. Rosalie V. Weaver
 Mr. and Mrs. Richard D. Weber
 Mrs. Ninette P. Webster
 Ms. Melissa Weiksna and
 Dr. Jeffrey Caruso
 Mr. and Mrs. John W. Weiss
 Mrs. Patricia R. Wells
 Mr. and Mrs. William E. Welsh, Jr.
 Mr. and Mrs. John W. Wen
 Ms. Mary K. Wentker
 Mr. and Mrs. Charles J. Weschler
 Anonymous
 Mrs. Cynthia C. Whalen
 Ms. Susan Whalen
 Dr. Lisa M. Wheatley
 Ms. Erin R. Wheeler
 Susan Moran Whelan
 Ms. Caroline L. White
 Ms. Doloretta S. White
 Mrs. Mary L. White
 Mr. Richard M. Whitney, III
 Ms. Elizabeth Whitson
 Ms. Susan M. Widmayer, Ph.D.
 Paul and Anne Wichagen
 Mrs. Barbara K. Wiggin
 Mr. Charles Wiggins
 Mr. and Mrs. Barry F. Wiksten
 Mr. Nathan T. Wilburn
 Dr. Suzanne Dale Wilcox
 Mrs. Eloise W. Wilding
 Mr. and Mrs. Alvin T. Wilkins
 Ms. Frances F. Williams
 Mrs. John Williams
 Mrs. Nancy Laborde Williams
 Mrs. Patricia K. Willis

Ms. Vivian M. Wills
 Mrs. Marie C. Wilson
 Mary Ellen and Jim Wilson
 Mrs. Patricia B. Wilson
 Dr. and Mrs. Warren J. Wimmer
 Mrs. Francine T. Wimsatt
 Mary Elizabeth Winsor, JD
 Mrs. Karen A. Winter
 Mrs. Bridget Conole Withers
 Mrs. Dolores Wolff
 Ms. Angela Y. Wong
 Mrs. Tam Wong
 Mrs. Belinda Wong-Swanson
 Woodlands Academy of the Sacred Heart
 Mrs. Patricia T. Woodley
 Ms. Loretta A. Wooten
 Mr. and Mrs. Peter J. Wrenn
 Mr. and Mrs. Samuel L. Wright, Jr.
 Mr. and Mrs. Frederick Wrightson
 Anonymous
 Ms. Cynthia Yelland
 Ms. Assunta Young
 Ed and Tata Young
 Ms. Sylvia J. Young
 Ms. Rose Yunker
 Mrs. Ellen G. Zaccardelli
 Mr. Robert Zahm
 Ms. Alessandra Zaldivar-Giuffredi
 Ms. Nenita B. Zarilla
 Mrs. Kelly E. Zastrow
 Mr. Thomas Zenga
 Ms. Maria-Louise Zeydel
 Mr. Richard Zink
 Mrs. Mary Jacqueline Zuber
 Mrs. Elizabeth Neville ZurSchmiede

Dr. and Mrs. John O. Edmunds, Jr.
 Mrs. Kathryn S. Elkins
 Mrs. Catherine Eustis
 Mrs. Kathleen F. Garaudy
 Dr. and Mrs. David P. Hesse
 Mrs. Lisa Tompkins Holden
 Mrs. Patricia Del Hunter
 Mrs. Evelyn Katz
 Mrs. Margaret Kemmerly
 Mrs. Mary Kay Kurzweg
 Mrs. June Logan
 Ms. Patricia A. Mathes
 Mrs. Natalie M. Matthews
 Mrs. Stanley McDermott, Jr.
 Mr. Elbert F. McKinlay
 Mrs. Kathy Meunier
 Mrs. Sally O'Meallie
 Mrs. Constance Parker
 Mrs. Elisabeth A. Rareshide
 Mrs. Ruth V. Schmedtje *RIP*
 Mrs. Ana Maria Schmit
 Judge and Mrs. Patrick M. Schott
 Mrs. Linda Stone
 Reverend William Thiele
 Mr. and Mrs. Stafford J. Viator

Haiti

AASC de Latin America, Great Falls, VA
 Ms. Monica B. Armstrong and
 Mr. Donald J. Kapa
 Mrs. Ursula Brinkmann
 Ms. Nicole Christenson
 Mrs. Betty L. Dunn
 Ms. Elizabeth Hentschel
 Mrs. Mary A. Huffman
 Josephinum Academy of the Sacred Heart,
 Chicago, IL
 Kincoppal-Rose Bay School
 of the Sacred Heart, Sydney, AU
 Mrs. Linda G. MacKay
 Mr. and Mrs. Woods Martin
 Mrs. Blanche McGrath
 Ms. Virginia Meagher
 Mrs. Linda Perez
 Mrs. Gretchen Philippi
 Ms. Amy C. Richardson
 Sacred Heart Schools - Sheridan Road,
 Chicago, IL
 Satsuki-kai Group of Tokyo
 Sacred Heart School, Japan
 Mr. Phillip Schroeder
 Mrs. Ann Spieth
 Ms. Elizabeth Whitson

*Your gift makes a significant
 difference – both now and
 into the future; thank you!*

Sophie Barat House Donors

Mrs. Carolyn T. Abaunza
 Ms. Marguerite Adams and
 Mr. Thomas Foutz
 Mrs. Nancy Adams
 Mrs. Helen Barnett
 Mrs. Suzanne Bradley
 Mr. and Mrs. John J. Broders
 Mrs. Virginia P. Candler
 Mr. and Mrs. John N. Casbon
 Mrs. Patricia Ellis Corderman
 Mrs. Duane E. Couch
 Mr. and Mrs. Edward D. Dienes
 Deacon Dan Dorsey

Indonesia

Mrs. Elizabeth M. Fisher-York
Mr. and Mrs. Daniel E. Holmes
Anonymous
Mr. and Mrs. Philip M. Murphy
Cyril F. and Marie O'Neil Foundation

Realized Bequests

Barbara Finlay Donahue
Mary Virginia Donnelly
Juliana L. Ewald
Elvera L. Fusco
Margaret S. Hagerty
Marie J. Hartigan
Margaret M. Kostouros
Loretta Maguire
Kathleen Patricia McKenna
Cornelia P. O'Neil
Marie L. Owen
Margaret Crowley Phelan
Ruth V. Schmedtje
Mary Lou Sheibley

Foundations and Trusts

Anonymous
Considine Family Foundation
Garnetta Kramer Charitable
Foundation
Anonymous
Heimbinder Family Foundation
Jason Family Foundation
Macy's Foundation
Malcolm Cravens Foundation
Marge and Charles J. Schott
Foundation
Menard Family Foundation
Molloy Foundation Inc.
Mutual of America Foundation
Cyril F. and Marie O'Neil Foundation
Paul E. Kelly Foundation
Schiro Family Foundation
The Briggs-Fisher Foundation
The JPMorgan Chase Foundation
The Kutch Family Fund of the
Dallas Foundation
The Loyola Foundation, Inc.
The Marion and Addison Bartush
Fund
The Mikita Foundation
Von Bergen Trust

Matching Gift Organizations

Apple Matching Gifts Program
College Futures Foundation
Mutual of America Foundation

Gifts in Kind

Pamela J. Hayes, Head of School,
and school community - Sacred
Heart Greenwich (CT)
Kathleen E. Hegenbart
James J. Mahoney
Stephanie S. Martens
Moore Computing LLP
Ed and Tena Russ
Anthony J. Soukenik, Sandberg
Phoenix & von Gontard P.C.
Sumner One/Copying Concepts

In Honor of

In honor of Frances M. Anhut
Gwen L. Pike

In honor of James P. Arno
Dolores A. Supper

In honor of Jean Bautz, RSCJ
Jean S. Robinson

In honor of Angela Bayo, RSCJ
Eugenia and David Askren
Thomas D. Higgins
Nancy A. Kernan

Catherine Littlefield
Robert and Deirdre Littlefield
Carol Nardoza Wheeler
Charles Wiggins

In honor of Bridget Bears, RSCJ
Kathleen W. Spencer

In honor of Carol Bialock, RSCJ
Karen E. Emge
John and Penny McNeel

In honor of Beatrice Brennan, RSCJ,
now RIP
Jean S. Robinson

In honor of Judith Brown, RSCJ
Marjorie W. Burke
Phyllis O'Hara

In honor of Grace Butler, RSCJ
Schiro Family Foundation

In honor of Mary Cacchiotti
Sally Cacchiotti

In honor of Adele Caire, RSCJ
Kimberly J. Conway

In honor of Ann Caire, RSCJ
Ashley and Bryan Knopp

In honor of Annice Callahan, RSCJ
Laurie Loughlin
Joan G. Schott

In honor of Muriel Cameron, RSCJ
Walter C. Ernest

In honor of Carol Campbell, RSCJ
John and Penny McNeel
Mary Beth Moorhead
Tracy H. Perez

In honor of Margaret M. Canty, RSCJ
Virginia K. Antakli
William and Denise Bull
Mark, Christine and Lisabeth Kelly
James, Maree, Patricia and
Emily Mulvoy

In honor of Hilda Carey, RSCJ
Joy Hudecz
Elizabeth Neville ZurSchmiede

In honor of Eleanor Carr, RSCJ
Mary R. Ackerman
Mark and Kyle Finnegan
Mary C. Finnegan RIP
Wilfred A. Finnegan
Juliana F. Gilheany
Nancy C. Hardart

In honor of Katherine Cassidy, RSCJ
Linda Kline

In honor of Margaret Causey, RSCJ
Margaret A. Thibodaux

In honor of Rose Chen, RSCJ
Francis S. Chen

In honor of Raphaelle Cherry, RSCJ
Pamela J. Hayes

In honor of Maureen Chicoine, RSCJ
Dorina Bautista

In honor of Agnes Chimbayo, RSCJ
John and Penny McNeel

In honor of Lydia Cho, RSCJ
Seong B. Suh

In honor of City House Class of 1955
Patricia R. Reinkemeyer

In honor of Lillian Conaghan, RSCJ
Mary N. Saunders
Patricia K. Thompson
Ed and Tata Young

In honor of Kathleen Conan, RSCJ
Edward and Paula Conan
Marguerite A. Conan
Daniel and Marian C. Glauber

In honor of Irene Lawrence Conrady
Noël G. Murphy

*In honor of faculty and staff, Country Day
School of the Sacred Heart, Bryn Mawr, PA*
Kathy Green

In honor of Elizabeth H. Crane
C. Howard Crane

In honor of Emilie Crooks Noel
Louise Belt

In honor of Celine Curran
Elizabeth D. Moore

In honor of Martha Curry, RSCJ
Sara N. Bredemann

In honor of Barbara Dawson, RSCJ
Monica Armstrong and Donald Kapa
W.C. Coale Family
Carol P. Drake
Kathleen E. Hegenbart
Germaine K. LaBerge
Judith Michalek
Harriet E. Mullaney
Denton grandchildren
Dacia Van Antwerp

In honor of Frances de la Chapelle, RSCJ
Patti and John Cody
Schiro Family Foundation

In honor of Virginia Denneby, RSCJ
Martha A. Robbins

In honor of Madeleine S. Desloge, RSCJ
Taylor S. and Marian F. Desloge Fund
of the Greater Saint Louis Community
Foundation
Suzanne D. Weiss

In honor of Kathleen Dolan, RSCJ
Trish and Coby Ellingwood
Pamela J. Hayes

In honor of Rosemary Dowd, RSCJ
Kathleen O. Eglhoff
Louis Glunz
Kathleen D. Lubawski

In honor of Ruth Dowd, RSCJ
Mary A. Baralt
Michelle Randazza

In honor of Reverend Kenneth Doyle
Virginia M. Hamel

In honor of Celeste Michel Drain
Elizabeth G. Torno

In honor of Duchesne College, Omaha
Patricia Coats

CONTINUED ON PAGE 35

CHAPTER CALL 4: TO BE AND ACT AS ONE BODY



▲ In July, 60 pilgrims from around the world made a **two-day pilgrimage** from St. Louis/St. Charles to Philippine's beloved Potawatomi country in Kansas – St. Marys, Mound City, and Sugar Creek – where Philippine lived for one year and was named by the Native Americans, "The Woman Who Prays Always."

► **Staff of the Conference of Sacred Heart Education**
(L to R): Bill Hobbs, director of program planning; Sister Suzanne Cooke, head of the Conference of Sacred Heart Education; Claire Lorentzen, director of mission communications; Nadia Sadeghian Gonzalez, office manager at the Conference office in the Stuart Center, Washington, DC



► **Sophie's and Philippine's Ciborium** – During the closing Eucharist of the Spirituality Forum, a special gift was presented to the USC Province. In the name of the Province of Venezuela, Margot Bremer, RSCJ, gave Provincial Sheila Hammond, RSCJ, a ciborium that once belonged to Saint Madeleine Sophie Barat, who had given it to Saint Rose Philippine Duchesne to bring to the New World in 1818. The ciborium later traveled to Cuba and then to Venezuela. It has now returned home in celebration of the Bicentennial.



To revitalize our unity in diversity and to act as one Body, dynamic, interconnected, linked with other bodies, in the world and as Church, in order to share, collaborate, and be in solidarity among ourselves and with others.



▲ **Students of Woodlands Academy, Lake Forest, IL,** prepare for chapel service.



◀ **Associated Alumnae and Alumni of the Sacred Heart (AASH) board 2017-2019** – Back row, (L to R): Rhonda Meegan, Kathleen Feeney, Roselie Posselius, Andrea Ferris, Maggie Kaspura, Kate Sawyer. Front row (L to R): Colleen Curran, Jodie Thorne, president; Deborah Dunham, Linzee LaGrange



◀ **Province Associates of the Sacred Heart Committee** (L to R): Cathy Knapik (co-chair), Jane Steinfels (co-chair), Mary Kay Hunyady, RSCJ, Julie Siderfin, Kristi Laughlin, Peggy Gorman, and Lori Wilson

PROVINCIAL ASSEMBLY



▲ **John McClure** (sixth from right) was honored at the Provincial Assembly for his 38 years (1979-2017) of service to the mission of the Society of the Sacred Heart as board member and chair of the board at the Academy of the Sacred Heart, St. Charles, member of the Elder Care Task Force for the province, member of the Network Board of Directors, the National Development Board, the Province Investment Committee, chair of the Province Finance Committee, and all around volunteer, advisor and cherished friend of the Society. Provincial Sheila Hammond presented John, accompanied by his wife, Mary (7th from right), with a statue of Philippine Duchesne as a small way of thanking John his extraordinary commitment to the Society.



The RSCJ membership blessed our lay colleagues who attended the first three days of the Provincial Assembly.



Sculpture of Saint Philippine and child

Sculpture by Harry Weber



Marilyn McMorrow, RSCJ, introduces the Assembly speaker and fellow Georgetown University professor, Dr. Marcia Chatelein, whose presentation was entitled: *Confronting the Church's History of Slavery, From Silence to Recognition to Grace.*



Assembly Steering Committee (clockwise, L to R): Sisters Bridget Bearss, Reyna González, Imma De Stefanis (Chair), Meg Causey (Provincial Team), Mary Finlayson (Provincial Team), Sheila Smith, and lay facilitator Lorraine Ste-Marie. Not pictured: Irma Dillard, RSCJ.

IN HONOR OF, CONT.

In honor of Shannon & Sydney Dutton
Nancy D. Dutton

In honor of Maureen Elliott
Mary Maloney

In honor of Donna and Louis Finocchiaro
Mary K. Lawton

In honor of Elizabeth Fisher, RSCJ
Diana M. Greenwood

In honor of Joanne Fitzpatrick, RSCJ, now RIP

Jennifer E. Finlay
Janet and Larry Horacek
Betty Anne and Lee McAllister
Gloria A. Thompson

In honor of Mary Bridget Flaherty, RSCJ
June R. McKenna

In honor of Marie-Louise Flick, RSCJ
Mary Eileen F. Fitzgibbons

In honor of Mary Ann Flynn, RSCJ
Cathy Duane
Nancy and Thomas Lawton
Sharon Peterson
Janet M. Schwarze

In honor of Mary Ann Foy, RSCJ
Patricia and Kevin Cosgrove
John and Penny McNeel
Sharon Peterson
Mary Ann Roncker

In honor of Michele Francis
Marie C. Francis

In honor of Joan Gannon, RSCJ
Phyllis T. Jepsen
Mark McLaughlin
Rose Valley Partners

In honor of Judith Garson, RSCJ
Carol Nardoza Wheeler

In honor of Frances Gimber, RSCJ
Sarah A. Anderson

In honor of Marion E. Glennon
Helen T. Shea

In honor of Melanie Guste, RSCJ
William J. Guste
Mary Jane Phelan

In honor of Carol Haggarty, RSCJ, now RIP
Mary Kathryn Black
Carol Eggers and Brian Haynsworth
Margaret M. Kaspura

In honor of Sheila Hammond, RSCJ
Trish and Coby Ellingwood
Carolyn S. Henry
Joan S. Lanahan

In honor of Homer Harrison
Sally L. Teppert McKendry

In honor of Elizabeth Hartson, RSCJ
Mary Jane Phelan
Carroll Saussy and Frank Malony

In honor of Lucy Hayes, RSCJ
Janet and Larry Horacek
Lauren K. Mueller

In honor of Sally J. Hoban
Duchesne Council #2951 Knights of Columbus
Jean E. Quinnan

In honor of Kathleen Hughes, RSCJ
Catherine C. Swanstrom

In honor of Providence Ilisevich
Anonymous

In honor of Mary Louise Jenkins, RSCJ
Marie-Christine Hellin

In honor of Sharon Karam, RSCJ
Elizabeth Hentschel

In honor of Mildred Barbara Kearins, RSCJ, now RIP
Phyllis O'Hara

In honor of Bonnie Kearney, RSCJ
Helen B. Ryan

In honor of Maura Keleber, RSCJ
Carol Nardoza Wheeler

In honor of Irene Kelley
Joan P. Rossi

In honor of Juan T. King
Russell Willis

In honor of Nancy Koke, RSCJ
Sharon Peterson

In honor of Marin Grace Laffont
Annette T. Kaier

In honor of Anita Lapeyre, RSCJ
John and Penny McNeel

In honor of Lorraine Lawrence, RSCJ
Margaret S. Hagerty

In honor of Adelyn Leander
Anonymous

IN HONOR OF, CONT.

In honor of Justine Lyons, RSCJ

Teresa A. Devincenzi
Jean D. Stout

In honor of Joan Magnetti, RSCJ

Schiro Family Foundation

In honor of Claire Mahaney, RSCJ

Felicity McClenachan

In honor of Mary Mardel, RSCJ

Ruth L. Beering
Jan and Jim Buckley
Guy V. Burnett
Family of Dorothy Doyle McKannay
Teresa A. Devincenzi
Kathy Fortier
Helen T. Fung
Pamela J. Hayes
Janice H. Henrotin
Joan and Mark Innes
Maria L. Larrenaga
Brenda and Don MacLean
Jennifer Mardel
The Mazzucco Family
William H. Miller
Ann and Richard Raymond
Margaret Craig Sheehy
Anonymous

In honor of Maryville College, Class of 1959

Patricia R. Reinkemeyer

In honor of Susan Maxwell, RSCJ

Mary L. Fitzpatrick
Anonymous

In honor of Mary Margaret McDonnell, RSCJ

Andrea C. Balliette

In honor of Ann McGowan, RSCJ

Mary L. Fitzpatrick

In honor of Jane McKinlay, RSCJ

Carol C. Budds
Ruth Schmedtje, now RIP
Joan and Patrick Schott

In honor of Jorge Menocal

Maria M. Menocal

In honor of Margaret Mary Miller, RSCJ, now RIP

Mary Ellen B. Glaser
Valerie V. Swanson

In honor of Shirley Miller, RSCJ

Mary Dell Barkouras
Rosemary H. Gidionsen
Ann B. Hug
Ruth Ann Keene and Charlie Ehm
John and Penny McNeel
Jeanne and Claiborne Perrilliat
Patricia W. Rice
Jackie and Bruce Shreves
Carolyn and Jim Smith
Diane Taylor

In honor of Alice Mills, RSCJ, now RIP

Betty B. Michot

In honor of Nancy Morris, RSCJ

Mary Kathryn Black
Marilee Hearn
Janice H. Henrotin
Joan and Mark Innes
John and Penny McNeel
Michelle Lastreto O'Neal
Susan M. Scurich
Helen O. Vajk
Belinda Wong-Swanson

In honor of Theresa Moser, RSCJ

Ernest R. Moser

In honor of Juliet Mousseau, RSCJ

Anne Mousseau

In honor of Carolyn Mouton, RSCJ

Shirley B. Griffin
Betty B. Michot

In honor of Patricia Munch, RSCJ

Anonymous

In honor of Nancy Murphy, RSCJ

Martha L. Holmes

In honor of Dorothy A. Murray, RSCJ

Betty and George Buckland
Anne G. Murphy
Jean S. Russell

In honor of Josefina Navarrete de Fernandez

Dolores F. Kincaid

In honor of Gail O'Donnell, RSCJ

Laurie L. Cochran
Morgan and Sara Edwards
Bridget and Randall Mudge

In honor of Leontine O'Gorman, RSCJ

Sarah J. Avery
Josephine A. Caruso
Paula M. Duncan
Christiane B. Seifring
Charles Wiggins



Kevin Cullen, SJ, was the celebrant for the Assembly liturgy. He proudly wore the bicentennial vestment given to the province by Pamela J. Hayes, head of school, and the school community at Sacred Heart Greenwich. This beautiful vestment will be used for all bicentennial liturgies. The gold threaded images portray the life of Philippine in the New World.



During part of one Assembly liturgy, the congregation wrote prayers on ribbons, which were then waved with joy at the offertory.



IT team at Assembly: Jeff Daggett, IT specialist for the province; Irma Dilliard, RSCJ; and Terrell McRae, from Moore Computing

PROVINCIAL ASSEMBLY



Lisa Buscher, RSCJ, reads the summaries from the table conversations with RSCJ and lay collaborators.



Sisters Mary Jane Sullivan, Judy Garson and others visit during the Assembly.



Betsy Hartson, RSCJ



Sisters Renie Cullen and Yuriko Tezuka

In honor of Karen Olson, RSCJ
Schiro Family Foundation

In honor of Carolyn Osiek, RSCJ
Hwa Woo Koh
Mary E. Romson
Angela Y. Wong

In honor of our parents: McMorrow-Travers families
McMorrow Family

In honor of Marianne Palacios
Ruth McCann

In honor of Elizabeth Maloney Paolino
Virginia M. Baldelli

In honor of Katie Pasichuke
Anonymous

In honor of Margaret Phelan, RSCJ
Mark, Christine and Lisabeth Kelly

In honor of Clare Pratt, RSCJ
Mary L. Fitzpatrick
Adrienne and William Free
Joan and Mark Innes
Patricia and George Moriarty
Martha A. Robbins

In honor of the United States-Canada Provincial Team
Janet Anderson
Linda Behrens
Laurie Hoffman
Eliza C. Lynn
Shirley Miller, RSCJ
Lisa Terneus
Debbie Vespa-Schutz
Anne L. Wichagen

In honor of Rose M. Quilter, RSCJ
Mira and Andrzej Lechowicz
Virginia D. Manuel

In honor of Paula Rademacher
Carl W. Schulte

In honor of Irma Patricia Reiss, RSCJ
Dorothy M. King
Jane R. McAniff

In honor of Juana Resto, RSCJ
Antonia Mahoney

In honor of Barbara Rogers, RSCJ
William B. Picotte

In honor of Rosemary T. Roney, RSCJ
Maureen S. Cairns
Ellen G. Zaccardelli
Elizabeth Neville ZurSchmiede

In honor of Helen Rosenthal, RSCJ
John and Anita Rosenthal
Betty Bova Troilo

In honor of the Religious of the Sacred Heart
Patricia E. Allen
Sheila L. Berner
Dorsi Finnegan
J. Caroline Kelleher
Georgina M. Pardo
Agnes C. Van Antwerp
Elizabeth Van Horn

In honor of Religious of the Sacred Heart who were my great teachers
Victoria E. Schwarz

In honor of Religious of the Sacred Heart who taught at Barat College, Lake Forest, IL
Marcy F. Petrini

In honor of Religious of the Sacred Heart, Bloomfield Hills, MI
Alumnae/i of the Sacred Heart - Bloomfield Hills

In honor of Religious of the Sacred Heart, Duchesne Academy, Omaha, NE
Kathleen R. Moran

In honor of Religious of the Sacred Heart, Duchesne Academy of the Sacred Heart, Houston, TX
Phyllis O. Ashley
Catherine L. Fitch
Jane A. Sperling

In honor of the Religious of the Sacred Heart who taught at El Cajon in CA
Rosalind Hirst

In honor of the Religious of the Sacred Heart who live in Houston
Julie P. Burns

In honor of the Religious of the Sacred Heart who taught at Manhattanville College, Purchase, NY
Katherine D. Quigley

In honor of the Religious of the Sacred Heart at Oakwood, Atherton, CA
Janet and Larry Horacek
Margaret A. Taylor
Margaret A. Thibodaux

In honor of the Religious of the Sacred Heart who taught at Prince Street, Rochester, NY
Kathleen M. Sutherland

IN HONOR OF, CONT.

In honor of Religious of the Sacred Heart who taught at Sacred Heart Academy Cincinnati, OH

Mary E. Addison

In honor of the Religious of the Sacred Heart who taught at San Diego College for Women, San Diego, CA

Donna S. Widmer

In honor of the Religious of the Sacred Heart, Stuart Hall, Schools of the Sacred Heart, San Francisco, CA

Peter C. Robinson

In honor of the Religious of the Sacred Heart, Teresian House, Albany, NY

Marianne B. Mitchell

In honor of the Religious of the Sacred Heart, Villa Duchesne and Oak Hill School, St. Louis, MO

Bethany S. Curtis

In honor of Marianne Ruggeri, RSCJ

Patricia Rashid

In honor of Ann Ryan, RSCJ

Molly O. Schaaf

In honor of Mary P. Ryan, RSCJ

Alice A. Grayson
Janet and Larry Horacek
Sara J. Murphy

In honor of Oonah Ryan, RSCJ

Josephine A. Caruso
Kyla Ryan
Elizabeth Neville ZurSchmiede

In honor of Marielena Saldarriaga

Barbara C. Saldarriaga

In honor of Mary R. A. Schumacher, RSCJ

Mary Kathryn Black

In honor of Virginia Schumann, RSCJ, now RIP

Nancy-Jane Griffith
Deborah M. Lodge
Joanne S. McDermott
Rose P. McHale
Katherine S. Sullivan

In honor of Jacqueline Sciarrillo

Angele Rice

In honor of Patricia Shaffer, RSCJ

Suong Crawford

In honor of Elizabeth Shearman, RSCJ

Schiro Family Foundation

In honor of Sheridan Road Class of 1950

Helen M. Brennan

In honor of Ann Smith, RSCJ

John and Penny McNeel
Bahati Walker

In honor of Sarah Leigh Smith Spratt

Harold F. Smith

In honor of Sarah Stephens, RSCJ

Madeleine Reilly

In honor of Anne Sturges, RSCJ, now RIP

Associates of the Sacred Heart -
New Orleans
Josephine A. Caruso

In honor of Kathleen Sullivan, RSCJ

Suong Crawford
Patricia B. Johnson

In honor of Mary Jane Sullivan, RSCJ

Nancy-Jane Griffith

In honor of JoEllen Sumpter, RSCJ

Janet and Larry Horacek
Lauren K. Mueller

In honor of Ale Taboni

Belle Akers

In honor of Theresa Teshima, RSCJ

Carolyn K. Teshima

In honor of Edna Tierney, RSCJ

John, Elizabeth and Diane Weatherby

In honor of Stephany Veluz, RSCJ

Dorina Bautista

In honor of Esther Ann Whalen, RSCJ

Claire-Marie Hart
Josephine E. Maguire
Joanne S. McDermott
Rose P. McHale
Mark McLaughlin
Rose Valley Partners
Katherine S. Sullivan

In honor of Deborah Oakes Whitney

Richard M. Whitney, III

In honor of Marie-Louise Wolfington, RSCJ

Anonymous
Toni W. Curry

In honor of Emily Zabrowski

Anonymous



Watch for the next *Heart* magazine, dedicated to the Bicentennial.



The keynote speakers at the Spirituality Forum (L to R): Catherine Mooney, *Lives That Matter*; Gerardette Philips, RSCJ, *Crossing Religious Frontiers – Discover Anew the Interior Life*; Priscilla Solomon, CSJ, *All My Relations: Circle of Life*



RSCJ from many provinces around the world attended the Spirituality Forum. Pictured (L to R): are Sisters Maryvonne Duclaux (from the Belgium, France and Netherlands Province, also known as BFN), Maribel Carceller (from the Philippines Province) and Christiane Claus (BFN).



More than 300 attendees from 23 countries, including 148 RSCJ, participated in the Spirituality Forum.

ASSOCIATES LIVING IN MISSION



Associates from around the USC Province attended the Spirituality Forum held in St. Louis. They are pictured with RSCJ who are involved with the Associates groups.



Chicago Associates group – standing (L to R): Catherine Kestler, Michele Kruse, Jane Steinfels, Kathleen Edwards; seated (L to R): Helen Bruns Ryan, Jody Hanley Stawicki



Associates group in New Orleans – front row (L to R): Duane Couch, Jane McKinlay, RSCJ; standing back row (L to R): Catherine Kinabrew, Sylvia Young, John Kinabrew, Jeanie Perrilliat, Liz Ashley, Shelley Lawrence, RSCJ, Patty Mathes



St. Louis/St. Charles Associate group met with RSCJ for a discussion of individual calls to ministry, "It takes a village," led by Kathy McGrath, RSCJ.



Jan Dunn, RSCJ, and Associate Marilyn Lorenz

CLOSING OF VANCOUVER ALUM GROUP

♦ In Memory of

In memory of Kathleen S. Adams

Abigail E. Adams
Judith K. Adams
Robert and Patricia Adams
W. Terry Adams
Bill and Sherri Adams
Judy Ponath
Sandy and Dennis Ryan

In memory of Joan E. Aman

Alumnae/i of the Sacred Heart -
Rochester, NY

In memory of Delores W. Anderson

Jacqueline Hauer

In memory of Linda Labanca Armbruster

Robert J. Armbruster

In memory of Lucy Artman

Rosemary A. Fasl

In memory of Thais Ascanio, RSCJ

Sarah A. O'Keefe

In memory of Florence Ashe, RSCJ

Maureen D. McMahon

In memory of Joan T. Ashley

Katharine A. Cobb

In memory of Flavia Augustine, RSCJ

Eugene and Margit Augustine
Joan Liddell

In memory of John M. Bagley

Mary Maloney

In memory of Anne G. Baker

Shirley E. Cummings

In memory of Claude and Catherine Baker

Catherine B. Eardley-Murphy

In memory of George and Barbara Baldwin

Barbara and Peter Neroni

In memory of Theresa Banaszynski, RSCJ

Linda L. Gehring

In memory of Clara M. Bardenheier

Helen B. Williams

In memory of Michaelene M. Barrett

Kevin and Sally (O'Connell) Healy

In memory of Agnes Barry, RSCJ

Florence C. Stanley

In memory of Margaret A. Bartush

Anne B. Burke

In memory of Claire Basar, RSCJ

Paula S. Clauser

In memory of Marion Bascom, RSCJ

Nancy and Ed Hamilton
Francine T. Wimsatt

In memory of Matilde Batista RSCJ

Graciela Nearing

In memory of Catherine Baxter, RSCJ

Brendan J. Fogarty

In memory of Mr. and Mrs. Harry J. Bears

Judith A. Anderson

In memory of Mr. and Mrs. James Bears

Judith A. Anderson

In memory of Harriot Benoist, RSCJ

Jean S. Russell

In memory of Nancy Bidwill

Mary Maloney
Gwen L. Pike

In memory of Barbara Bireley, RSCJ

Barbara S. Larson

In memory of Georgianna Blaeser, RSCJ

Margrit L. Algeciras
Herlinda R. Belcher
Ursula Brinkmann
Judith F. Duffy
Margaret M. Liggett
Pamela W. Styrsky

In memory of Mary Blish, RSCJ

Joan G. Schott

In memory of Gloria Bodrov

Suzanne Barry

In memory of Patricia Bonn

Patricia Altenau

In memory of Aimée Bourneuf, RSCJ

Constance D. Coleman

In memory of Annette Bourret, RSCJ

Mary A. Giblin

In memory of Barbara Bowe, RSCJ

Nancy M. Buckman
Patricia B. Wilson

In memory of Jane Gaffney Bradley

Richard J. Gaffney

The Vancouver Point Grey Alumnae Association (1913-2017), which has met at St. George's Junior School semi-annually for nearly 40 years since the Convent of the Sacred Heart was purchased in 1979 by St. George's, officially closed its Chapter on May 27. Theresa Chu, RSCJ, traveled from Halifax to Vancouver to be the guest speaker. Alums from all over attended the celebration. Airlie Ogilvie has been a central figure in keeping the association going for so many years.



Maureen Elliott, class of 1967, and Joan Ripley, class of 1960



Theresa Chu, RSCJ, and Deirdre Lane Duggan, City House of Montreal class of 1949



Airlie Ogilvie, class of 1965, past president of Point Grey Alumnae Association

CHILDREN OF MARY



The Children of Mary gather in the Sister Mary Mardel Chapel at Broadway, San Francisco, for their monthly meetings. Back row (L to R): Caroline Smith, Betsy Marr, Virginia Murillo (moderator), and Brooke Bledsoe; front row (L to R): Penny Green, Mary Ashe, Marilee Hearn, and Barbara McGettigan.

In memory of Beatrice Brennan, RSCJ
 Michael R. Brennan
 Margaret M. Evans
 JM Mitchell Group, Inc.
 Ruth Petzold
 Carolyn L. Price
 Beatrice and Robert Wall

In memory of Madeleine D. Brennan
 Marie D. O'Brien

In memory of Elisabeth Brinkmann, RSCJ
 Ursula Brinkmann

In memory of Peggy Brown, RSCJ
 George C. Bryan
 Valerie Moore O'Keeffe

In memory of Margaret Burke, RSCJ
 Kathleen R. Corrigan
 Viola G. Latall
 Kathryn Mullaney
 Helen M. Penton

In memory of Orville F. Burkemper
 Warren and Bonnie Lee Wimmer

In memory of Lois K. Burnett
 Guy V. Burnett

In memory of Alice D. Burns
 Julie B. Doll

In memory of Mary Bush, RSCJ
 Edith J. Kurie

In memory of Emily Butler, RSCJ
 Kathleen K. Farley

In memory of Anne Byrne, RSCJ
 Laila and Peter Almeida
 Shelly L. Anello
 Contessa M. Bannon
 Children of Mary-New Orleans
 Lynne Neitzschman
 Poche' Construction Inc.
 The Regis School of the Sacred Heart
 Mary N. Saunders
 Dorothy Schmerbauch
 St. Ignatius College Preparatory
 French Club, San Francisco, CA
 Jennifer and Peter Tompkins
 Shelley Tynan

In memory of Thomas J. Byrne
 Warren and Bonnie Lee Wimmer

In memory of Judy Cagney, RSCJ
 Viola G. Latall



St. Louis/St. Charles Children of Mary (standing) renew their act of consecration at the Feast of the Sacred Heart, Villa Duchesne and Oak Hill School chapel, St. Louis, MO.

CONTINUED ON PAGE 44

BICENTENNIAL EVENTS



Procession for the Feast of the Sacred Heart at Villa Duchesne and Oak Hill School chapel introduced the new banner of St. Rose Philippine Duchesne to open the Bicentennial activities for the USC province.

Saint Rose Philippine Duchesne
1818-2018
200 Years
CROSSING FRONTIERS



Philippine's room "under the stairs" at her shrine in Florissant, overflowing with prayer intentions



Kathy McGrath, RSCJ, leads the pilgrims in prayer in St. Marys, KS, by the common grave of some of the earliest RSCJ on the frontier: Mother Lucille Mathevon, died 1876; Mother O'Connor, 1864; Sister Amiotte, 1857; Madame Regan, 1868; Sister Layton, 1876; Mother Boyle, 1877; and Mother Deagan, 1872.



THE PHILIPPINE STORY WILL CONTINUE TO UNFOLD AND OTHER FRONTIERS WILL BE CROSSED



Provincial Sheila Hammond, RSCJ; Joe Edwards, founder of the Walk of Fame; and Maureen Glavin, RSCJ, head of the Academy, St. Charles, greet the crowd gathered to watch the unveiling of St. Philippine Duchesne's star on the Walk of Fame in St. Louis.



"Pope Francis" and "St. Philippine Duchesne" watch over the attendees at the Society's Spirituality Forum. Follow Flat Philippine at Facebook.com/vdoh1929.



Kathleen Hughes, RSCJ, chair of the Bicentennial committee



Students and faculty from Duchesne Academy, Omaha, NE, on their trip to the Dominican Republic. The Institute for Latin American Concern (founded by Creighton University) takes students to the Dominican Republic to do service and learn about life in a developing country. Each year 12 young women from Duchesne spend the fall semester raising money to do a service project in one of the *campos*. The spring semester is spent preparing for the trip: building community, learning about the history and current issues in the Dominican Republic, and preparing spiritually. Preparation also includes an overnight retreat. Students then spend two weeks in the Dominican Republic learning about the country firsthand and completing their service project.



During a pilgrimage in July 2017 to significant St. Philippine and RSCJ sites in Kansas, the group visited the St. Philippine Park outside of Mound City. The park is on the site of Sugar Creek, where St. Philippine lived with the Potawatomi. Pictured (L to R): Barbara Blecka, retired religion teacher at 91st Street, New York, NY; Monica (Bodo) Esquivel, RSCJ, Central Team, former Provincial of Mexico; and Maryvonne Duclaux, RSCJ, from France, Archivist, BFN Province.

Upcoming Bicentennial events begin on November 20 with an online year of prayer.

A full calendar of events is posted at rscj.org/bicentennial2018.

IN MEMORY OF, CONT.

- In memory of Margaret B. Cain*
Caroline C. Detwiler
- In memory of James G. Caire*
Katherine B. Caire
- In memory of Audrey Cairns*
Maureen S. Cairns
- In memory of Emmanuela V. Camilleri*
Helen T. Fung
- In memory of Constance Campbell, RSCJ*
Joan Liddell
- In memory of Susan Campbell, RSCJ*
Elizabeth J. Myers-Buhite
- In memory of Mr. and Mrs. Carmen A. Carfagano*
Regina C. McCairns
- In memory of Marie Louise Carmody, RSCJ*
Arthur J. Conley
C. Erin H. Hennessey
Pauline M. Seitz
- In memory of Nicholas T. Carson*
Anonymous
- In memory of Georgia Bader Cassin Bradley*
Carolyn C. Driscoll
- In memory of Lolly C. Castro*
Brenda C. Seliga
- In memory of Susan S. Chung*
Young C. Chung
- In memory of Mary T. Clark, RSCJ*
Beverly M. Boyd
Diane and Richard Cummins
- In memory of Marie-Louise Clarkson, RSCJ*
Margaret Hochreiter
- In memory of Margaret Mary Coakley, RSCJ*
Joan E. Mendelson
- In memory of Joan Lueder Coffey*
Edward C. Coffey
- In memory of Patti-Anne Coldicutt*
Gwen L. Pike
- In memory of Catherine Collins, RSCJ*
Claire M. McGowan
Susan S. Murphy
- In memory of Jane Collins*
Maureen Collins

- In memory of Marguerite O. Conan*
Edward and Paula Conan
Marguerite A. Conan
Daniel and Marian C. Glauber
- In memory of Margherita Condell, RSCJ*
Peter L. Bacsik
- In memory of Helen Condon, RSCJ*
Joan M. Binder
- In memory of Patricia Young Connor*
Patricia A. Connor
- In memory of Ann M. Conroy, RSCJ*
Tara V. Beering
Teresa A. Devincenzi
Ben and Frank Dinger
Marion E. Glennon
Ayleen James
Katharine H. Kernan
Elizabeth B. Leckie
Cathleen and John McGoldrick
Ann and Richard Raymond
Constance H. Solari
Marcia Syufy
- In memory of Dorothy M. Cooke*
Mike and Sheri Angelides
Judith F. Anthon
Andrea and Charles Bull
Cindy Burch
Jim and Margaret Crowe
George and Kathy Crump
Michael and Allison Dietz
Helen A. Gagen
Andrea, Wes, and Hadley Gardner
Amy E. Garrett
Gray, Ritter & Graham, P.C.
Plancorp, LLC
Kathleen M. Potts
Patricia J. Rice
Dan and Maureen Schoenekase
Angie and Dave Stoeberl
Vietnam Veterans of America,
Chapter 794
- In memory of Madeleine Sophie Cooney, RSCJ*
Viola G. Latall
- In memory of Eileen Cording*
Dorothy M. Ross
- In memory of Helen Costello, RSCJ*
Angela M. Robbiano
- In memory of Kathleen Cox, RSCJ*
Schiro Family Foundation

CONTINUED ON PAGE 48



Jane Cannon, long time alumnae director at the Academy, St. Charles, wrote *Two Hundred Years, A Legacy of Love and Learning*, a history of the Academy, in preparation for the Bicentennial. Maryville University underwrote the cost of the publication. Pictured (L to R): Jeanne O'Fallon; Erin Verry, alumni director at Maryville; Jane; Susan Dempf, new head at the Academy; and Maureen Glavin, RSCJ, retiring head. Erin presented Jane with a check for \$25,000.



Susan Maxwell, RSCJ, signs a copy of her new book, *Times Change*, which describes the birth of the Network of Sacred Heart Schools and its first 25 years. It highlights the directives of Vatican II and the importance of the General Chapters of 1967 and 1970 of the Society of the Sacred Heart.



Carolyn Osiek, RSCJ (provincial archivist for the Society of the Sacred Heart, United States - Canada Province) brings to life the compelling story of Saint Rose Philippine Duchesne who paved the way for Catholic education west of the Mississippi, as told in this short book on her life.



All RSCJ who have served at the Academy, St. Charles, were invited to be honorary chairs at the annual Chemin de Fer at the Academy of the Sacred Heart, St. Charles. Front row seated: Sisters Mary Pat Rives, Sally Rude, Sheila Hammond, Margaret Caire, Emma Fernandez, Maria Luisa Cotto, Frances Gimber, Margaret Munch. Back row standing: Sisters Kathy McGrath, Kathleen Hughes, Margie Strom, Betty Nakato, Donna Collins, Maureen Glavin, Mary Lou Gavan, Connie Dryden, Carolyn Osiek, Juliet Mousseau, Sally Hoban, Hiroko Okui, Elaine Abels, Mary Jo McFayden, Muriel Cameron.

Mary "Be" Mardel, RSCJ, (center) was presented with the Woman of Conscience Award at the AASH Conference in San Francisco by Maureen Aggeler (left) and Mary Forsyth, president of AASH (right). Superior General Barbara Dawson, RSCJ, also received the Woman of Conscience award.



Michael Baber, head of school,
Villa Duchesne and Oak Hill
School, St. Louis, MO



Nat Wilburn, head of school at Sacred Heart Schools, Sheridan Road (Chicago, IL), joins students on the newly renovated playground



Meg Steele, head of school, Woodlands Academy of the Sacred Heart, Lake Forest, IL



Dr. Yvonne Adler, head of school at
Schools of the Sacred Heart, Grand
Coteau, LA



Richard Dioli, director of Sacred Heart Schools, Atherton, CA, welcomed hundreds of guests to the campus to celebrate Sister Nancy Morris' 90th birthday.



Two heads of school retired at the end of the 2016-2017 school year: Maureen Glavin, RSCJ, head of the Academy of the Sacred Heart, St. Charles, for 13 years, and Michael Dougherty, head of Josephinum Academy of the Sacred Heart, Chicago, IL, for 10 years.



USC PROVINCIAL STAFF



Provincial team members (L to R): Provincial Sheila Hammond, RSCJ; team members Sisters Mary Finlayson, Margaret Causey, Anne-Marie Conn and Diana Wall



Provincial Archives staff (L to R): Michael Pera, Sisters Lyn Osiek and Mary Lou Gavan



Finance office staff (L to R): Ron Bruns, Debbie Vespa-Schutz, Kim Pecoraro, Laurie Hoffman and Janet Anderson



Mission advancement staff (L to R): Eliza Lynn, Anne Wiehagen and Shirley Miller, RSCJ



Carol Pfitzinger, director of the Shrine of Philippine Duchesne in St. Charles, MO



Lisa Terneus, administrative assistant to the provincial team, and Adifa Qorri, receptionist



Linda Behrens, director of Bicentennial communications



Jeff Daggett, IT specialist



Danielle Dunleavy, director of finance and business affairs, Canada

Carol Haggarty, RSCJ, RIP assistant to the provincial



Dot Schmerbauch, who worked for the USC Province for 32 years until her retirement in 2015, returns to the provincial office several days a week as a volunteer.

THANK YOU FOR YOUR GIFT

IN MEMORY OF, CONT.

In memory of Malin Craig, RSCJ
Margaret Craig Sheehy

In memory of Margaret B. Craig
Helen C. Lynch

In memory of Agatha Cronin, RSCJ
Elizabeth A. Herguth

In memory of Maureen Cronin, RSCJ
Gael Beresford-Raven

In memory of Katherine Kelley Crumlish
Thomas K. Crumlish

In memory of Charles T. Cullen
Sallie J. Schafer

In memory of Ethel Curren
Mary H. Derbes

In memory of Michele Daschbach Fast
Laura D. Pitchford

In memory of Mary E. Davison
Margery M. Huemmler

In memory of Julie De Falco
Maria F. Vitagliano

In memory of Ed and Emma De Sano
Kathy and Jack Mahoney

*In memory of my deceased classmates -
City House, 1963*
Pamela M. Gaynor

In memory of Jane D. DeCory
Alumnae/i of the Sacred Heart -
Rochester

In memory of Shelagh Deegan, RSCJ
Sean Finn
Gay and Mark Maloney

In memory of Caroline Desautniers, RSCJ
Susan A. Hays

In memory of Kathleen McAuliffe Desloge
Suzanne D. Weiss

In memory of Patricia K. DiIorio
Margot M. Howard

In memory of Monika Pyka Dillon
J. Brian Dillon

In memory of Agnes J. Doelger
Marie D. O'Brien

In memory of Agnita S. Doelger
Marie D. O'Brien

In memory of Nora H. Doherty
Gregg W. Doherty

In memory of Constance I. Donius
Margaret S. Crane

In memory of Lucie P. Donovan
Hope D. Bowles

In memory of Therese Downey, RSCJ
George C. Bryan
Carol Chen
Mary R. Marquart
Deborah and Jerry Reinstatler

In memory of Catherine M. Doyle
Anne M. Doyle

In memory of Jane A. Drenman
Roma A. Kent

In memory of Patricia Driscoll White
Alumnae/i of the Sacred Heart -
Rochester, NY

In memory of Agnes Ducey, RSCJ
Joanna D. Lawton

In memory of Priscilla A. Durkin
Janet Sargent

*In memory of Adolph and
Leocadia Dybczak*
Marie D. Somers

In memory of Santiago R. Echeveste
Sheri Adelson
Mr. and Mrs. Charles Carrington
Cynthia Darling
My Dang Do
Sandy and Terri Echeveste
Gene and Karen Griffin
Barbara L. Mundt
Mark E. Ryan
German and Ana Scott
Woodlands Academy of the
Sacred Heart

In memory of Mary P. Edwards
Margery M. Huemmler

In memory of Marie Egan
Jo Anne G. Ahern

In memory of Constance S. Elliott
Mary Ellen O'Connor

In memory of Elmburst, Class of 1964
Nancy-Jane Griffith

In memory of William H. Evans, Jr.
John and Patricia Evans
Nancy H. Evans

Peter and Fumio Evans
Timothy M. Evans

In memory of Anne Farraber Davis
Ann Carter Cane

In memory of Helen McDonough Farrell
Helen F. Ryan

In memory of Beatrice Fernakees, RSCJ
Sheila C. Labrecque

In memory of Mary Carr Finnegan

Cary S. Burns
Ginny and Jim Carroll
Joan and Lloyd Connors
Mark and Kyle Finnegan
Wilfred A. Finnegan
Jean and Ronald Gailun
Andy Huntington
Jeanne Carr Lamb
Christine E. Lattin
Jean and Gregg Nabhan
Joan C. Nestler
Rosemary Rotelli
Michael and Marilyn Sinto
Brian Stuart
Charles W. Thurston
Audrey F. Tunney
Robert Zahm

In memory of Helen Jean Fitzpatrick
W.P. Atkins Family
Jean Fitzpatrick
Marion V. McKay

In memory of Joanne Fitzpatrick, RSCJ
Michaela M. Belatti
Nancy and Charlie Clisbee
Jean M. Furay
Karen and Cal German
Julie L. Haller
Rose Marie Jezak
John and Betty Kaplan
Geraldine M. Lawhon
Sue S. Mooney
Kathleen R. Moran
Connie L. Rasmussen
Bob and Charlene Slater

*In memory of John and Jean McMahon
Fitzpatrick*
Jean Fitzpatrick

In memory of Lois Flick
Mary Eileen F. Fitzgibbons

In memory of Katherine Flynn
Mary Sue B. Nash

In memory of Anne Ford
Rose P. McHale

In memory of Helen E. Fox, RSCJ
Mary Ellen Fox
K. Marie Gumucio

In memory of Rosa M. Franquiz
Anonymous

In memory of Albert P. Frechette
Rosemary C. Lavelle

In memory of Sally Furay, RSCJ
Brenda and Richard Gomez
Marjorie A. Hughes
Mary H. Lindsay
Norma P. Little

In memory of Eileen K. Gabel
Mary G. Costello

In memory of M. Joanne Gainer
Eveleen K. Lopez

In memory of Renata D. Gallagher
Jane Johnston
Valentino Family

In memory of Marie Gannon
John Mosby Russell

In memory of Felisa Garcia, RSCJ
Susan A. Hays

In memory of Anne Gaffney Gardner
Richard J. Gaffney

In memory of Emil Georgi
Diane S. Catenaci

In memory of Raymond J. Gewinner
Angela C. Gewinner
Raymond J. Gewinner

In memory of Robert Glockner
Julie and Richard Allen
William and Geraldine Beasley
Judy and Hank Blommer
Shirley G. Connolly
Sue Crawford
John and Pat Del Favero
Michael and Josephine Demeter
Mary T. Folsom
Sandra P. Gaubert
Constance W. Hawkins
Nancy Jorgensen
Lydia and Van Maroevich
Jeanne F. Quinlan
Mindy and Jesse Rogers
Antoinette A. Sarraille
Victoria Sullivan

Margaret Taylor and Floyd Gonella Helen Texido Family Martha Warren	<i>In memory of Kathie Hartson</i> Joanie Walet Hartson	<i>In memory of Dorothy Hughes</i> Judith H. Janowiak	<i>In memory of Meghan La Rocca</i> Maureen E. Kelly
<i>In memory of Muffy Good, RSCJ</i> Lorna M. Knazek	<i>In memory of Maurice J. Hartson III</i> Joanie Walet Hartson	<i>In memory of Gabrielle Husson, RSCJ</i> Rose P. McHale	<i>In memory of Mary and Paul LaFalce</i> Sheila LaFalce
<i>In memory of Edwin Grant</i> Judith A. Dow-Grant	<i>In memory of Nancy Hartson</i> Joanie Walet Hartson	<i>In memory of Katherine Murphy Johnston</i> Mary M. Van Dersarl	<i>In memory of Bill Larkin</i> Marie Rose Bengle
<i>In memory of Miriam Gray</i> Ann G. Miller	<i>In memory of Nancy A. Heffernan</i> Ellen S. Miller	<i>In memory of Kirtee Kapoor</i> Joan R. Eagleson	<i>In memory of Mary Jane Connors Leckinger</i> William J. Fay
<i>In memory of Marguerite Green, RSCJ</i> Viola G. Latall Betty Anne McAllister	<i>In memory of John and Helen Heflin</i> Mary E. Ketchum	<i>In memory of Mildred Barbara Kearins, RSCJ</i> Marian G. Costello	<i>In memory of John S. Lizzo</i> Frances L. Salvi
<i>In memory of Mary Lou Guillory, RSCJ</i> Maryanne Davis	<i>In memory of Mary Elizabeth Heneghan</i> Ella Heneghan	<i>In memory of Bridget Keenan</i> Harry W. Steele	<i>In memory of Mr. and Mrs. Samuel Lizzo</i> Frances L. Salvi
<i>In memory of Robert E. Hackman</i> Richard L. Chenault	<i>In memory of Anne M. Henkels</i> Katherine D. Quigley	<i>In memory of Karen A. Kelly</i> Margaret M. Kelly	<i>In memory of Nancy Scherrer Logsdon</i> Thomas A. Logsdon
<i>In memory of Carol Haggarty, RSCJ</i> Mary Kathryn Black Joan and Jim Eggers Linda L. Gehring Mary Rose Ghislandi Beth and Larry Lenke Mary and Jack Monson Dennis and Jeanne Burke O'Fallon Judith and Thomas Sanger William B. Sawtell Dorothy Schmerbauch Joan G. Schrinner Carolyn and Jim Smith Anthony M. Smyth Patrick Smyth Sara Kay Thompson	<i>In memory of Catherine Henry, RSCJ</i> Anne V. McAlister Anonymous	<i>In memory of Mary Alice Kelly, RSCJ</i> Elizabeth A. Herguth	<i>In memory of Lorraine Loomis</i> Elaine P. Healy
<i>In memory of Marian Haggarty</i> Joan and Jim Eggers	<i>In memory of Mary Henry, RSCJ</i> Anne V. McAlister Anonymous	<i>In memory of Mary Ann Bremner Kennedy</i> Susan L. Kennedy Sullivan	<i>In memory of Barbara Lowery</i> Linda L. Tell
<i>In memory of Clare Haggarty</i> Joan and Jim Eggers	<i>In memory of Howard F. Herning</i> Timothy J. Kay Law Offices of Snell & Wilmer	<i>In memory of Anne Marie Gilles Kennelly</i> Kenneth F. Higman John Mak	<i>In memory of Angela Lubert, RSCJ</i> Joanne and Peter Bauman Bertha A. Lubert
<i>In memory of Georgette Hamill</i> Victoria Adams	<i>In memory of Ruth Tooley Hesterberg</i> Frances L. McDonald	<i>In memory of Kevin</i> Geraldine C. Koesters	<i>In memory of John Lubert</i> Joanne and Peter Bauman
<i>In memory of Helen Hammack, RSCJ</i> Louise L. Wen	<i>In memory of Ellen Hoffman, RSCJ</i> Tara V. Beering Teresa A. Devincenzi Helen T. Fung Joan and Mark Innes Mazzucco Family Ann and Richard Raymond	<i>In memory of Joan Kirby, RSCJ</i> Maria Asteinza Betty and George Buckland Annette and Peter Corbin Patty and Timothy Fagin Joan E. Mendelson Carol Nardoza Wheeler	<i>In memory of Jean McGowan MacDonald</i> Patricia C. Ellingwood
<i>In memory of Katharine T. Hargrove, RSCJ</i> Judith R. McCarren	<i>In memory of Margaret Mary Hoffman, RSCJ</i> Peter and Gail Backus Judy Hoffman Ronald and Kathleen Hoffman Julie M. Telang	<i>In memory of Anna Christina Kloepffel</i> Patricia K. Willis	<i>In memory of Anne Madden, RSCJ</i> Linda R. Murphy
<i>In memory of Cyril and Virginia Harrison</i> Virginia Harrison	<i>In memory of Mary T. Hoffmann</i> William R. Smith	<i>In memory of Patricia C. Kolbe</i> Patricia C. Post	<i>In memory of Rita Maginn, RSCJ</i> Marie E. O'Ryan
<i>In memory of Mary Lou Harter</i> Margaret W. Baxendale Paula and Philip Boeckmann June O. Hiles Missouri Athletic Club	<i>In memory of Dorothy Holmes, RSCJ</i> Susan K. Nunnally Schiro Family Foundation	<i>In memory of Anna Christina Kloepffel</i> Patricia K. Willis	<i>In memory of Catherine Maguire, RSCJ</i> Deborah J. Donovan
	<i>In memory of Nancy Perotti Holmes</i> William C. Holmes	<i>In memory of Gretchen A. Kobls</i> Adria Brandt	<i>In memory of Loretta Maguire</i> Kevin and Sally O'Connell Healy Katherine Healy Jacaruso Mary Jane O'Connell Haley
	<i>In memory of Susan Hornauer</i> Joan Hornauer	<i>In memory of Claire T. Kondolf, RSCJ</i> Helen C. Kondolf	<i>In memory of Anne Madden, RSCJ</i> Linda R. Murphy
	<i>In memory of Claire P. R. Horton</i> John Mosby Russell	<i>In memory of Lucille Kraemer, RSCJ</i> Evelyn K. Francuz	<i>In memory of Rita Maginn, RSCJ</i> Marie E. O'Ryan
		<i>In memory of Eileen Krakora</i> Susan J. Krakora	<i>In memory of Sarah Mahar, RSCJ</i> Shawn O'Donnell
		<i>In memory of Theresa Kreuzer, RSCJ</i> Samuel L. Wright	<i>In memory of Charline B. Maloney</i> Virginia M. Baldelli
		<i>In memory of Katherine M. Kunz</i> Karen Burkhardt	<i>In memory of Alice J. Maloy</i> Elizabeth E. Golden
			<i>In memory of Gertrude Manaban, RSCJ</i> Marcia and Dick Hall
			<i>In memory of Kathryn Manaban, RSCJ</i> Marcia and Dick Hall

IN MEMORY OF, CONT.

In memory of Marina V. Mapa, RSCJ
Dolores M. Keefe
Virgilia F. Mapa

In memory of Anna Mae Marheineke, RSCJ
Melanie Goudelocke
Christine D. Sommer
Ann T. Spieth
Kimberly B. Staten

In memory of Genevieve D. Martin
Genevieve C. Martin

In memory of Carol L. Masterson
Mary M. Germain

*In memory of Mr. and Mrs.
Joseph A. Mauillo, III*
Diana M. Greenwood

In memory of Angela McAghon, RSCJ
Andrew McAghon

In memory of Leo J. McCabe
Anne F. McCabe

In memory of Virginia McCarthy RSCJ
Marcelle E. Amory

In memory of Eileen McDonnell, RSCJ
Philip Kelly

In memory of Mathilde McDuffie, RSCJ
Madeline and Tom Burke
Leah DeJoseph
Deborah and Jerry Reinstatler

In memory of Clare McGowan RSCJ
Eileen W. Sutula

In memory of Marjorie McGrath, RSCJ
Anonymous

In memory of Marie McHugh, RSCJ
Virginia M. Bispo

In memory of Lynn B. McKannay
Anne Harrington

In memory of Mary Catherine McKay, RSCJ
Kathryn R. Hutcheson
Phyllis O'Hara

In memory of Jane K. McKinley, RSCJ
Ann S. Jordan
Jane A. Layman
Marianne McDonald

In memory of Cora McLaughlin, RSCJ
Beatrice S. Dinger

In memory of Marjorie L. McLaughlin
G. Robert McLaughlin

In memory of Catherine McMabon, RSCJ
Jean Fitzpatrick
Linda J. Landucci
Rosemary M. Laughlin
Marion V. McKay & W.P. Adkins family
Kathleen A. Schumacher

In memory of Colleen A. McMabon
Madeleine Ortman Begley
Jean Fitzpatrick
David Harrington
Ed and Carol Heafey
Tom and Joan Heafey
Gary and Rosemary Jacobs
Linda Landucci McMabon and family
Mike and Colleen Langenfeld
Joan and John Matoole
Marion V. McKay & W.P. Atkins family
Jackie, Joe and Tim McLaren
Kate Monen-Pieper
Michael Much
John R. Neary
Marilyn C. Ryan
Nancy L. Ryan
Gordon and Lisa Sosso
Greg and Kelly Sosso
Larry and Catherine Sosso

In memory of Mary McMabon, RSCJ
Jean Fitzpatrick
Linda Landucci McMabon and family
Elizabeth J. Myers-Buhite

In memory of Virginia McMonagle, RSCJ
Sarita and Brent Eastman

In memory of Helen McMonigle
Joann K. Morey

In memory of Donald R. McMorrow, Sr.
McMorrow Family

In memory of Faine McMullen, RSCJ
Elizabeth L. Collins
Colette K. McCarty
Anonymous

In memory of Jan McNabb, RSCJ
Marjorie M. Julian

In memory of Mary Gray McNally, RSCJ
Diana G. Brotherton-Ware
Berta N. Kapoor

In memory of Priscilla Meier, RSCJ
Christine M. Meier
Mary Ann M. Oderman

In memory of Leonor Mejia, RSCJ
Marina G. McKenzie

In memory of Kathleen W. Mellon
Dorothy M. Ross

In memory of Alicia C. Meyers
Aimee J. Perkins

In memory of Julia Micciche, RSCJ
Anne M. Kelly

In memory of Jane Miller
Lorraine D. Borel
Kathleen Owen

In memory of Joseph M. Miller
Marcia L. Miller

In memory of Margaret Mary Miller, RSCJ
Mary Eileen F. Fitzgibbons
Linda L. Gehring
Margaret A. Miller
Mary Lynn Miller
Anthony and Marianne Nichols
Ann O'Shea
Irma A. Rozynski
Marilyn Seiker

In memory of Alice Mills, RSCJ
Melanie M. Ryals

In memory of Barbara Mitchell, RSCJ
Jane D. DeCory, now RIP

In memory of Nancy H. Moriarty
Katherine D. Quigley

In memory of Louise J. Morse
Barbara A. Cagney

In memory of Odeide Mouton, RSCJ
Calvin B. Cotner

Louise Cousin
Sharon D. Murphy

In memory of Margaret Ann Mullen
Mary Helen and David Ish

In memory of Margaret K. Mullin
Margaret M. Evans

In memory of Mary Munch, RSCJ
George C. Bryan

In memory of James K. Murphy
Noël G. Murphy

In memory of Paul D. Naish
Elizabeth M. Fisher-York

In memory of Ann, Lisa and Mary Lou Natoli
Donna J. Spillane

In memory of Tina Neureither
Vita N. McCall

In memory of Anne E. Nevins-Montiero
Judith A. Reach Condit

In memory of Marie Norton-Weir, RSCJ
Elizabeth L. Griesmer

In memory of Margaret A. O'Brien, RSCJ
Margaret S. McCarthy

In memory of Deirdre O'Callaghan
Kevin O'Callaghan

In memory of Mary O'Callaghan, RSCJ
Eleanor W. Malone
Frances N. Phipps

In memory of Jean and Bill O'Connell
Constance O. Strong

In memory of Catherine O'Connor
Rebecca Alpert
Madeline and Tom Burke
Amy Friedlander
Alison Gerig
Gloria and Richard Greenough
Carol V. Haggerty
Kathryn D. Hannon
Christine M. Hedges
Mary Hedges and J. Brown
Brian Kracyla
"Loudmouth Gang"
Laurie Neff
Lynn Osband
Leah Pillsbury
Prabhakaran Family
Reardon Family
Julia Stone
Mary Taft-McPhee
Tiffany Thompson
Elizabeth Thul
Elizabeth VanderVen

In memory of Richard M. Olson
Doug and Stephanie Mousseau

In memory of Virginia O'Meara, RSCJ
John and Patricia Evans
Nancy H. Evans
Peter and Fumio Evans
Martha K. Smith

In memory of Ana Belen Ospina, RSCJ
Philip Kelly

In memory of Loretta O'Brien Oswald
Sara Oswald

In memory of Mary K. Oswald, RSCJ
Elizabeth L. Griesmer
M. Linda H. O'Connor

- In memory of Dorothy Owen, RSCJ*
Christine Tantisunthorn
- In memory of Catherine Owens, RSCJ*
Liliane C. Hart
Mary Johansen
- In memory of Harriet Ann Padberg, RSCJ*
Patricia K. Thompson
- In memory of Sister Carmela Parisi, RSCJ*
Shirley Owen
- In memory of Gertrude Patch, RSCJ*
Anonymous
Mary R. Corcoran
Barbara B. Gee
Barbara McDonald
- In memory of Rosemary Peeler*
Martha C. Awdziejewicz
- In memory of Clay Pentland*
Sally Costigan Coleman
- In memory of Patricia Phelan, RSCJ*
Janice H. Henrotin
Guido J. Salomone
- In memory of Judith A. Philbin*
Mary A. McCarthy
- In memory of Walter G. Phillips*
Richard L. Chenault
- In memory of Mary Pignatelli,
Newton College*
885
- In memory of Lorette Piper, RSCJ*
Schiro Family Foundation
- In memory of Helena F. Potts*
Mary Elizabeth Kelley
- In memory of Sally S. Prince*
Patricia Prince
- In memory of Caroline Putnam, RSCJ*
Mary P. Chatfield
- In memory of Katharine T. Quinn*
Sarah R. Weiss
- In memory of Mary Ranney, RSCJ*
Eleanor G. Dyett
Patricia Schroth
- In memory of Margaret Corcoran Re*
Peter and Faith Corcoran
Mary Ann Re
Julie D. Stull
- In memory of Rosamond T. Reardon*
John P. Reardon
- In memory of Katherine M. Reid and
Patricia Anne Reid*
Camilla Reid Kuhn Quinn
- In memory of Margaret Reilly, RSCJ*
Mary Ann Kerwin
- In memory of Margaret B. Riley*
Patricia Rashid
- In memory of Elizabeth L. Rochfort*
Suzanne M. Erskine
Mizie Rochfort Finke
Mary Ann Kocurek
- In memory of Mary Veronica Rogers*
Ann Lammers-Lasek
- In memory of Roberta Roblefs*
Walter E. Johnson
- In memory of Catherine F. Rollings*
Mary Elizabeth Burke
- In memory of Alyce and Duane Rosenkjar*
Anonymous
- In memory of Aimée Rossi, RSCJ*
Joan O'Rourke
- In memory of Olga Rossi, RSCJ*
Joan O'Rourke
- In memory of Stanley Rozynski*
Irma A. Rozynski
- In memory of all Religious of the
Sacred Heart*
Liz Byas
Patsy and Woods Martin
Mary C. Ringel
Agnes C. Van Antwerp
- In memory of Religious of the Sacred Heart
who taught at Barat College, Lake Forest, IL*
Marcy F. Petrini
- In memory of Religious of the Sacred Heart
who taught at Eden Hall, Philadelphia, PA*
Andrea C. Balliette, Class of 1951
Eloise W. Wilding
- In memory of Religious of the Sacred Heart,
Grand Coteau, LA*
Betty B. Michot
- In memory of Religious of the Sacred Heart,
my teachers at Grosse Pointe, MI, 1947-53*
Patricia M. Gallacher
- In memory of Religious of the Sacred Heart
who taught at San Francisco College for
Women/Lone Mountain, CA*
Susan P. Burns
- In memory of Rita Ryan, RSCJ*
Mary Eileen F. Fitzgibbons
- In memory of Claire Saizan, RSCJ*
Shirley B. Griffin
Mary Henkel and Patrick Larkin
Betty B. Michot
- In memory of Nancy Salisbury, RSCJ*
Patricia F. Garffer
Kathleen D. Sawyer
- In memory of Jane Wynne Saul, RSCJ*
Janet Courtland
- In memory of Celeste Dillon Schaefer*
Sue and Kirk Dryden
- In memory of Eileen Adams Schmidt*
Mary Katherine Adams
- In memory of Agnes Schmit, RSCJ*
Lauren B. Plumer
- In memory of Marie Louise Schroen, RSCJ*
Jean S. Russell
- In memory of Virginia Schumann, RSCJ*
Alumnae/i of the Sacred Heart -
Elmhurst
Bristol-Myers Squibb Foundation
Virginia M. Hamel
Helen and Jim Shallow
- In memory of Lillian L. Schwarz-Corriea*
Victoria E. Schwarz
- In memory of Louis Sciarillo, Jr.*
Christine Tantisunthorn
- In memory of Catherine Seiker, RSCJ*
Claire V. Giambalvo
Vincent and Theresa Seiker
- In memory of Josephine Seitz, RSCJ*
Marcia and Dick Hall
- In memory of Margaret Seitz, RSCJ*
Margrit L. Algeciras
Karen P. Brewster
Pamela W. Styrsky
- In memory of Mary Sessions, RSCJ*
Frank and Susan Sessions
- In memory of Marguerite Seymour, RSCJ*
Bartholomew A. Seymour
- In memory of Margaret Shea, RSCJ*
Margaret S. McCarthy
- In memory of Rosemary Sheehan, RSCJ*
Trish and Coby Ellingwood
Pamela J. Hayes
- Barbara Johansen
Irene McInerney
Kathleen and Kevin Stagg
Mimi and Billy Welsh
- In memory of Gloria Mittong Simms*
Joan M. Rees
- In memory of Rose Sinnott, RSCJ*
Virginia F. Landblom
- In memory of Victoria Siu, RSCJ*
Moyra A. Loeffler
- In memory of Carmen Smith, RSCJ*
Melanie Goudelocke
Betty J. Henry
- In memory of Eleanor U. Smith*
Catherine S. Felleman
- In memory of Glen H. Smith*
Richard L. Chenault
- In memory of Martha Burns Smith*
Martha S. Lepore
- In memory of Mary Hoffmann Smith*
William R. Smith
- In memory of Pat and Ted Smyth*
Maureen A. Smith
- In memory of Christina Sorenson*
Sarah E. Allegaert
- In memory of Streeter and
Dorothy Speakman*
Susan S. Hatta
- In memory of Ruth Stanley, RSCJ*
Virginia B. Coudert
- In memory of Rosemary Statt, RSCJ*
Ellen S. Miller
Mary E. Romson
Thomas R. Statt
- In memory of Nello Stefani*
Rina Stefani
- In memory of Patricia Steppe, RSCJ*
Christine D. Sommer
- In memory of Sheilagh Stevick*
Anonymous
- In memory of Christine Stokes*
Jacqueline L. Stokes
- In memory of Ronald and Gertrude Stoney*
Susan S. Morris

IN MEMORY OF, CONT.

In memory of Anne Sturges, RSCJ

Harriet A. Garzero
Ralph O'Connor
Mary N. Saunders

In memory of Kathryn Sullivan, RSCJ

Michael E. Sullivan

In memory of Alice L. Sweet

Honora L. Koster

In memory of Rita D. Tachis

Thomas F. Tachis

In memory of Mary Talmadge, RSCJ

Catherine D. Enns

In memory of Genevieve Thunder

Barbara A. Barnes

In memory of Mary Elizabeth Tobin, RSCJ

Wendy and Matt Marino
Cindy and Scott Olson
Gerry and Laura Tobin

In memory of Dean Traynor, RSCJ

Anonymous
Corinne E. McClintic

In memory of Barbara McCulloch Visbal

J. Malcolm Visbal

In memory of Elizabeth Walsh, RSCJ

Melinda K. Blade
Charles and Maureen Pecht King
Perla Myers
Rowena Naidl
Allison N. St. John

In memory of Joan Young Warren

Thomas C. Warren

In memory of Marvin Wasserman

Marion M. Wasserman

In memory of Christine Webber, RSCJ

Mary B. Bocckino

In memory of Marie M. Whalen

Judith Conley
Susan Whalen

In memory of Mary C. Wheeler, RSCJ

Margaret C. Miniclier

In memory of Elizabeth White, RSCJ

Eileen A. Hochstein-Altschul
Jean F. Mooney

In memory of Gregory LaBonte White

Mary L. White

In memory of Kathleen Whitfield, RSCJ

Mark, Christine and Lisabeth Kelly

In memory of Margaret Williams, RSCJ

Doris Donnelly

In memory of Hilda Wills

Consuelo N. Buenaver

In memory of Edward and Jean Winsor

Mary Elizabeth Winsor

In memory of Josephine Witt

Karen L. German

In memory of Ralph Mark Woodley

Patricia T. Woodley

In memory of Virginia C. Zink

Richard Zink

*To our faithful and generous
families and friends –
Thank you!*

This report acknowledges all donations received by the Society of the Sacred Heart, United States–Canada Province, from September 1, 2016 to August 31, 2017. Every effort has been made to compile an accurate list. If your name does not appear or is listed incorrectly, please accept our sincere apologies and contact the Mission Advancement Office with your corrections: Shirley Miller, RSCJ, smiller@rscj.org or Eliza Lynn, elynn@rscj.org.

Bicentennial Committee Members

Kathleen Hughes, RSCJ, Chair; Hilda Adams, Linda Behrens, Donna Collins, RSCJ; Jan Dunn, RSCJ; Charla Dziedzic, Maureen Glavin, RSCJ; Sheila Hammond, RSCJ; Bill Hobbs, Catherine Howard, Maggie Kaspura, Michael Pera, Pam Schaeffer, Donna Heckler and Matthew Anita MacDonald, SSJ.

Provincial Assembly: Hearts Transformed by Fire Steering Committee

Sister Imma De Stefanis, Chair; Sisters Bridget Bearss, Meg Causey, Irma Dillard, Mary Finlayson, Reyna Gonzalez, and Sheila Smith. Facilitator: Lorraine Ste-Marie.

*Spirituality Forum: Philippine Duchesne: Celebrating her life and legacy,
Celebrating 200 years of crossing frontiers –1818-2018 Steering Committee*

Sister Kathleen McGrath, Chair; Sisters Mary Charlotte Chandler, Diane Roche, Margie Strom, and Matthew Anita MacDonald, SSJ; Julie Siderfin, Rhonda Meegan, Sally Hoban and associate Laura Haroian

PHOTO CREDITS

Linda Behrens*

Laura Beeson
Ron Bruns
Edward Chen
Michael Creedon
Imma DeStefanis, RSCJ
Irma Dillard, RSCJ
Joan Gannon, RSCJ
Fran Glowinski, OSF
Reyna Gonzalez, RSCJ
Nadia Sadeghian Gonzalez
Michael Hong

Kim King, RSCJ

Jerry Naunheim**

Shirley Miller, RSCJ
Michael Pera
Diane Roche, RSCJ
Beth Schneider
Sheila Smith, RSCJ
Mary Jane Sullivan, RSCJ
Anne Wachter, RSCJ
Fiona Walsh
Design: Peggy Nehmen, N-KCreative.com

** Linda has 36 years' experience in communications, public relations and marketing. In 2015, she began her own company, LK Photography +, offering photography, writing and graphic design services. As of September 18th, Linda was named director of communications for the USC Province.*

*** Jerry has been image-making professionally since 1983 when he joined the St. Louis Post-Dispatch as a staff photographer. During his tenure there, he began freelancing for a variety of local, national and international clients and in 2007 decided to focus all of his energy on his freelance photography business. This is the second time Jerry has traveled throughout the province to capture the spirit and essence of the Sacred Heart family. www.jerrynaunheim.com*





The Old St. Ferdinand Shrine Board of Directors (L to R): Doug Riser, president; Geri Debo, secretary-treasurer; Pam Huff, Father Tom Keller, vice president; Sisters Frances Gimber and Margaret Munch; Jeff Grenard, Michael Dobbs, Mary Elizabeth Dorsey, and Ed Keil



Juliet Mousseau, RSCJ, associate professor of church history at Aquinas Institute, St. Louis, MO



Betty Nakato, RSCJ, from the Uganda-Kenya Province is receiving her degree in educational leadership and management, courtesy of Maryville University.



Deanna Rose Von Barga, RSCJ



Anne Wachter, RSCJ, head of Sacred Heart School of Halifax, Nova Scotia



Irma Dillard, RSCJ, introduced Superior General (in absentia) Barbara Dawson, RSCJ, for the Woman of Conscience Award at the AASH conference in San Francisco.



In March, the Conference of Sacred Heart Education organized a mini-conference for the communications staff members from the 24 Network Schools. With the coming of the Bicentennial, it was a wonderful time to discuss the opportunities and challenges of communicating our mission on digital platforms. There were presentations from the Conference, Network Schools, and province members and staff.

Fundraising Income (unaudited figures)

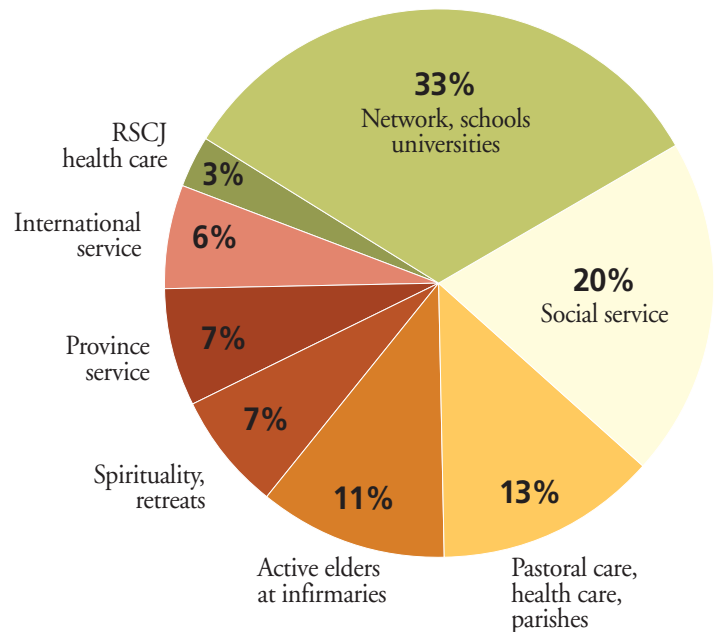


Financial Facts 2016-2017

Annual USC Province budget	\$19,222,863
Annual budget allocation for retirement centers.....	\$4,470,631
Average per-person cost for RSCJ in retirement homes.....	\$66,726
Income from RSCJ salaries.....	\$4,338,704
Average per-person retirement income from Social Security.....	\$7,860
Average per-person retirement income from TIAA/CREF	\$12,431

RSCJ Ministries in the United States-Canada Province

Percentages of RSCJ who are involved in each area of service





Josephinum Academy of the Sacred Heart, Chicago, IL, science teacher Olivia Johnson whose t-shirt has the motto of the school: #girlswithoutlimits.



Boys from Regis School of the Sacred Heart, Houston, TX, reach out to those in need following Hurricane Harvey.



Little Hearts capture our hearts!



Donna Collins, RSCJ, meets with a student from Villa Duchesne and Oak Hill School in St. Louis, MO.



A student finds a quiet place to study at the Academy of the Sacred Heart, the Rosary, New Orleans, LA.



STUDENT LEADERS CROSSING FRONTIERS

By Claire Lorentzen, director of mission communications, Conference of Sacred Heart Schools

Thirty-six student leaders from 15 Sacred Heart Schools gathered in St. Louis, MO, in July to participate in the Society-sponsored **Spirituality Forum as part of the Bicentennial celebration**. The students crossed their own new frontiers and discovered how to navigate differences in their school communities in ways that emulate the spirit of St. Philippine.

Along with those attending the adult programming, **students engaged in intercultural and interfaith dialogue training based on the Essentials of Dialogue**, a resource provided by the Tony Blair Faith Foundation. Through exploring their identities, influences, beliefs and values and developing the skills needed to navigate differences peacefully, students equipped themselves with a tool kit to facilitate difficult conversations in their school communities. They were inspired to cross their own unique frontiers – to lead empathetic conversations that lead to deeper understanding and meaningful relationships rather than division and conflict.

Students have since shared that they came home not only eager to share their new capacities as leaders but also with an enlightened sense of how to express Philippine's spirituality in their own lives and leadership. The Network of Schools plans to continue to work with the student leaders to develop further opportunities for dialogue across the 24 schools.



Claire Lorentzen is the director of mission communications for the Conference of Sacred Heart Education. She is a graduate of Sacred Heart Greenwich ('06) which she attended for middle and high school. Previously, she has worked for the Tony Blair Faith Foundation and Sojourners magazine. Claire has also spent time living with and photographing RSCJ in Uganda and Kenya. She holds a BA in public policy from Stanford University and a masters of arts in religion from Yale Divinity School.



Society of the Sacred Heart™
United States – Canada

Revealing God's love in the heart of the world

The Society of the Sacred Heart of Jesus is an international community of women in the Catholic Church, founded in 1800 by Saint Madeleine Sophie Barat. Sharing her vision and mission, we are convinced of the centrality of prayer and contemplation in our lives. We, the Religious of the Sacred Heart, are committed to discovering and making God's love visible in the heart of the world through the service of education. Conscious that what we do, we do together, and remembering a tradition marked by a love for young people and missionary spirit, the Religious of the Sacred Heart carry out this service of education:

- ♥ *especially in the work of teaching and formation*
- ♥ *in other activities for human development and the promotion of justice*
- ♥ *in pastoral work and guidance in the faith*

— *Constitutions of the Society of the Sacred Heart, 1982*

Thank You!

www.rscj.org • 314-652-1500

 [facebook.com/SocietyoftheSacredHeart](https://www.facebook.com/SocietyoftheSacredHeart)

 [@RSCJUSC](https://twitter.com/RSCJUSC)

 [_societyofthesacredheart_](https://www.instagram.com/_societyofthesacredheart_)

 [pinterest.com/rscj](https://www.pinterest.com/rscj)



4120 Forest Park Avenue
St. Louis, MO 63108-2809



Society of the Sacred Heart™
United States – Canada

Nonprofit Org.
U.S. Postage
PAID
St. Louis, MO
Permit No. 5806



“LET US GO FORWARD IN HOPE TO LIVE OUR MISSION,
AS MEN AND WOMEN OF FIRE AND SOWERS OF SEEDS OF NEW LIFE.”

—Superior General Barbara Dawson, RSCJ

Go Paperless: rscj.org/connect